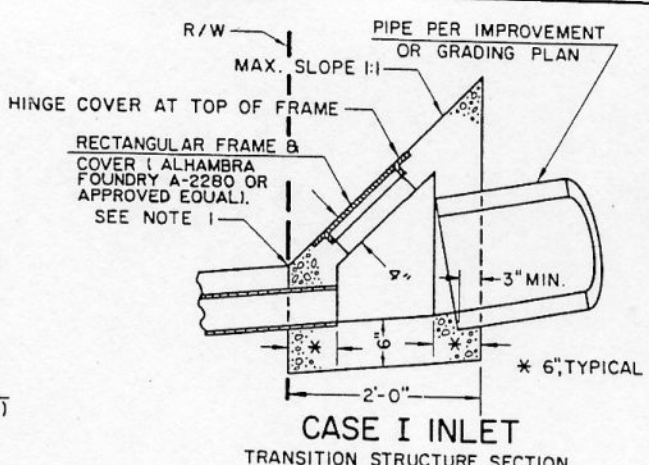
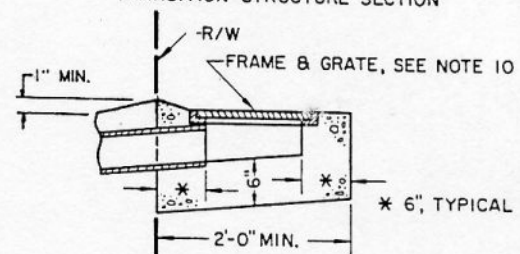


PLAN



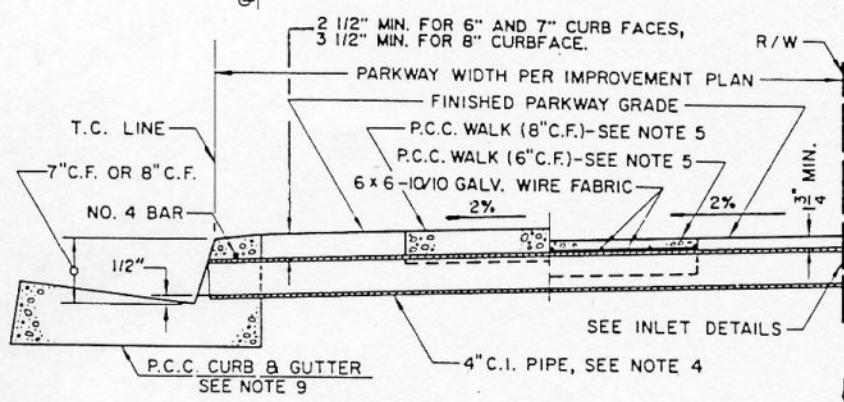
CASE I INLET

TRANSITION STRUCTURE SECTION

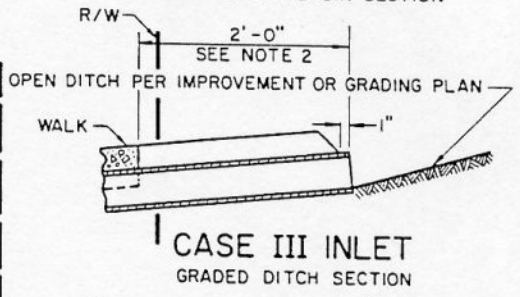


CASE II INLET

DROP INLET CATCH BASIN SECTION

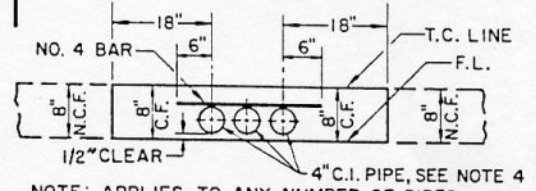


SECTION A-A



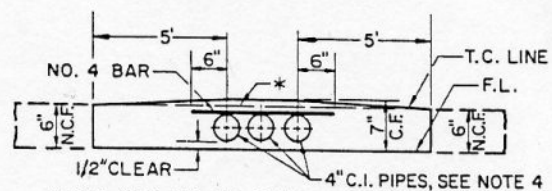
CASE III INLET

GRADED DITCH SECTION



CURB PROFILE

8" NORMAL CURB FACE



CURB PROFILE

7" & 6" NORMAL CURB FACE

- NOTES:
1. IF THE TOE OF SLOPE IS ALLOWED WITHIN THE R/W, INLET CASE I BEGINS AT THE TOE RATHER THAN THE R/W LINE.
  2. FOR OPEN DITCH APPROACH (CASE INLET III), THE EXTENSION BEYOND THE R/W LINE IS NOT REQUIRED WHEN BACK OF WALK IS MORE THAN 2' FROM THE R/W LINE, HOWEVER, PIPE SHALL EXTEND TO R/W LINE IN ALL CASES.
  3. TOP OF INLET STRUCTURE (CASE I AND II) TO BE FLUSH WITH ADJACENT SURFACE WHERE PRACTICABLE.
  4. POLYVINYL CHLORIDE (PVC) PIPE OF EQUIVALENT AREA MAY BE SUBSTITUTED AT THE CONTRACTORS OPTION OR SPECIFIED ON PLAN FOR CASE I & II INLETS. HOWEVER, PVC PIPE MUST BE ENCASED IN CONCRETE TO A MINIMUM THICKNESS OF 3".
  5. CONSTRUCT P.C.C. WALK WHEN SPECIFIED ON PLAN. THE CONTRACT PRICE PAID FOR P.C.C. WALK ITEM SHALL INCLUDE WALK CONSTRUCTED IN CONJUNCTION WITH PARKWAY CULVERT.
  6. "N" EQUALS NUMBER OF PIPES (MAXIMUM OF THREE) AS SPECIFIED ON PLAN.
  7. INLET CASE TO BE SPECIFIED ON IMPROVEMENT OR GRADING PLAN.
  8. ANGLE "O". EQUALS "O" UNLESS OTHERWISE SPECIFIED.
  9. TYPE, DIMENSIONS AND ELEVATIONS OF P.C.C. CURB AND GUTTER PER IMPROVEMENT PLAN.
  10. UNLESS OTHERWISE SPECIFIED, FRAME AND GRATE FOR INLET CASE II SHALL BE ALHAMBRA FOUNDRY 14" X 24" TYPE A-2422 (GALVANIZED) OR EQUAL.
  11. ALL WORK SHALL BE CONSTRUCTED IN ACCORDANCE WITH THE LATEST ADOPTED STANDARD SPECIFICATIONS FOR PUBLIC WORKS CONSTRUCTION.
  12. FOR RECTANGULAR ADAPTORS SEE SHEET 2.

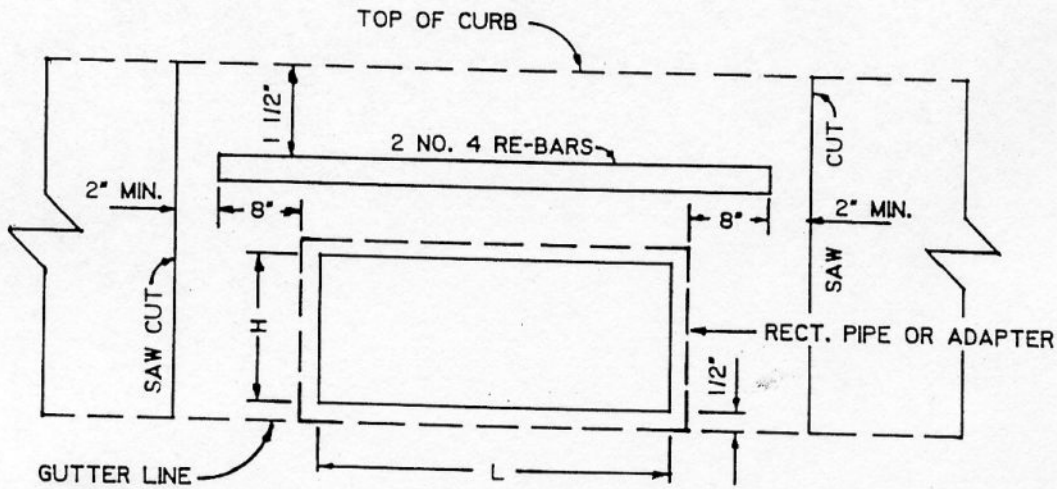
CITY OF BURBANK - PUBLIC WORKS DEPARTMENT

CURB DRAIN NO. 1

STANDARD PLAN

APPROVED BY: *Eric Langman* 6-1-92  
Public Works Director Date

BS-107  
SHEET 1 OF 2



RECTANGULAR ADAPTER SIZES

PIPE SIZE (DIAMETER)	H	L	MINIMUM CURBFACE
4"	3"	5"	7"
6"	3"	12 1/2"	7"
8"	4"	14"	7 1/2"
8"	3"	17"	7"

NOTES:

1. IF CURBFACE IS LESS THAN 6 1/2" A SPECIAL DESIGN SHALL BE SUBMITTED FOR APPROVAL
2. CURB SHALL BE CUT BY A CONCRETE SAW TO A MINIMUM DEPTH OF 2" AND REMOVED TO FULL DEPTH OF CURB.
3. DRAIN PIPE FROM PROPERTY LINE TO RECTANGULAR ADAPTER MUST BE CAST IRON AND HAVE A MINIMUM DIAMETER OF 4".
4. SIDEWALK SHALL BE CUT WITH A CONCRETE SAW TO A MINIMUM DEPTH OF 2" AND ONLY ALONG SCORE LINES.
5. A 4" CAST IRON PIPE MAY BE USED WITHOUT AN ADAPTER WHEN CURBFACE IS OVER 7 1/4".

**CITY OF BURBANK - PUBLIC WORKS DEPARTMENT**

**CURB DRAIN NO. 1**

STANDARD PLAN

BS-107

SHEET 2 OF 2

APPROVED BY:

*Eric Sampson*  
Public Works Director

6-1-92

Date

REV	BY	DATE