

CITY OF BURBANK
PUBLIC WORKS DEPARTMENT
CENTERLINE MONUMENT REQUIREMENTS

IN ACCORDANCE WITH SECTION 8771 OF CALIFORNIA STATE BUSINESS AND PROFESSIONS CODE, SURVEY CONTROL MONUMENTS MUST BE LOCATED AND REFERENCED (FOR LATER REPLACEMENT) PRIOR TO THE START OF ANY RELEVANT CONSTRUCTION WORK. FOLLOWING CONSTRUCTION WORK, ALL MONUMENTS MUST BE REPLACED WITH A CORNER RECORD FILED WITH THE COUNTY SURVEYOR. FURTHER, PER SUBSECTION 2-9.3 OF THE 1997 EDITION OF STANDARD SPECIFICATIONS, THE TIE NOTES SUBMITTED TO THE CITY OF BURBANK PUBLIC WORKS DEPARTMENT SHALL INCLUDE THE FOLLOWING INFORMATION:

1. Description of four (4) tie points at each intersection so that the two (2) tie lines cross at the centerline monument and form a near 90° angle. All distances from tie points to centerline monument are to be shown.

If a new tie point is needed, it should be set in a location that has a reasonable probability of being undisturbed and permanent with location denoted in the tie notes (e.g., in curb). Said tie point should be established by drilling a vertical hole 3/8" diameter by 1½" deep into concrete at the chosen location, filling said hole with lead and incorporating a surveyor's tag with tack in the center of the lead.

2. Each tie point shall be identified by a chiseled "T" behind it.

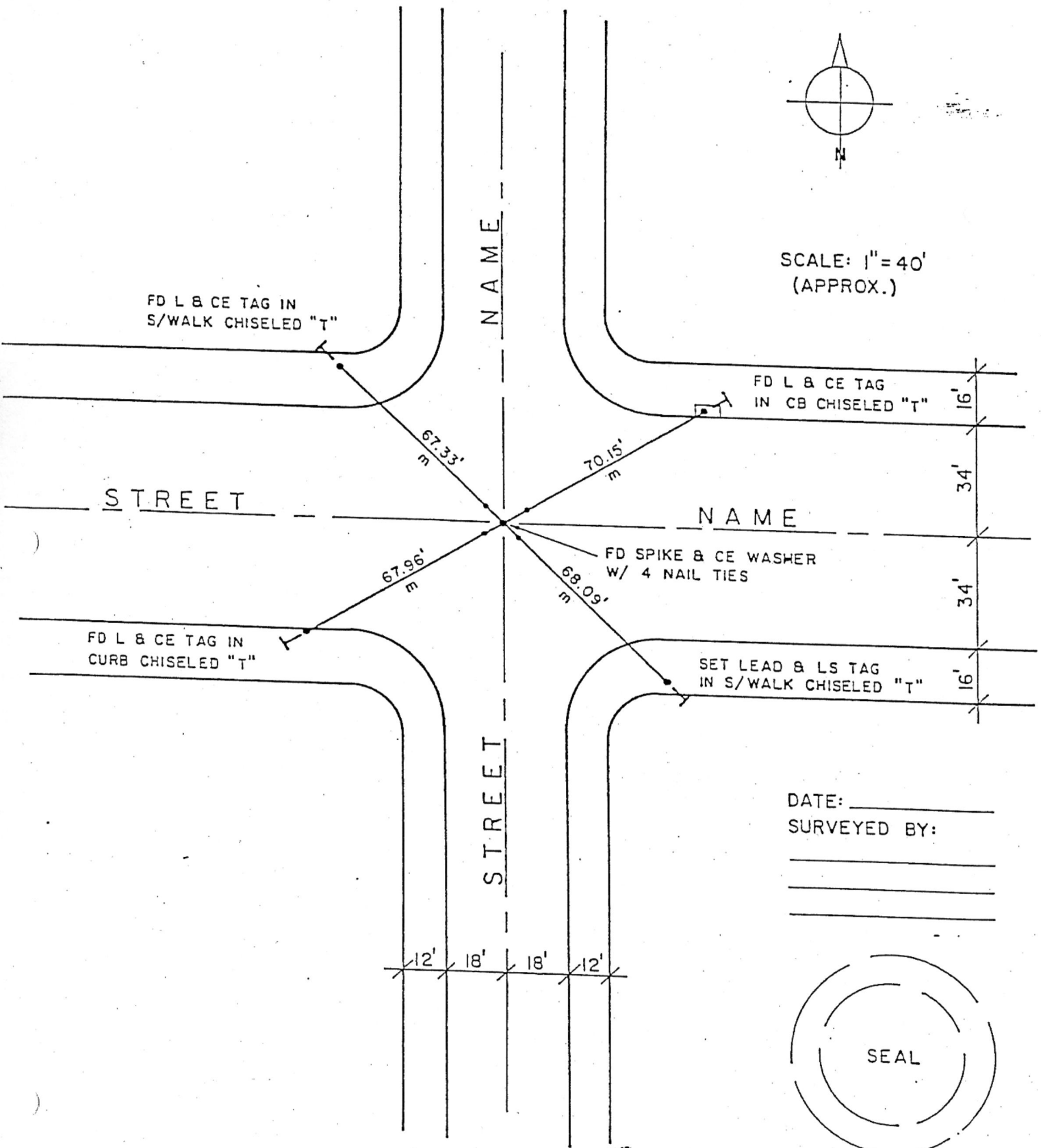
If said chiseled "T" needs to be placed, it shall be aligned so that the shaft of said "T" shall lie on the tie line projected and begin approximately 1/2" to 1" behind the tie point and by 1½" high by 1" wide.

3. Description of the Centerline Monument (and other survey monumentation in the immediate area of an intersection).

If a new centerline monument is to be set, Four (4) 1½" concrete nail ties approximately 1 foot on either side of the centerline monument along the tie lines are set on the pavement aligned by use of a theodolite along the tie lines. A G.I. spike (1/4" by 2" in length) and bronze washer (1/16" thick by 1½" diameter) is to be hammered into the street asphalt pavement with the spike head flush to the surface. The four nails in turn are used in locating the centerline point with a punch mark on the spike head by intersection of (plumb bob) strings stretched from the nail heads.

4. All monuments in the immediate intersection vicinity shall be identified and included in the tie notes to assure proper reference.
5. Seal of the person licensed to practice surveying with all pertinent information, i.e., name, license number, date, phone number, etc.

SAMPLE & TIE LINE NOTES



SP 3-14