

COHASSET ST.

San Fernando Rd. (S.W. Rdwy.) To 135th W/O Lockheed

- Profile -

V-6735

NO-71926 (Cohasset St. bet. San Fernando Rd. (S.W. Rdwy.) + Lockheed Dr.)

Goetz 10-31-60

Moresca

Smith

Tsuyahama

Indexed
Grade Sheets
Platted
Checked
Estimated

Plat pg. 29

Ref. 12943-61 + Tr. # 23182-2

Sta. New - 0+00 - Int. San Fernando

Rd. (S.W. Rdwy.) + Cohasset St.

Tree + Pale schedule pg. 30 Lt.

1956 Adj. B.Ms. 27394-4

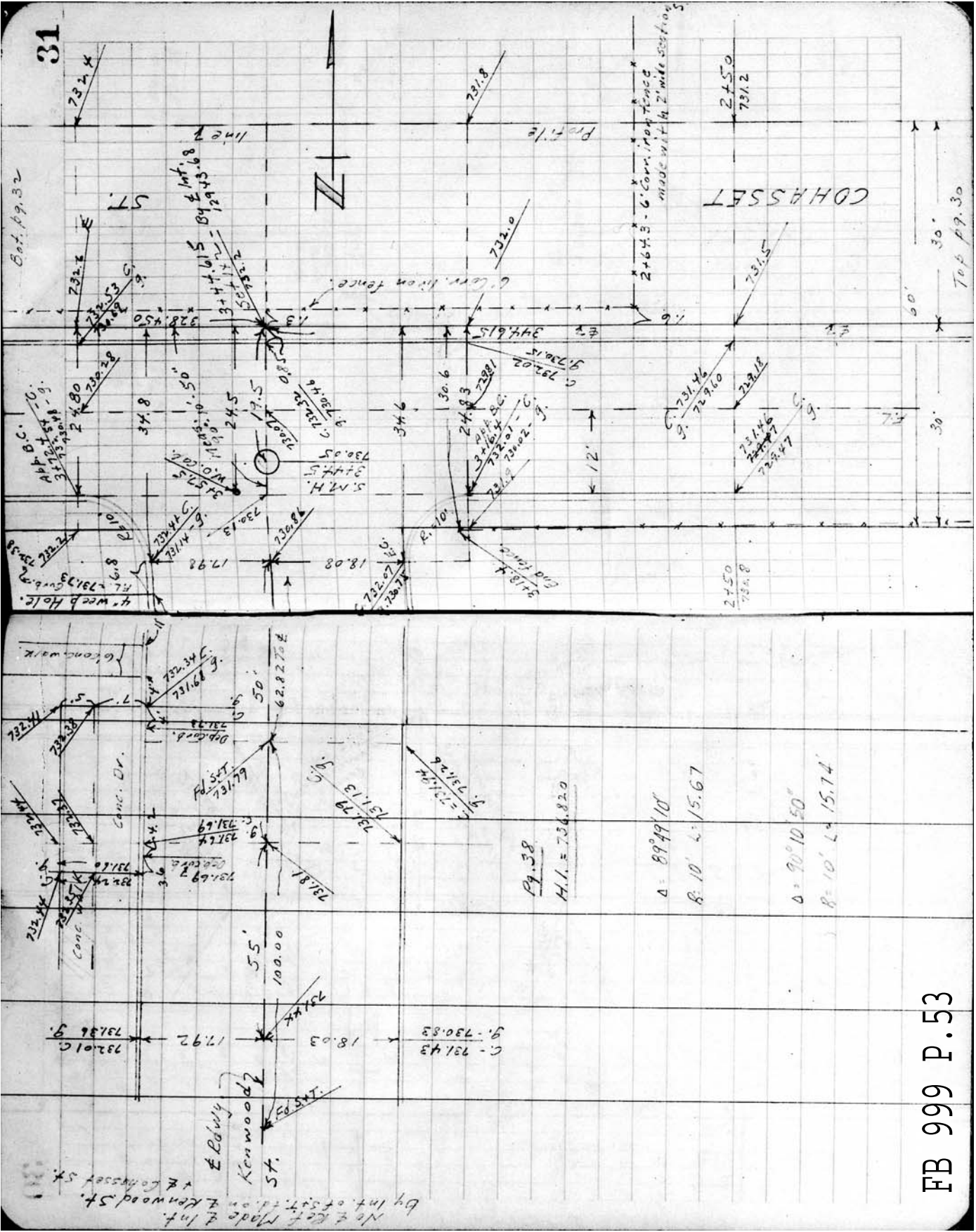
Elevs. on plat lenker rod used

Lenker rod levels pg. 38

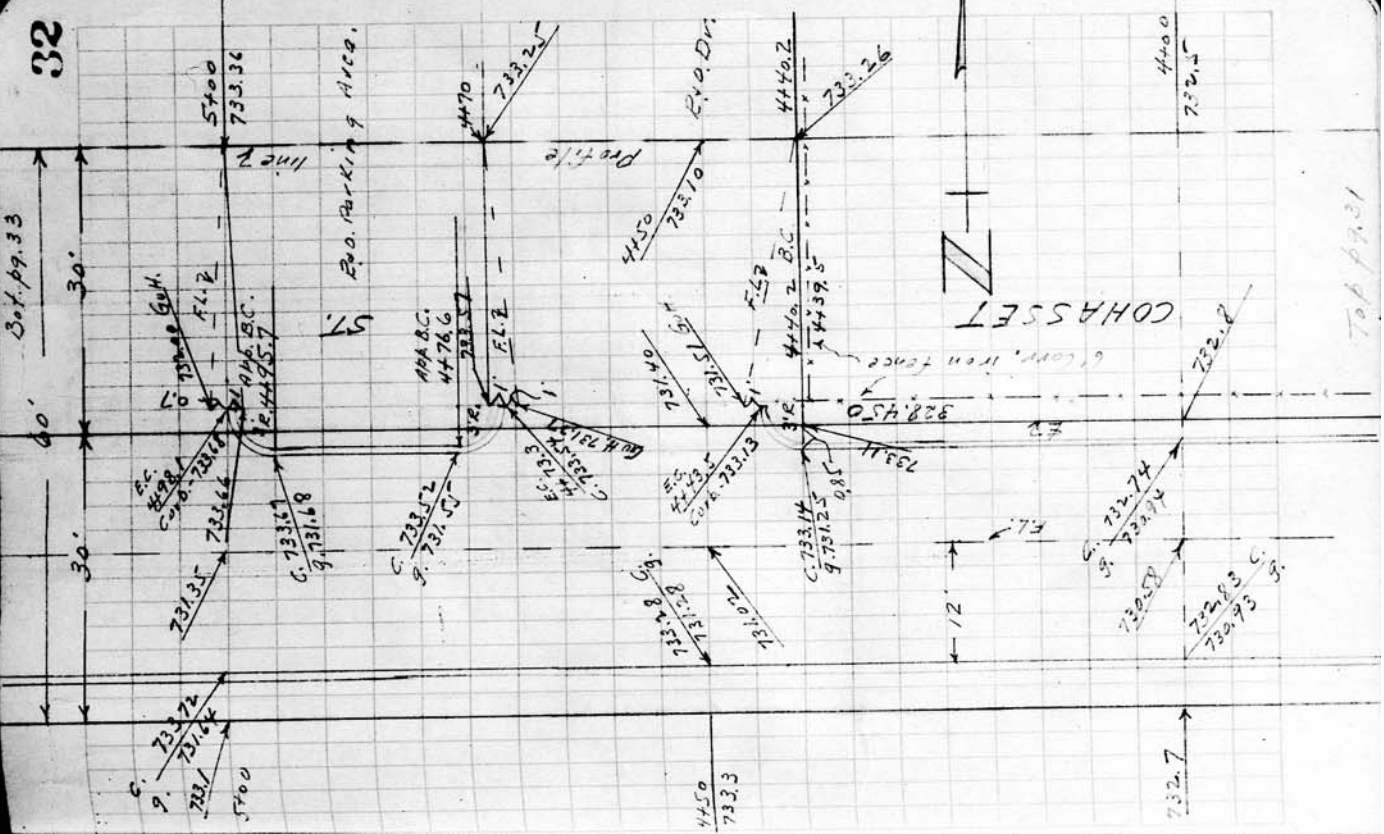
THESE ELEVATIONS ARE TYPED ON U.S.G.S. DATA

ADOPTED JULY 1st, 1925. CORRECTION No. 52, 27

1956 ADJUSTMENT



Cohasset St.

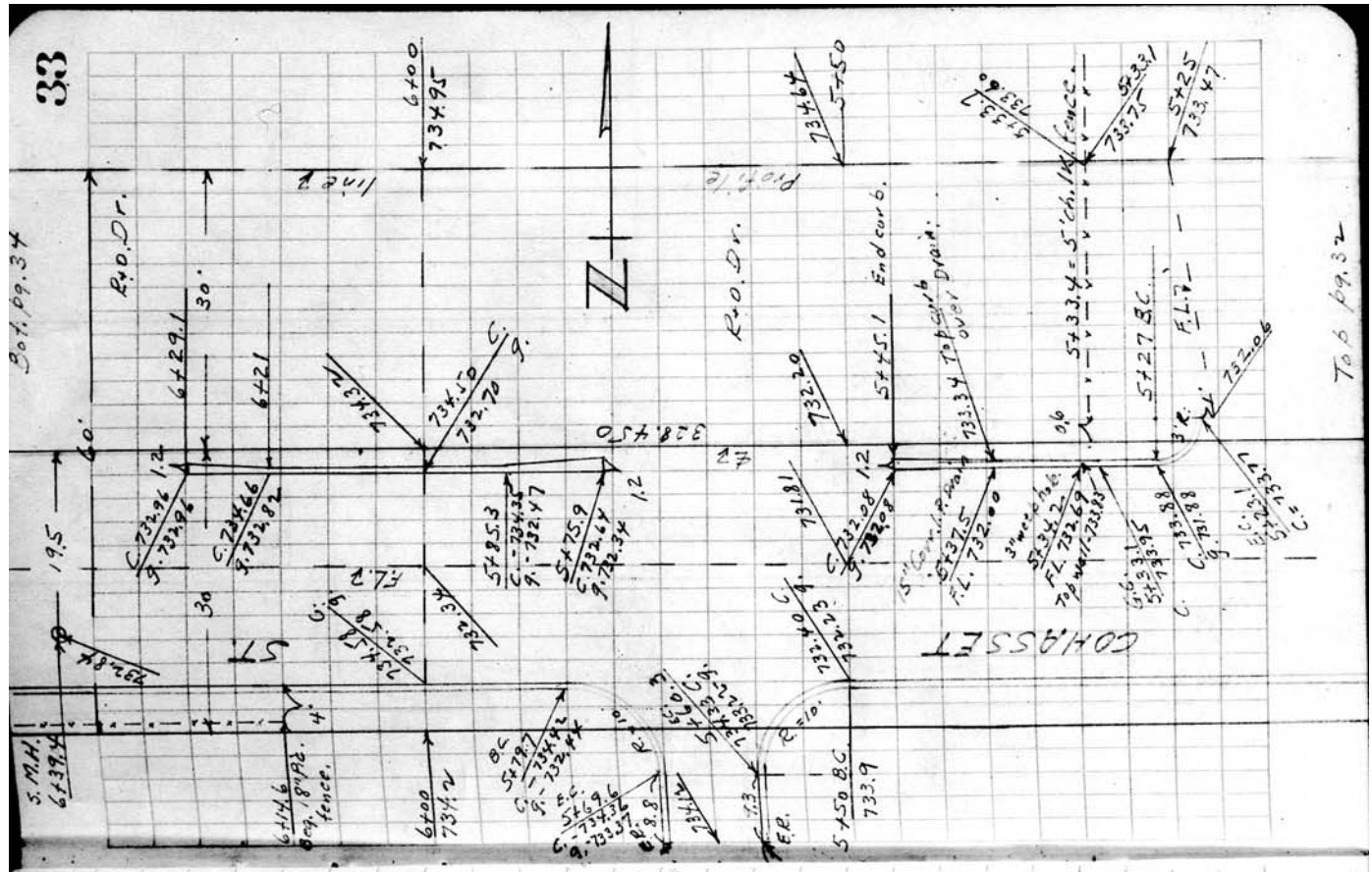


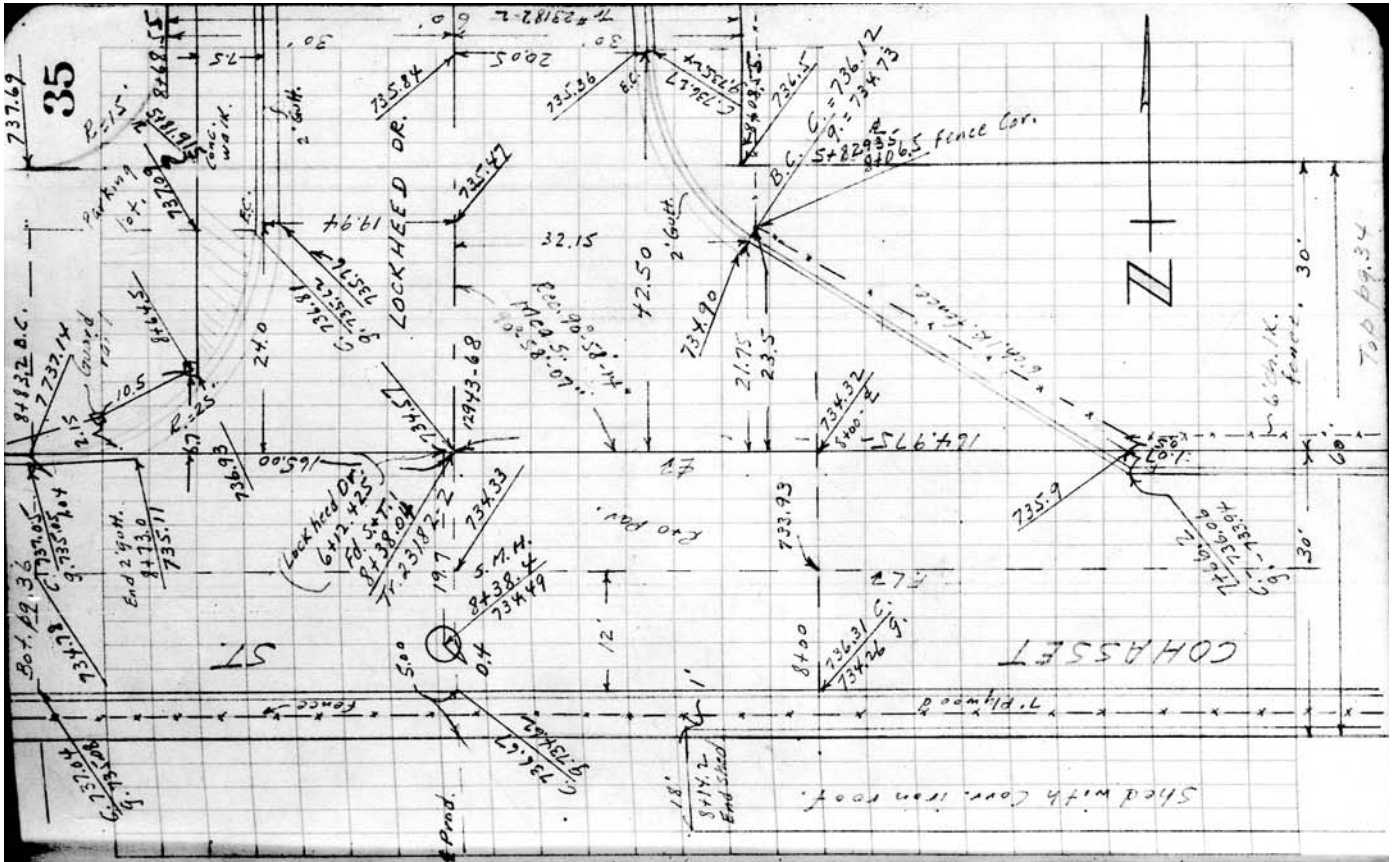
P.O. 38
H.I. = 738.535

Cohasset St.

Pg. 38
H.I. = 138.535

C 734.22
9. 734.22
R.O.D.
A 442.6
734.20





Cohasset St.

Pg. 38
H.L. = 747.170

28

FB 999 P. 57

NOV 10 1925

Cohasset St. Lecker rod levels

Sta.	Set	H.I.	Read	Elev.	1956 B.Ms.
B.M.	8.840	733.880		728.240	27394.6
T.P.	1.400	736.820	1.400	731.400	
B.M.(T.P.)	2.570	738.535	2.570	732.570	27394.5 732.570
T.P.	4.935	741.055	4.935	734.935	
T.P.	6.100	742.170	6.100	736.100	
B.M.(T.P.)	6.875	743.225	6.880	736.880	27394.5 736.875
B.M.(check)			7.235	737.235	27394.5 737.240

Spk. S.W. curb San Fernando Rd. (S.W. Edwy.)
 1.5 S.E. of B.C. ref. S. Cor. San Fernando Rd.
 + Cohasset St.

Spk. S. curb Cohasset St. 2' N/o curb B.C. S.W. Cor.
 Cohasset St. + Kenwood St.

L.Y.T. S. curb Cohasset St. 6' W/o W. curb line
 Prod. of Lockheed Dr.

Spk. N. Curb Lockheed Dr. 56' ± N/o B.C. curb
 ref. N.W. Cor. " + Cohasset St.

THESE ELEVATIONS ARE BASED ON U.S.G.S. DATUM
 ADOPTED JULY 1st, 1925. ORDINANCE NO. 58222
 1956 ADJUSTMENT

FB 999 P.60

LOCKHEED DR.

232' ± W/o To Cohasset St.

- Profile -

V-6735

WO-71926 (Cohasset St. bet. San Fernando Rd.
(S.W. Rdwy.) + Lockheed Dr.)

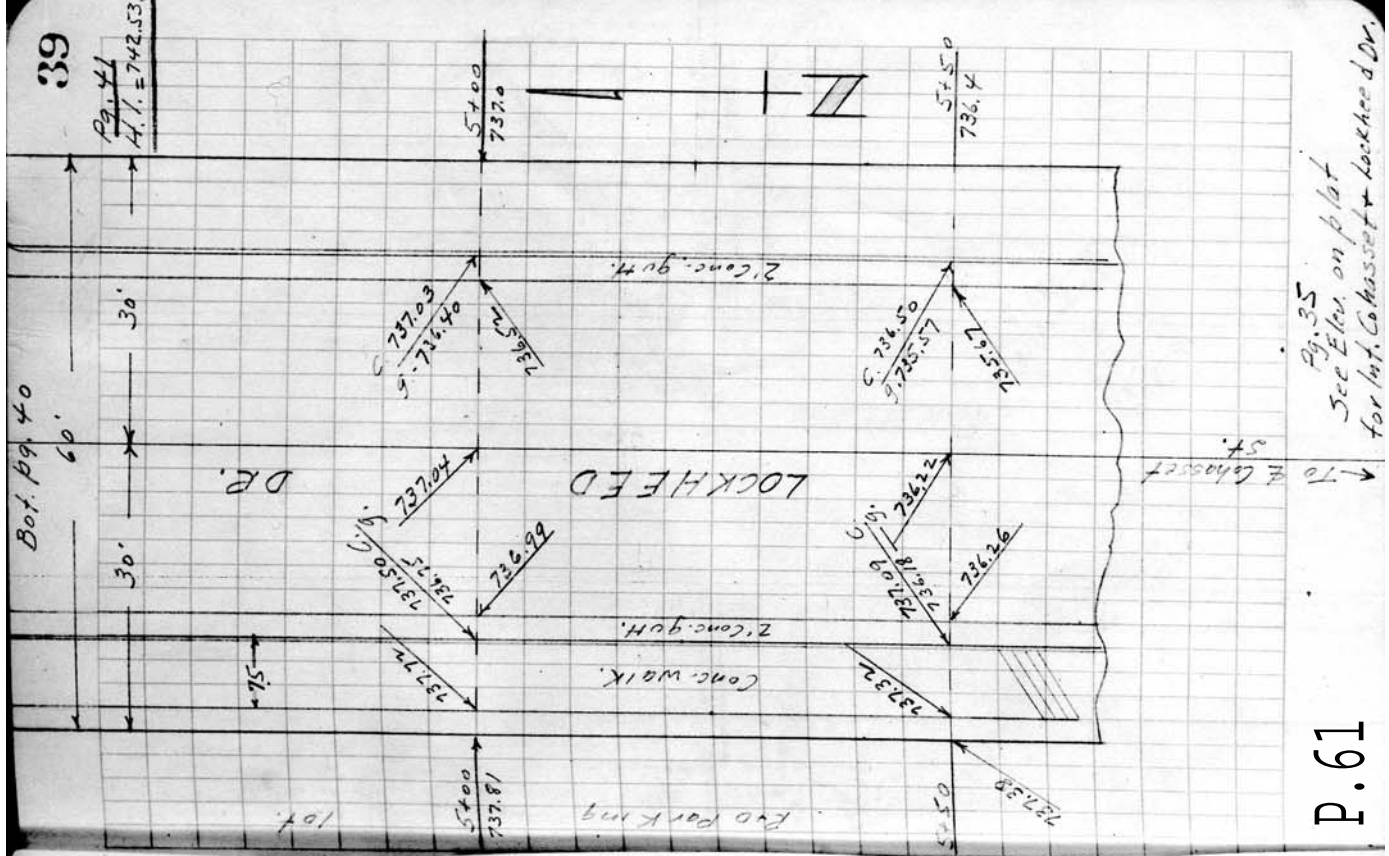
Goetz 11-1-60
Morasco
Smith
Tsuchiyama

Indexed	NOV 10 1960
Grade Sheets	
Platted	
Checked	
Estimated	

Ref. Th. # 23182-2
Sta. New 0+00 ± Int. San Fernando Rd.
(S.W. Rdwy.) + Lockheed Dr.
1956 Adj. B.M.s. Pg. 38
Elevs. on plat - fence rod used.
Lenker rod levels pg. 41

THESE ELEVATIONS ARE BASED ON U.S.G.S. DATUM,
ADOPTED JULY 1st, 1923. CORRECTION No. 52, 22
1956 ADJUSTMENT

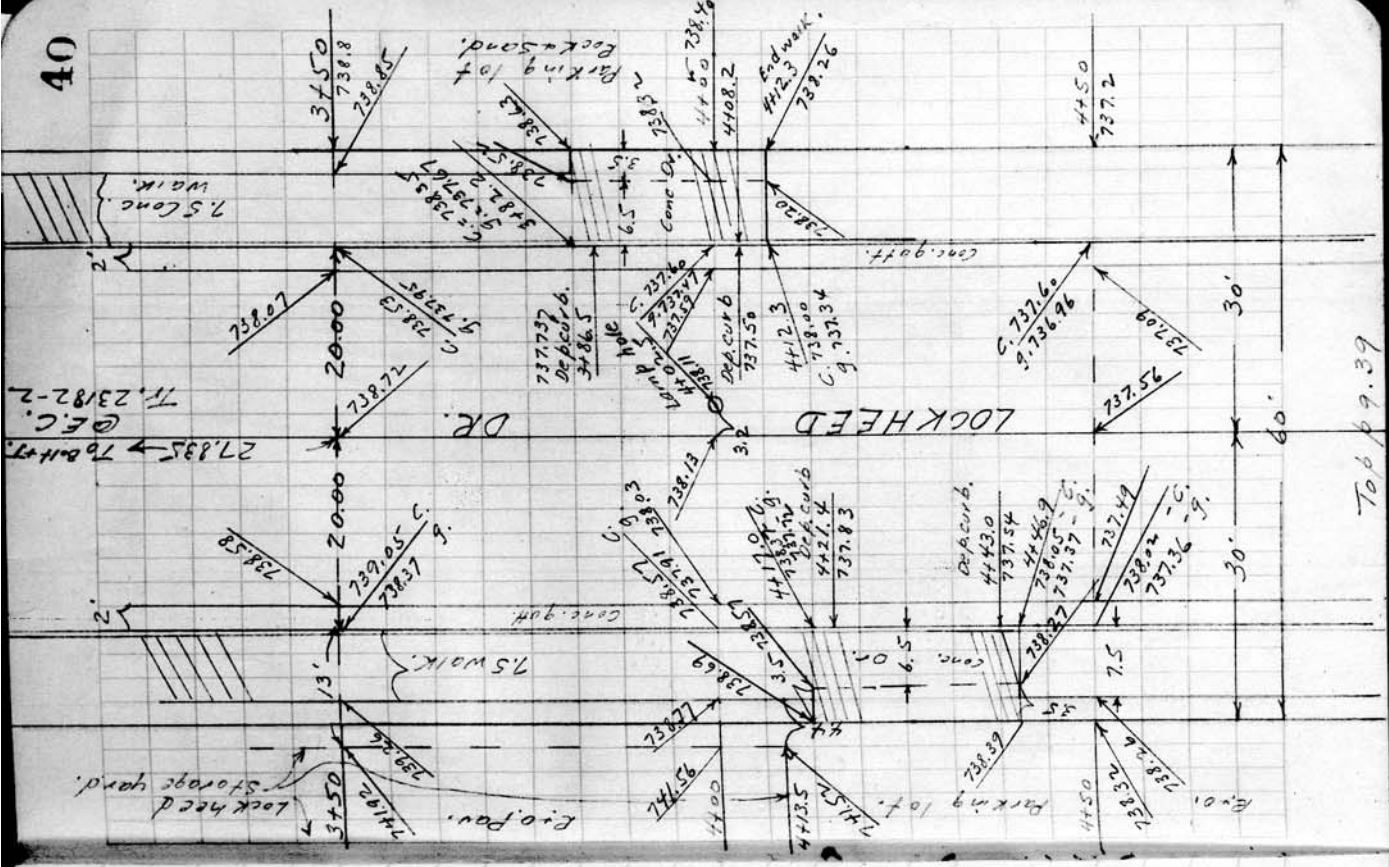
FB 999 P. 61



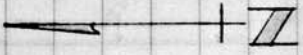
39

Pg. 41
A.L. = 742.53

Pg. 35
See Elev. on plat
for Int. Cohasset + Lockheed Dr.



Lockheed Dr.



Pg. 41
 H.I. = 742.530

Top 69.39

NOV 10 1960

Lockheed Dr. Lenker rod levels.

Sta	Set	H.I.	Read	Elev.
B.M.	7.235	742.530	6.870	737.235
B.M.(check)				736.870
				736.880
				27394.5
				736.875

Spx. N. curb Lockheed Dr. 56' ± N/o B.C.
 curb re f. N.W. Cor. " + Cohasset St.
 L+T. S. curb Cohasset St. 6' W/o W. curb
 line prod. of Lockheed Dr.

THESE ELEVATIONS ARE BASED ON U.S.G.S. DATUM.
 ADOPTED JULY 1st, 1925, ORDINANCE No. 52,22
 1956 ADJUSTMENT

COHASSET ST.
 SAN FERNANDO ROAD (S.W. Rdwy.) TO
 135' W/O LOCKHEED DRIVE
 LOCKHEED DRIVE
 SAN FERNANDO ROAD - (S.W. Rdwy.) TO COHASSET
 ST.

— & SURVEY + TIES —

V-6735
 W.D. 71926 (Cohasset St. bet. San Fernando Rd. (S.W. Rdwy.)
 and Lockheed Dr.)
 Nov. 9, 1960

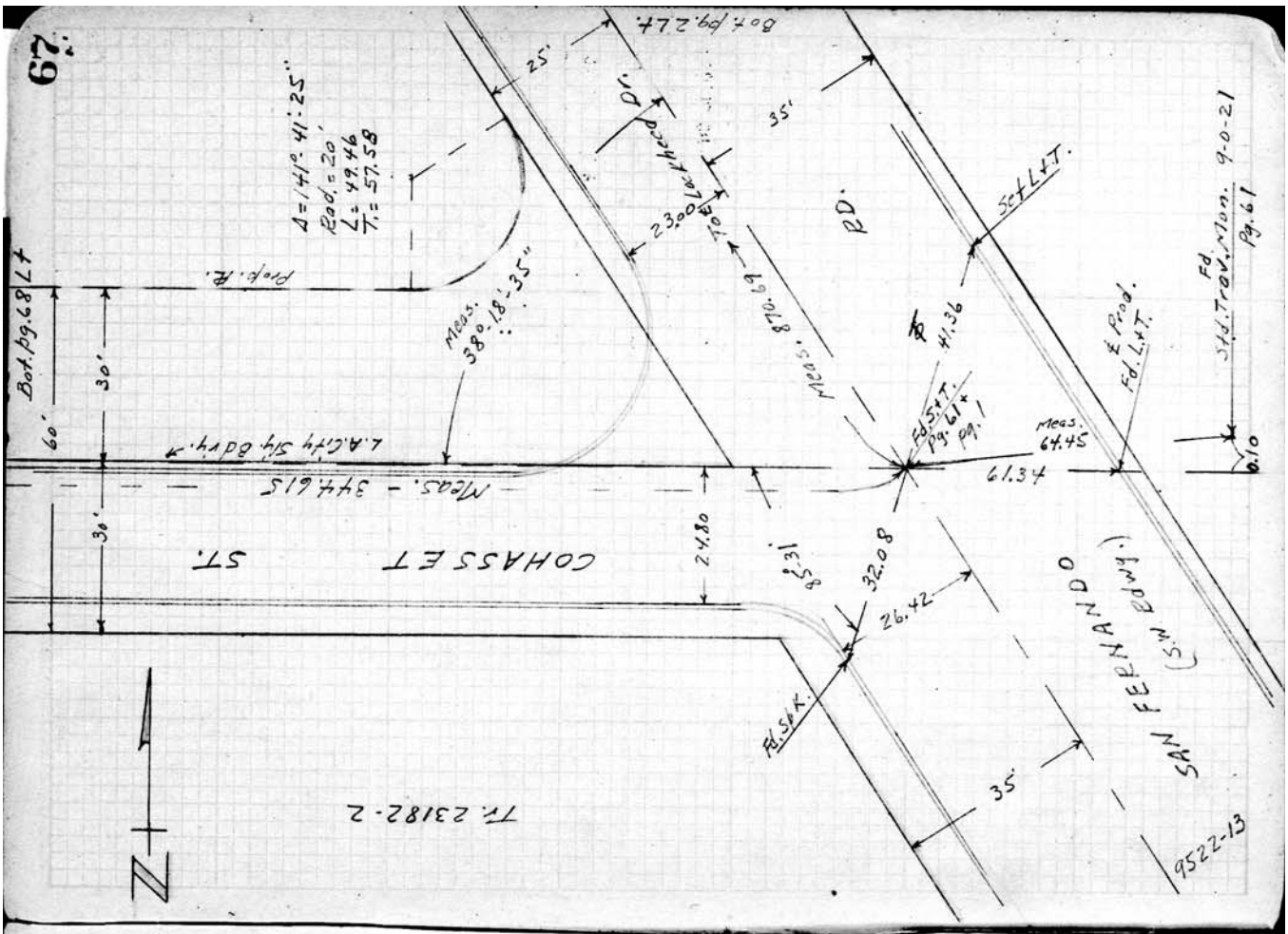
Goetz
 Morosco
 Smith
 Tsuchiyama

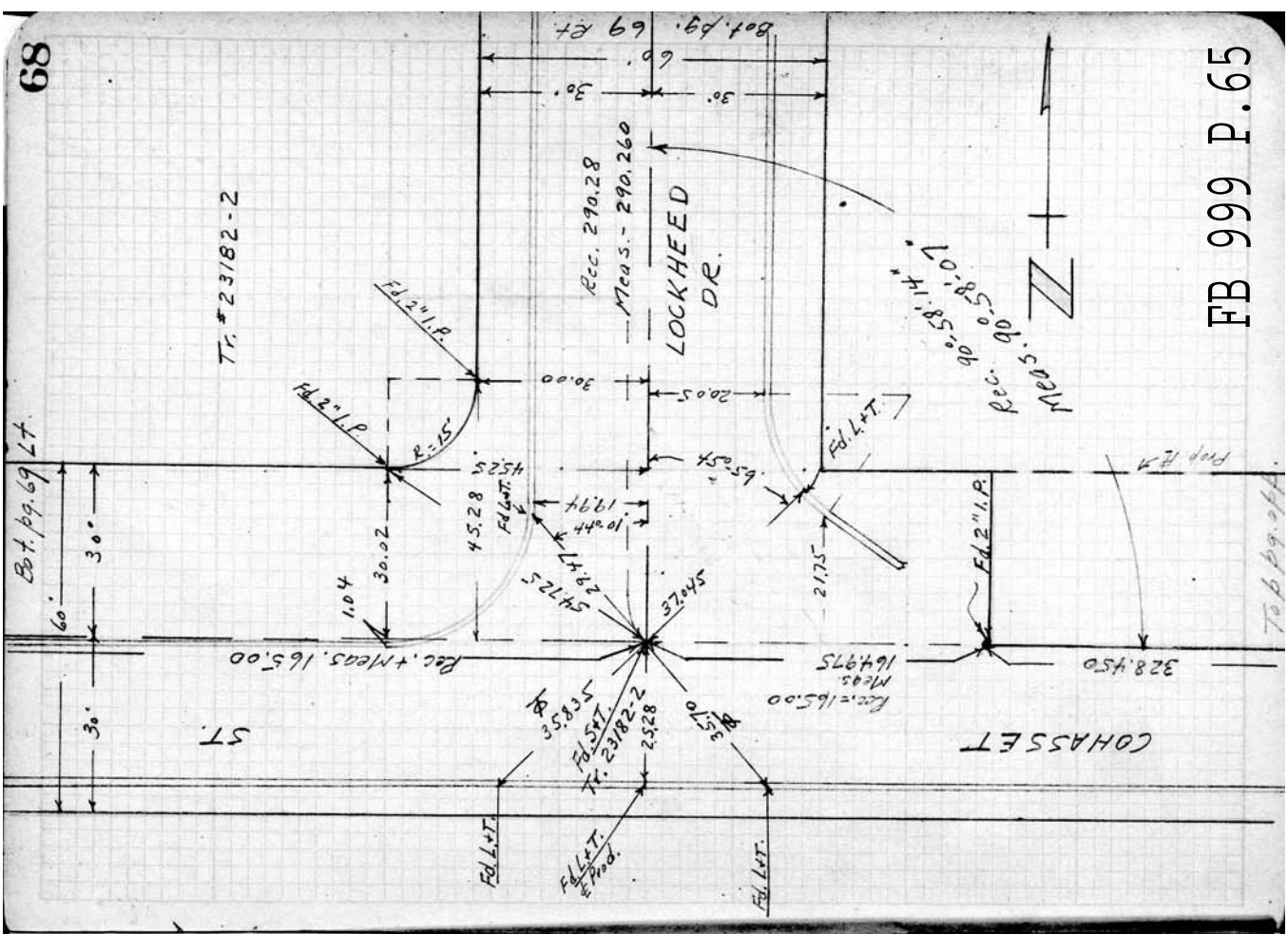
& Ref. Pgs. 1 + 61
 Tract Map # 23182 Sheet 2

Tape # L-580 Tension = 18#

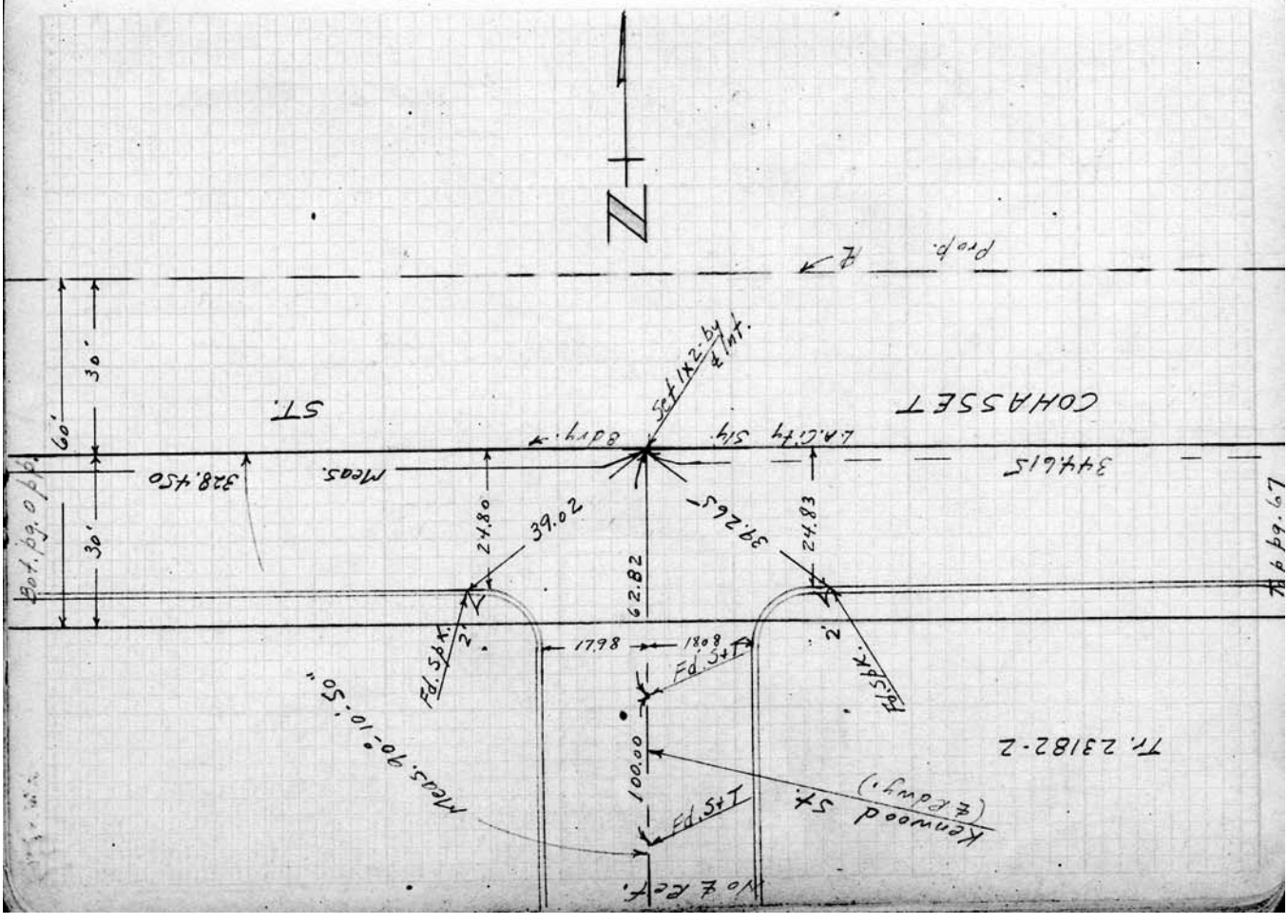
All dists. shown as meas. have been corrected
 to 68° F.

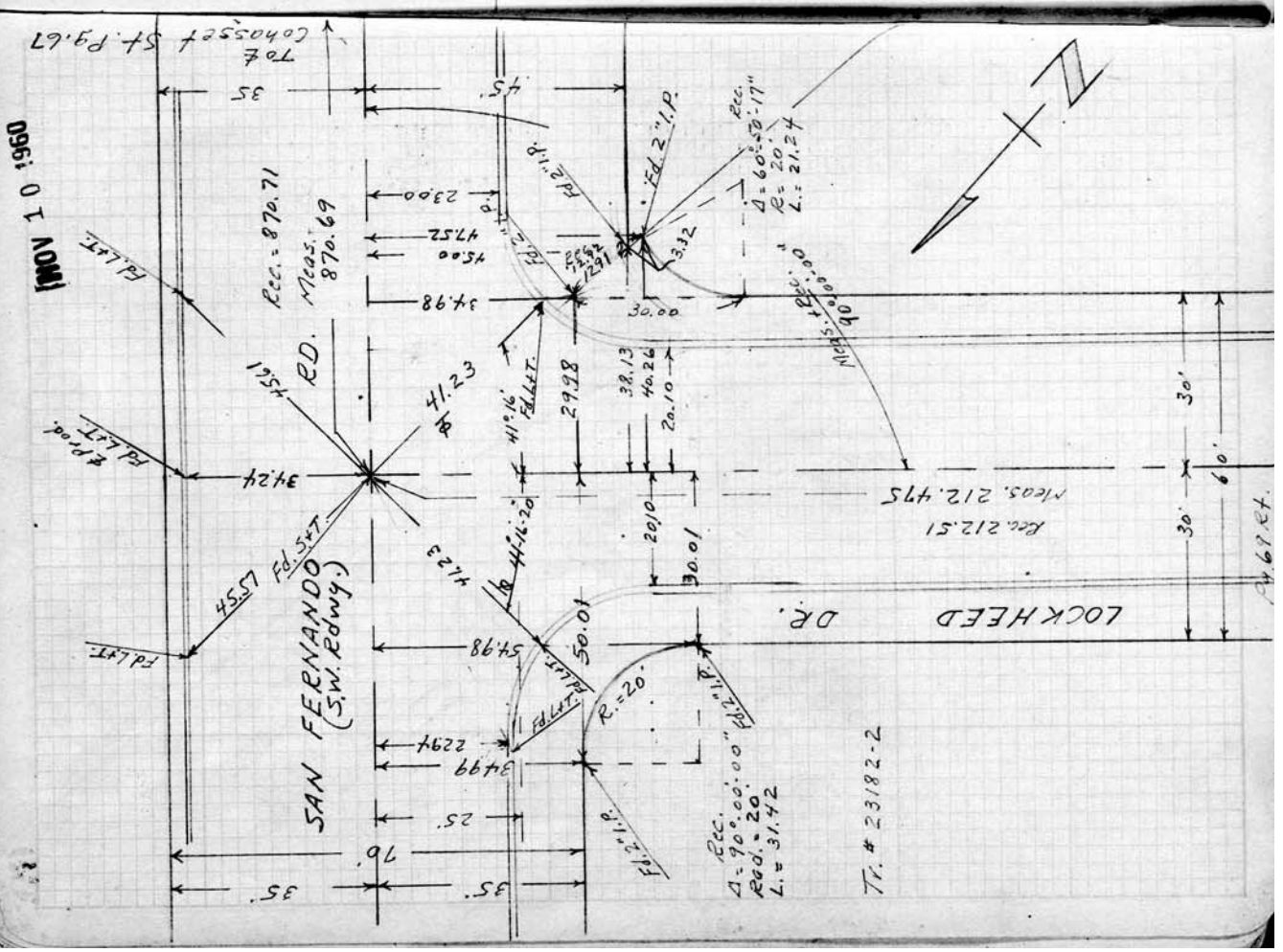
FB 999 P. 64





FB 999 P.65





096: 0 1 100M

469.47