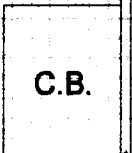


FB 341 P.59

STREET

MARIPOSA

ORANGE GROVE AVENUE



SET L & TAG
LS 4016 WITH
CHIS'D "T"

FD. 4 NAILS
AROUND SMH
NO REF.

SET L & TAG
LS 4016 WITH
CHIS'D "T"

FD. LACFCD
TAG NO REF.

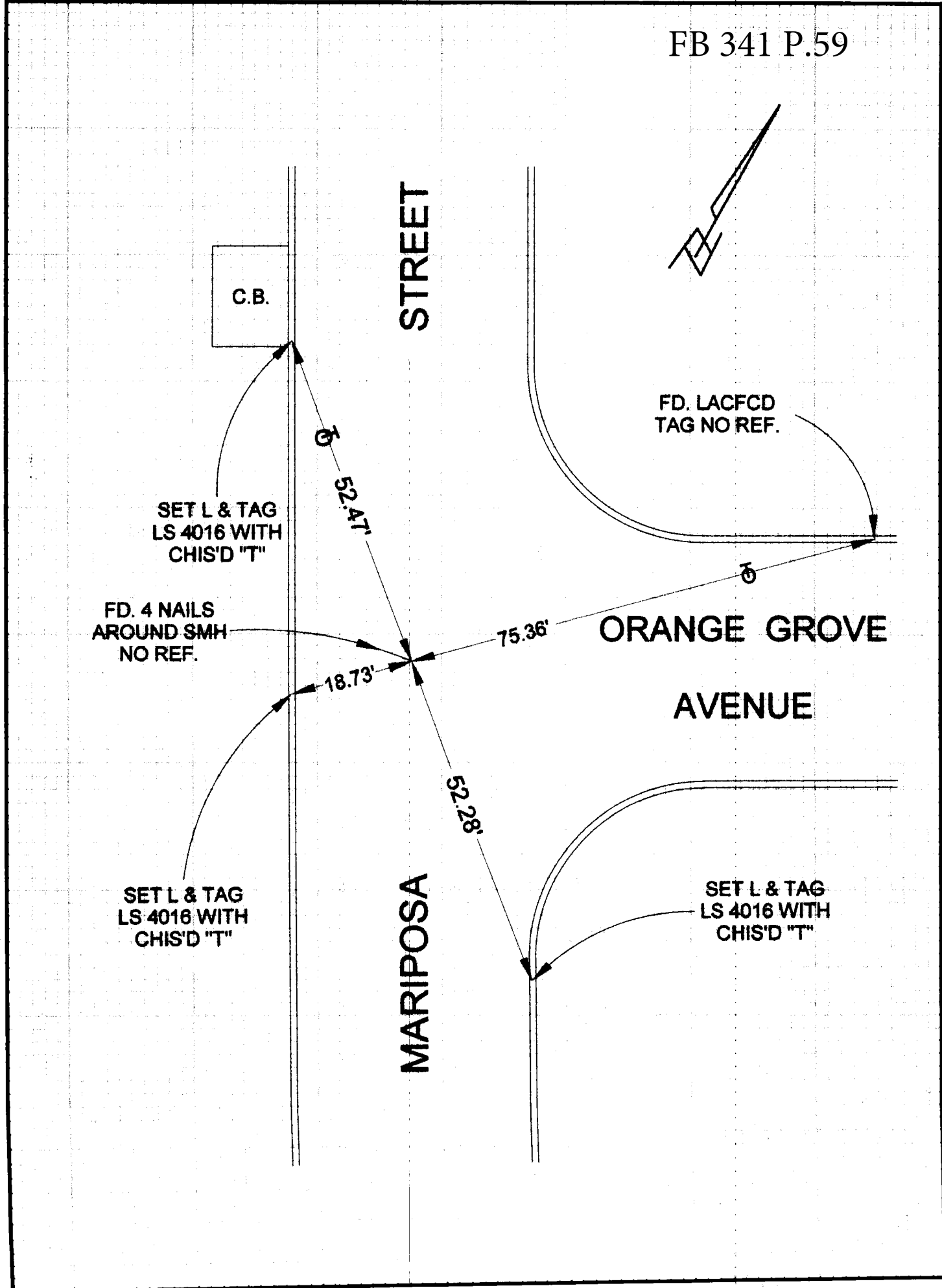
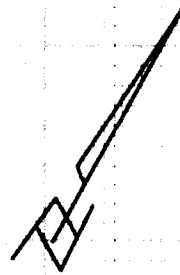
SET L & TAG
LS 4016 WITH
CHIS'D "T"

52.47'

18.73'

75.36'

52.28'



PWFB 1719

1262

CORNER RECORD

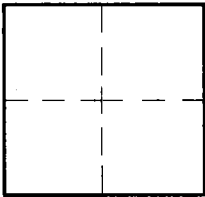
City of BURBANK

Document Number _____

County of Los Angeles, California

Brief Legal Description MARIPOSA STREET & ORANGE GROVE AVENUE

14303



CORNER TYPE

Govt. Corner Control
 Meander Property
 Rancho Other
 Date of Survey 6/20/14

COORDINATES (Optional)

N. _____
 E. _____
 Zone _____ NAD27 NAD83
 NAD83 Epoch _____
 Elev. _____
 Vert. Datum: NGVD29 NAVD88
 Meas. Units: Metric Imperial

Corner - Left as found Found & tagged Established Reestablished Rebuilt

Identification and type of corner found: Evidence used to identify or procedure used to establish or reestablish the corner:

SEE PLAT

A description of the physical condition of the monument as found and as set or reset: _____

SEE PLAT

SURVEYOR'S STATEMENT

This Corner Record was prepared by me or under my direction in conformance
 with the Land Surveyors' Act on JUNE 20, 2014

Signed David L. Lindell P.L.S. or R.C.E. No. LS 4016



COUNTY SURVEYOR'S STATEMENT

This Corner Record was received JUN 24 2014 SEP 02 2014 SEP 16 2014
 and examined and filed SEP 23 2014

Signed Curt M. O'Bryan P.L.S. or R.C.E. No. 6388

Title: DEPUTY COUNTY SURVEYOR



County Surveyor's Comment _____