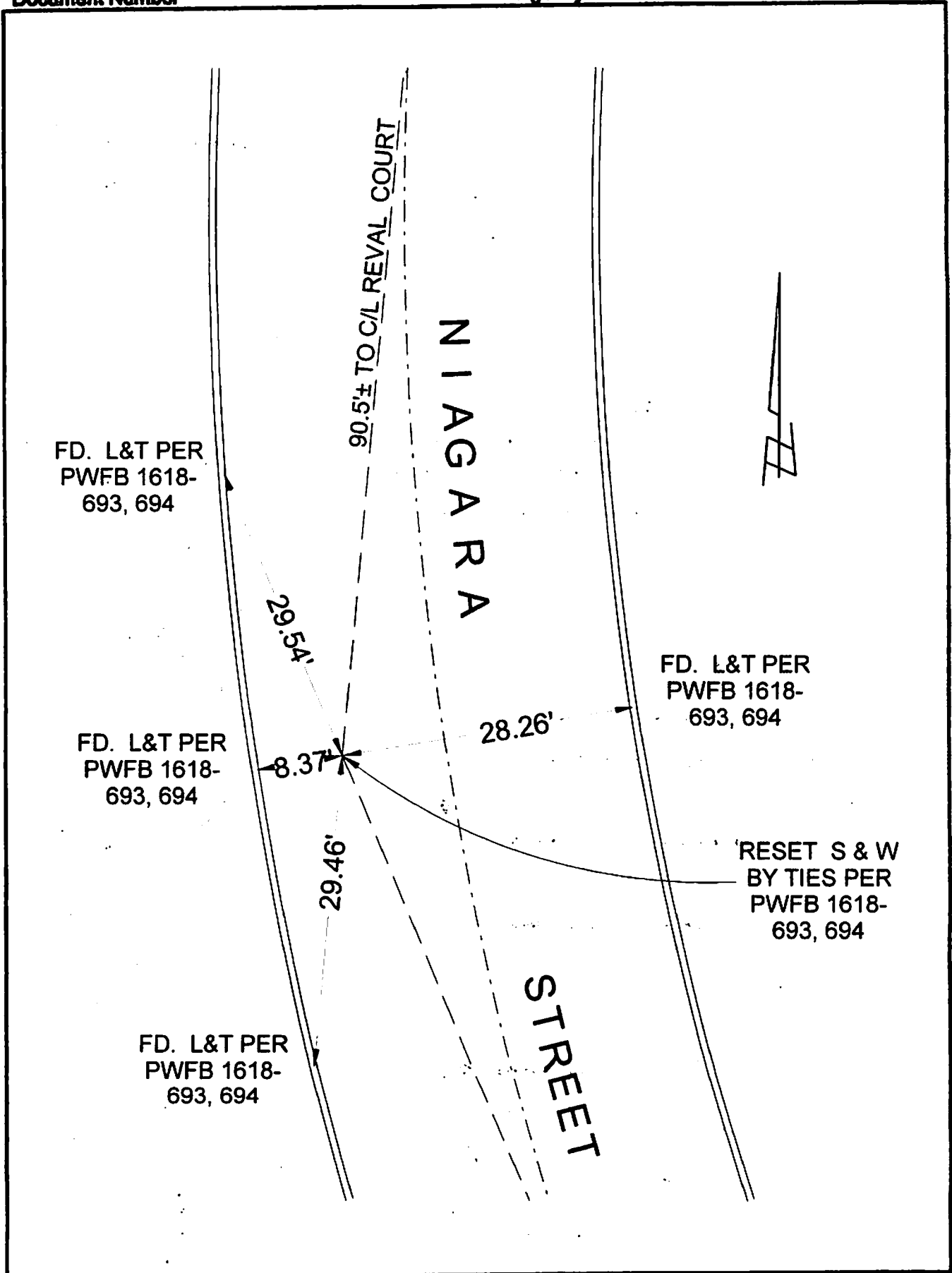


FR 340 P. 89

Document Number

Agency Index



CORNER RECORD

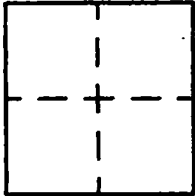
Agency Index _____

Document Number _____

City of BURBANK

County of LOS ANGELES, California

Brief Legal Description NIAGARA STREET P.I. 90.5'± S/O REVAL COURT



CORNER TYPE

- Government Corner
- Meander
- Rancho
- Control
- Property
- Other

Date of Survey 9/12/19

COORDINATES (Optional)

N. _____ E. _____

Elevation _____

Units Metric U.S. Survey Foot

Horizontal Datum _____

Zone _____ Epoch Date _____

Vertical Datum _____

Complies with Public Resources Code §§8801-8819

Complies with Public Resources Code §§8890-8902

PLS Act Ref: 8768(d) 8771 8773 Other: _____

Corner/Monument: Left as found Established Rebuilt Pre-Construction

Found and tagged Reestablished Referenced Post-Construction

Narrative of corner identified and monument as found, set, reset, replaced, or removed:

See sheet #2 for description(s) :

SURVEYOR'S STATEMENT

This Corner Record was prepared by me or under my direction in conformance with

the Professional Land Surveyors' Act on SEPTEMBER 13, 2019

Signed David L. Lindell P.L.S. or R.C.E. No. LS 4016



COUNTY SURVEYOR'S STATEMENT

This Corner Record was received _____,

and examined and filed _____,

Signed _____ P.L.S. or R.C.E. No. _____

Title _____

County Surveyor's Comment

A.P.N.: N/A

T.G. 563-E-4