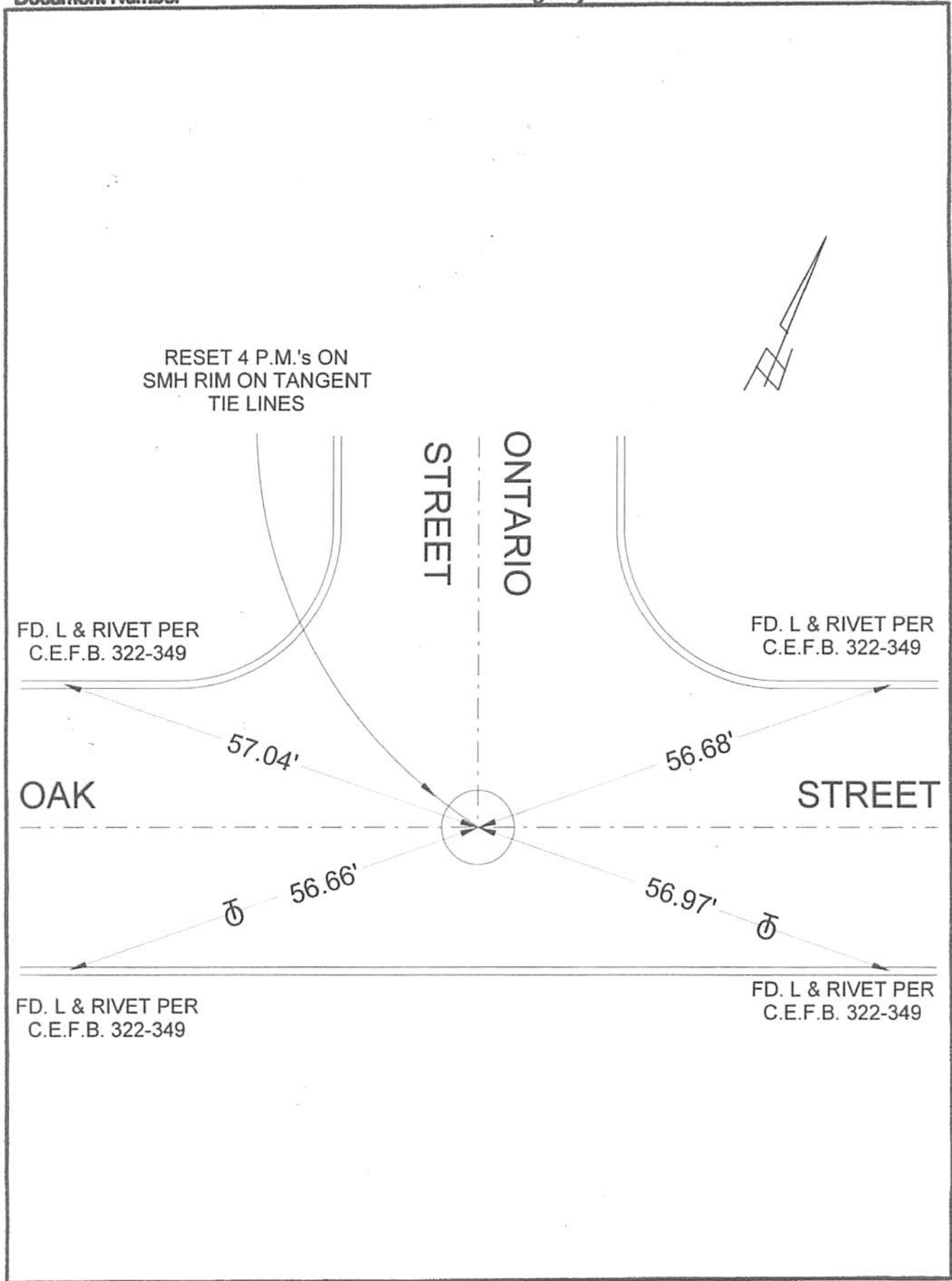


FB 340 P. 83

Document Number

Agency Index



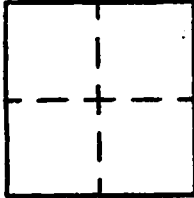
# CORNER RECORD

Agency Index \_\_\_\_\_  
Document Number \_\_\_\_\_  
County of LOS ANGELES, California  
STREET

City of BURBANK  
Brief Legal Description OAK STREET & ONTARIO

### CORNER TYPE

### COORDINATES (Optional)



- Governmental Corner
- Meander
- Rancho
- Control
- Property
- Other

Date of Survey 9/16/19

N. \_\_\_\_\_ E. \_\_\_\_\_  
Elevation \_\_\_\_\_  
Units  Metric  U.S. Survey Foot  
Horizontal Datum \_\_\_\_\_  
Zone \_\_\_\_\_ Epoch Date \_\_\_\_\_  
Vertical Datum \_\_\_\_\_  
 Complies with Public Resources Code §§6801-6819  
 Complies with Public Resources Code §§6890-6902

- PLS Act Ref:  8763(d)  8771  8773  Other
- Corner/Monument:  Left as found  Established  Rebuilt  Pre-Construction  
 Found and tagged  Reestablished  Referenced  Post-Construction

Narrative of corner identified and monument as found, set, reset, replaced, or removed:  
 See sheet #2 for description(s) :

### SURVEYOR'S STATEMENT

This Corner Record was prepared by me or under my direction in conformance with  
the Professional Land Surveyors' Act on SEPTEMBER 17, 2019  
Signed David L. Lindell P.L.S. or R.C.E. No. LS 4016



### COUNTY SURVEYOR'S STATEMENT

This Corner Record was received \_\_\_\_\_,  
and examined and filed \_\_\_\_\_.  
Signed \_\_\_\_\_ P.L.S. or R.C.E. No. \_\_\_\_\_  
Title \_\_\_\_\_  
County Surveyor's Comment \_\_\_\_\_

A.P.N.: N/A

T.G. 563-E-3