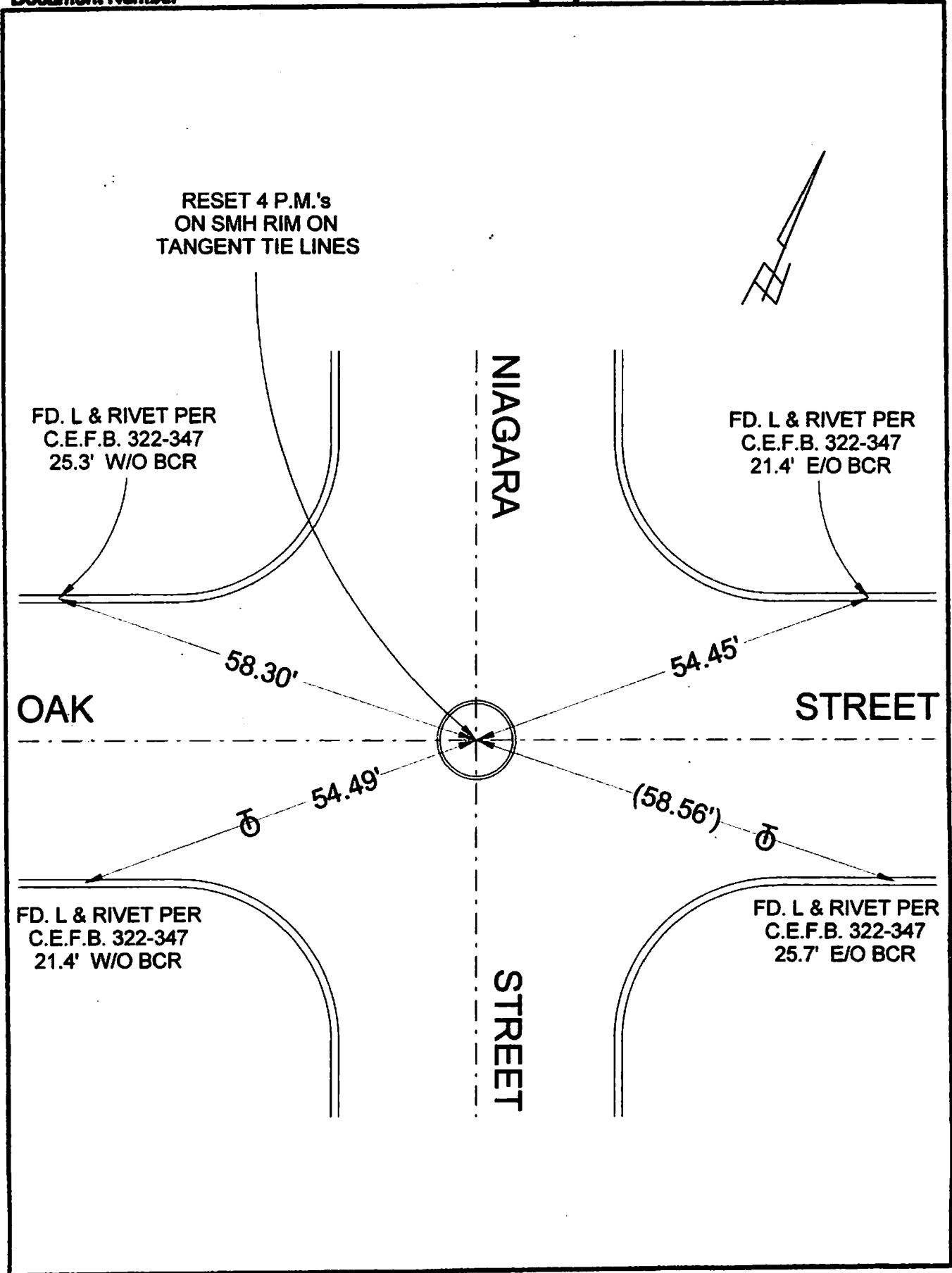


Document Number

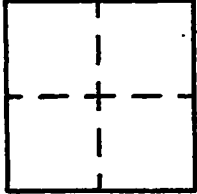
Agency Index



CORNER RECORD

Agency Index _____
Document Number _____
County of LOS ANGELES, California
STREET

City of BURBANK
Brief Legal Description OAK STREET & NIAGARA



CORNER TYPE

- Government Corner
- Meander
- Rancho
- Control
- Property
- Other

9/16/19

Date of Survey _____

COORDINATES (Optional)

N. _____ E. _____
 Elevation _____
 Units Metric U.S. Survey Foot
 Horizontal Datum _____
 Zone _____ Epoch Date _____
 Vertical Datum _____
 Complies with Public Resources Code §§6801-6816
 Complies with Public Resources Code §§6880-6892

PLS Act Ref: 8766(d) 8771 8775 Other: _____
 Corner/Monument: Left as found Established Rebuilt Pre-Construction
 Found and tagged Reestablished Referenced Post-Construction

Narrative of corner identified and monument as found, set, reset, replaced, or removed:
 See sheet #2 for description(s) :

SURVEYOR'S STATEMENT

This Corner Record was prepared by me or under my direction in conformance with
 the Professional Land Surveyors' Act on SEPTEMBER 17, 2019
 Signed David L. Lindell P.L.S. or R.C.E. No. LS 4016



COUNTY SURVEYOR'S STATEMENT

This Corner Record was received _____
 and examined and filed _____
 Signed _____ P.L.S. or R.C.E. No. _____
 Title _____
 County Surveyor's Comment _____

A.P.N.: N/A

T.G. 563-E-3