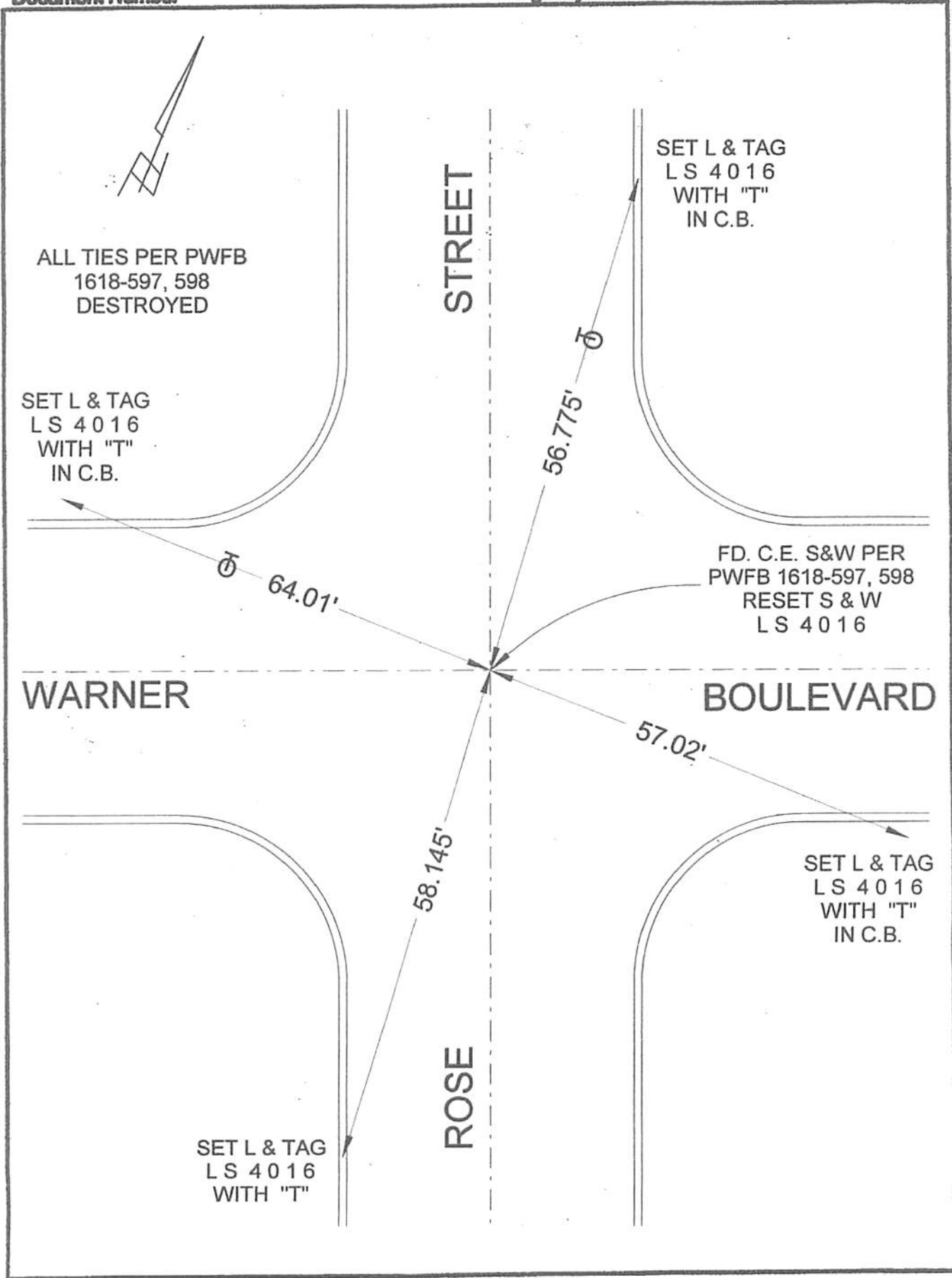


PB 340 P. 45



ALL TIES PER PWFB  
1618-597, 598  
DESTROYED

SET L & TAG  
LS 4016  
WITH "T"  
IN C.B.

SET L & TAG  
LS 4016  
WITH "T"  
IN C.B.

FD. C.E. S&W PER  
PWFB 1618-597, 598  
RESET S & W  
LS 4016

WARNER

BOULEVARD

STREET

ROSE

SET L & TAG  
LS 4016  
WITH "T"

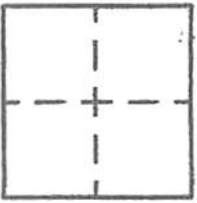
SET L & TAG  
LS 4016  
WITH "T"  
IN C.B.

# CORNER RECORD

Agency Index \_\_\_\_\_  
Document Number \_\_\_\_\_  
County of LOS ANGELES, California

City of BURBANK

Brief Legal Description ROSE STREET & WARNER BOULEVARD



### CORNER TYPE

- Government Corner
- Meander
- Rancho
- Control
- Property
- Other

Date of Survey 9/19/19

### COORDINATES (Optional)

N. \_\_\_\_\_ E. \_\_\_\_\_  
 Elevation \_\_\_\_\_  
 Units  Metric  U.S. Survey Foot  
 Horizontal Datum \_\_\_\_\_  
 Zone \_\_\_\_\_ Epoch Date \_\_\_\_\_  
 Vertical Datum \_\_\_\_\_  
 Complies with Public Resources Code §§8801-8819  
 Complies with Public Resources Code §§8800-8802

- PLS Act Ref:  8765(d)  8771  8773  Other: \_\_\_\_\_
- Corner/Monument:  Left as found  Established  Rebuilt  Pre-Construction  
 Found and tagged  Reestablished  Referenced  Post-Construction

Narrative of corner identified and monument as found, set, reset, replaced, or removed:  
 See sheet #2 for description(s) :

### SURVEYOR'S STATEMENT

This Corner Record was prepared by me or under my direction in conformance with  
 the Professional Land Surveyors' Act on SEPTEMBER 20, 2019  
 Signed David L Lindell P.L.S. or R.C.E. No. LS 4016



### COUNTY SURVEYOR'S STATEMENT

This Corner Record was received \_\_\_\_\_  
 and examined and filed \_\_\_\_\_  
 Signed \_\_\_\_\_ P.L.S. or R.C.E. No. \_\_\_\_\_  
 Title \_\_\_\_\_

County Surveyor's Comment

A.P.N.: N/A

T.G. 563-D-5