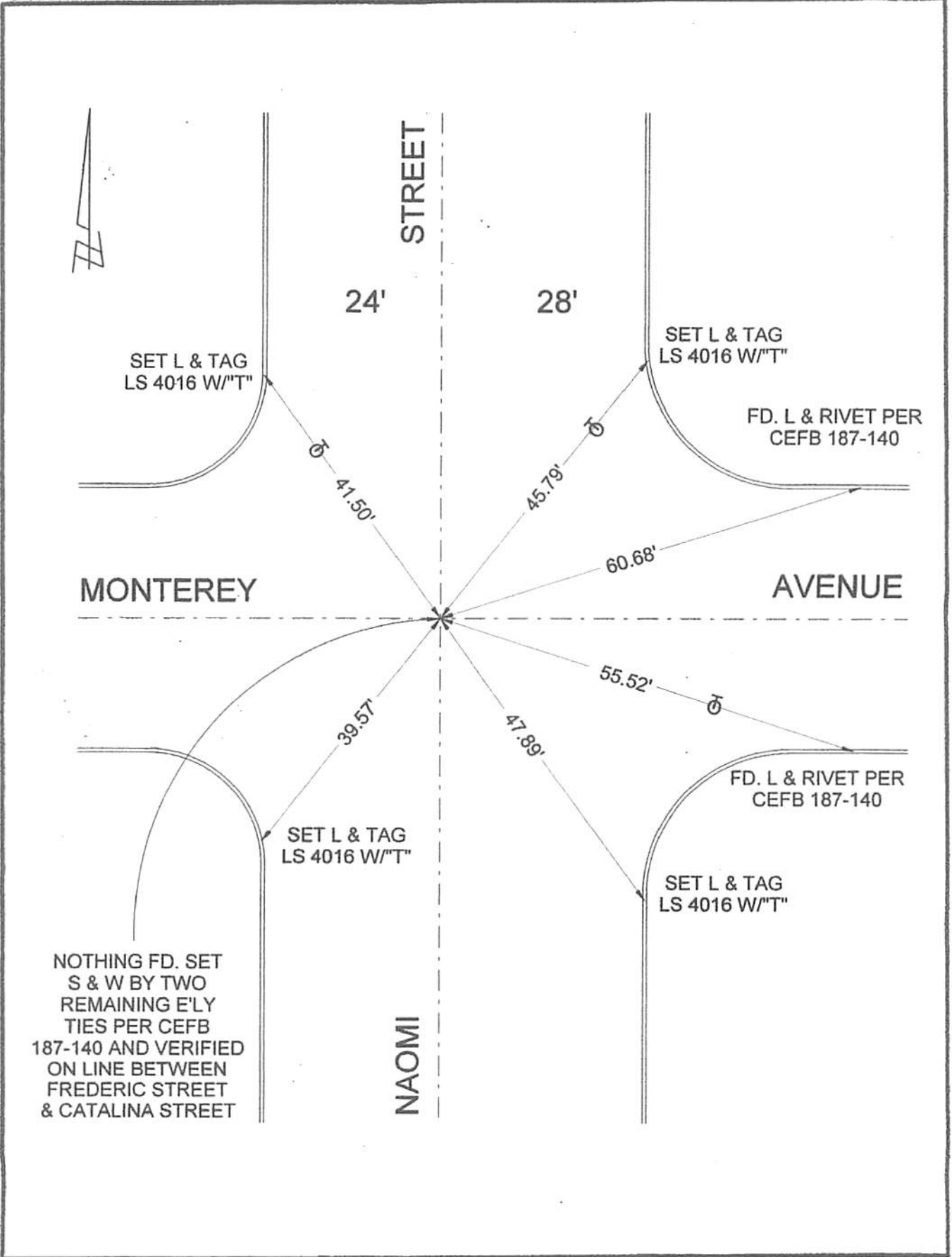


FB 340 P. 369

Document Number

Agency Index

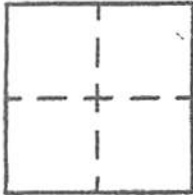


# CORNER RECORD

Agency Index \_\_\_\_\_  
Document Number \_\_\_\_\_  
County of LOS ANGELES, California

City of BURBANK

Brief Legal Description MONTEREY AVENUE & NAOMI STREET



### CORNER TYPE

- Government Corner
- Meander
- Rancho
- Control
- Property
- Other

Date of Survey 4/28/21

### COORDINATES (Optional)

N. \_\_\_\_\_ E. \_\_\_\_\_  
Elevation \_\_\_\_\_  
Units  Metric  U.S. Survey Foot  
Horizontal Datum \_\_\_\_\_  
Zone \_\_\_\_\_ Epoch Date \_\_\_\_\_  
Vertical Datum \_\_\_\_\_  
 Complies with Public Resources Code §§8801-8819  
 Complies with Public Resources Code §§8890-8902

- PLS Act Ref:  8768(d)  8771  8773  Other: \_\_\_\_\_
- Corner/Monument:  Left as found  Established  Rebuilt  Pre-Construction  
 Found and tagged  Reestablished  Referenced  Post-Construction

Narrative of corner identified and monument as found, set, reset, replaced, or removed:  
 See sheet #2 for description(s) :

### SURVEYOR'S STATEMENT

This Corner Record was prepared by me or under my direction in conformance with  
the Professional Land Surveyors' Act on APRIL 28, 2021  
Signed David L Lindell P.L.S. or R.C.E. No. LS 4016



### COUNTY SURVEYOR'S STATEMENT

This Corner Record was received \_\_\_\_\_,  
and examined and filed \_\_\_\_\_,  
Signed \_\_\_\_\_ P.L.S. or R.C.E. No. \_\_\_\_\_  
Title \_\_\_\_\_  
County Surveyor's Comment \_\_\_\_\_