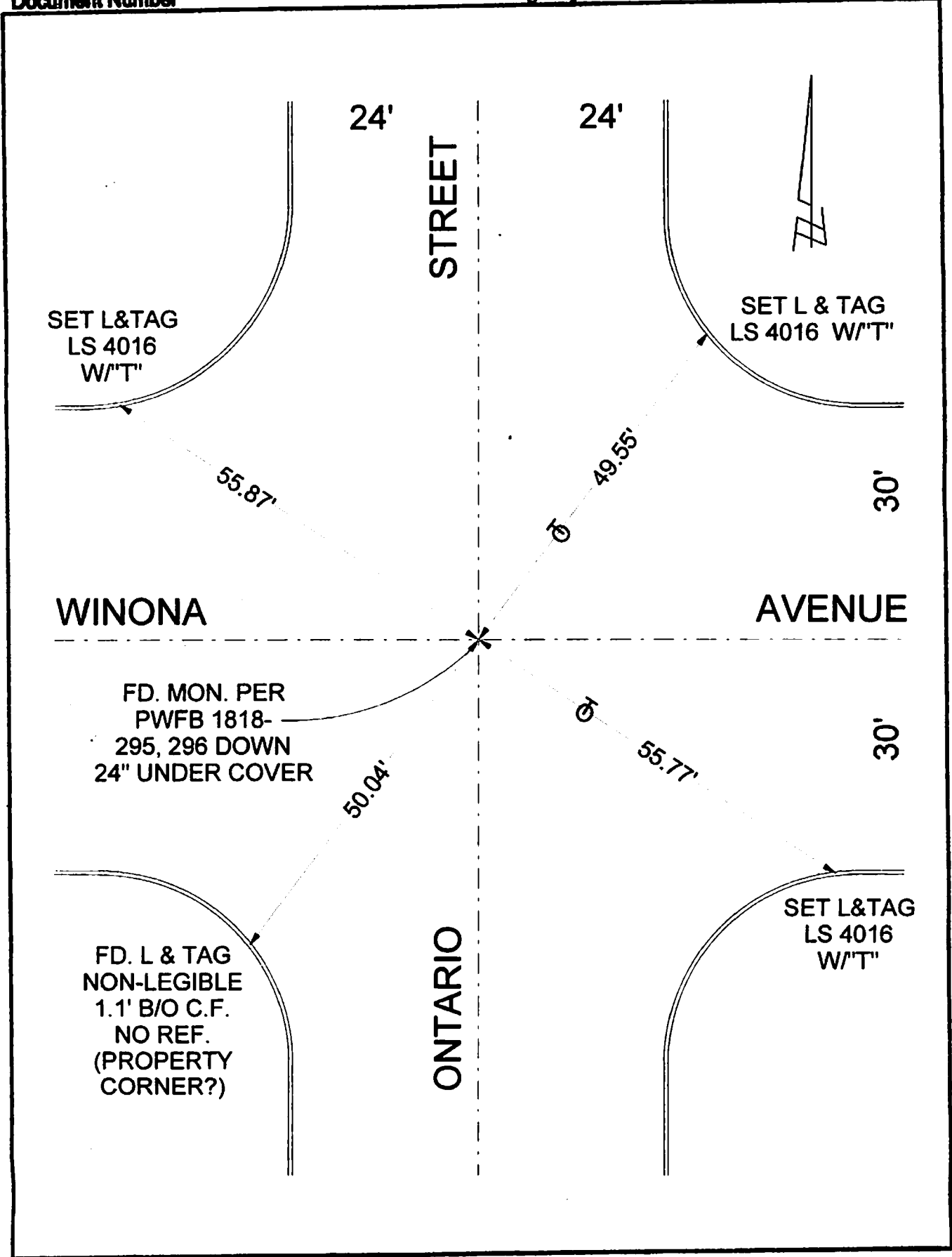


FB340 P. 349

Document Number

Agency Index

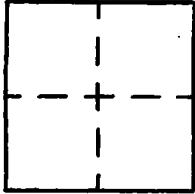


CORNER RECORD

Agency Index _____
Document Number _____
County of LOS ANGELES, California

City of BURBANK

Brief Legal Description ONTARIO STREET & WINONA AVENUE



CORNER TYPE

- Government Corner
- Meander
- Rancho
- Control
- Property
- Other

Date of Survey 5/05/21

COORDINATES (Optional)

N. _____ E. _____
 Elevation _____
 Units Metric U.S. Survey Foot
 Horizontal Datum _____
 Zone _____ Epoch Date _____
 Vertical Datum _____
 Complies with Public Resources Code §§6801-6819
 Complies with Public Resources Code §§6880-6802

- PLS Act Ref: 8768(d) 8771 8773 Other: _____
- Corner/Monument: Left as found Established Rebuilt Pre-Construction
 Found and tagged Reestablished Referenced Post-Construction

Narrative of corner identified and monument as found, set, reset, replaced, or removed:
 See sheet #2 for description(s) :

SURVEYOR'S STATEMENT

This Corner Record was prepared by me or under my direction in conformance with
 the Professional Land Surveyors' Act on MAY 5 2021
 Signed David L. Lindell P.L.S. or R.C.E. No. LS 4016



COUNTY SURVEYOR'S STATEMENT

This Corner Record was received _____,
 and examined and filed _____,
 Signed _____ P.L.S. or R.C.E. No. _____
 Title _____

County Surveyor's Comment