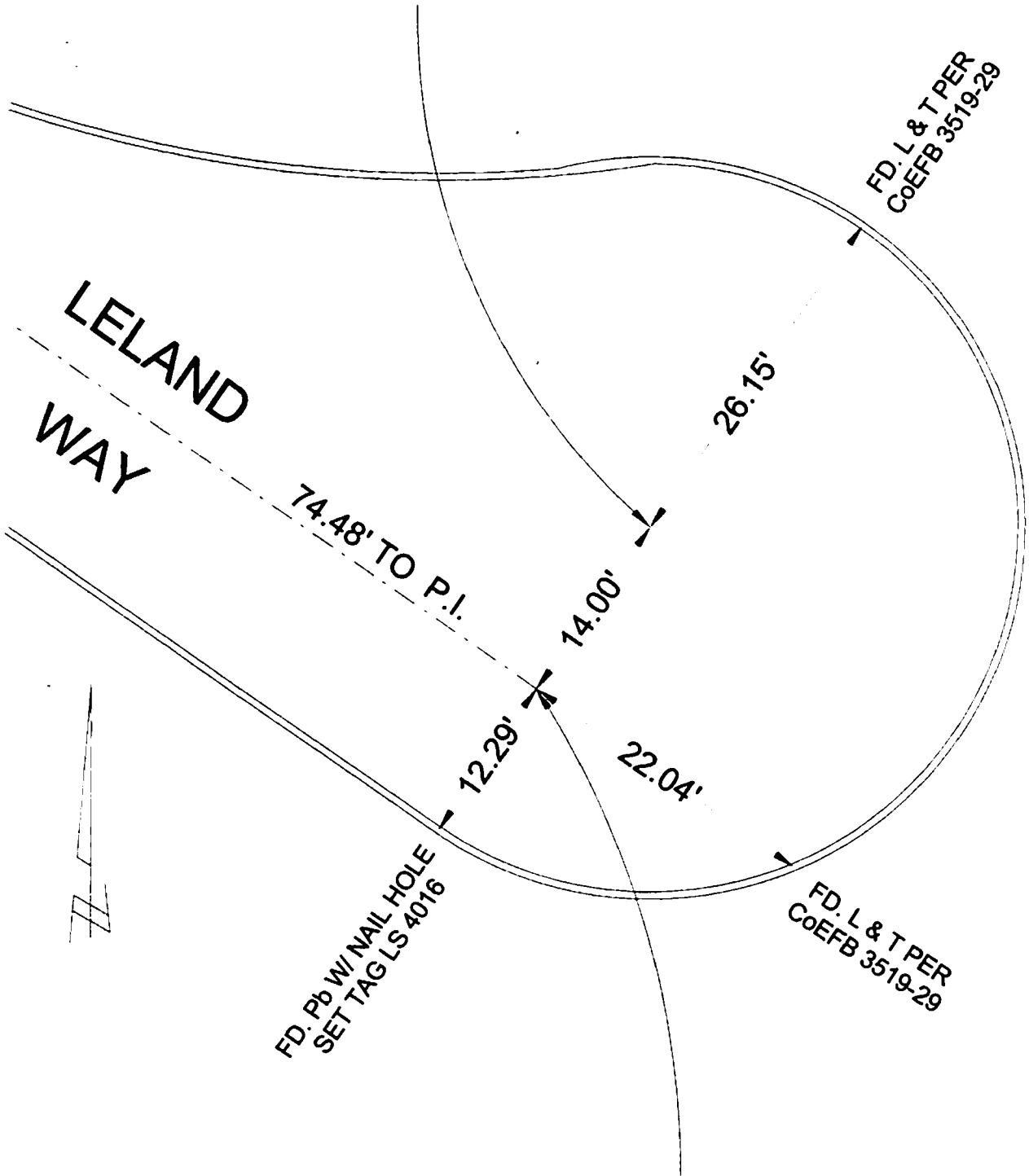


SET S & W LS 4016
AT RECORD DISTANCE
FROM ANGLE POINT



SET S & W LS 4016 BY INTERSECTION
OF LINE BETWEEN NE & SW TIES AND
LINE FROM PROD TO THE SE AND THE P.I.

CORNER RECORD

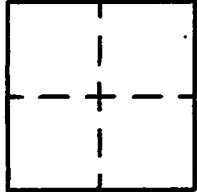
Agency Index _____

Document Number _____

City of BURBANK

County of LOS ANGELES, California

Brief Legal Description LELAND WAY CUL-DE-SAC SE/O BROADWAY



CORNER TYPE

- Government Corner
- Meander
- Rancho
- Control
- Property
- Other

Date of Survey 9/25/20

Date of Survey _____

COORDINATES (Optional)

N. _____ E. _____

Elevation _____

Units Metric U.S. Survey Foot

Horizontal Datum _____

Zone _____ Epoch Date _____

Vertical Datum _____

Complies with Public Resources Code §§6801-6819

Complies with Public Resources Code §§6990-6992

PLS Act Ref: 8768(d) 8771 8773 Other: _____

Corner/Monument: Left as found Established Rebuilt Pre-Construction

Found and tagged Reestablished Referenced Post-Construction

Narrative of corner identified and monument as found, set, reset, replaced, or removed:

See sheet #2 for description(s) :

SURVEYOR'S STATEMENT

This Corner Record was prepared by me or under my direction in conformance with

the Professional Land Surveyors' Act on SEPTEMBER 28, 2020

Signed David L. Lindell P.L.S. or R.C.E. No. LS 4016



COUNTY SURVEYOR'S STATEMENT

This Corner Record was received _____

and examined and filed _____

Signed _____ P.L.S. or R.C.E. No. _____

Title _____

County Surveyor's Comment