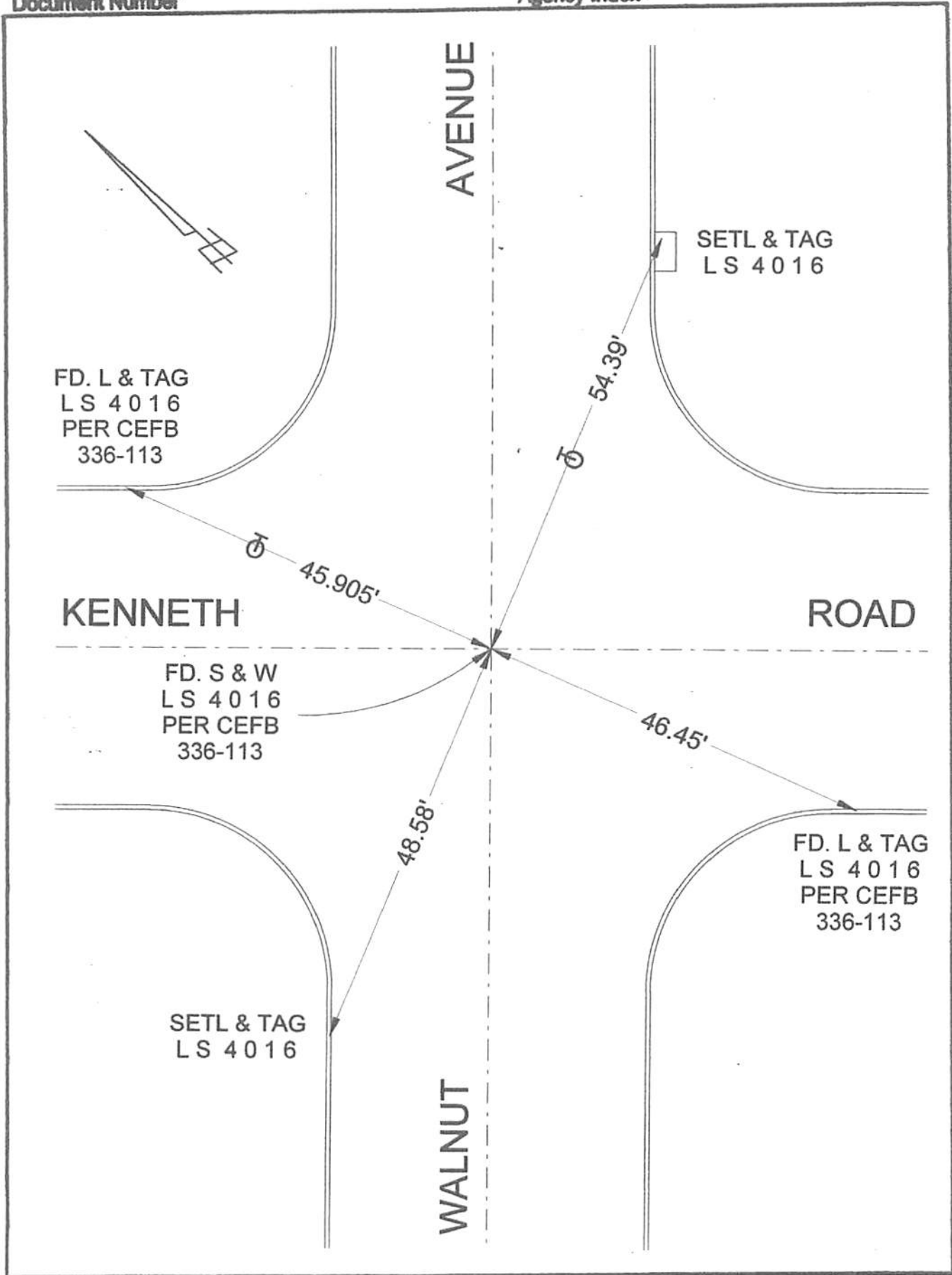


Document Number

Agency Index



CORNER RECORD

Agency Index _____
Document Number _____

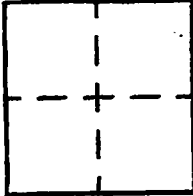
City of BURBANK

County of LOS ANGELES, California

Brief Legal Description KENNETH ROAD & WALNUT AVENUE

CORNER TYPE

COORDINATES (Optional)



- Government Corner
- Meander
- Rancho
- Control
- Property
- Other

1/25/20

Date of Survey _____

N. _____ E. _____
 Elevation _____
 Units Metric U.S. Survey Foot
 Horizontal Datum _____
 Zone _____ Epoch Date _____
 Vertical Datum _____
 Complies with Public Resources Code §§8801-8818
 Complies with Public Resources Code §§8820-8802

PLS Act Ref: 8768(d) 8771 8773 Other: _____

Corner/
Monument: Left as found Established Rebuilt Pre-Construction
 Found and tagged Reestablished Referenced Post-Construction

Narrative of corner identified and monument as found, set, reset, replaced, or removed:
 See sheet #2 for description(s) :

SURVEYOR'S STATEMENT

This Corner Record was prepared by me or under my direction in conformance with
 the Professional Land Surveyors' Act on FEBRUARY 5 2020
 Signed David L. Lindell P.L.S. or R.C.E. No. LS 4016



COUNTY SURVEYOR'S STATEMENT

This Corner Record was received _____,
 and examined and filed _____,
 Signed _____ P.L.S. or R.C.E. No. _____
 Title _____
 County Surveyor's Comment _____