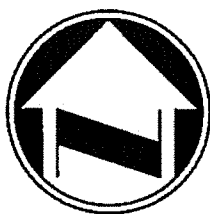
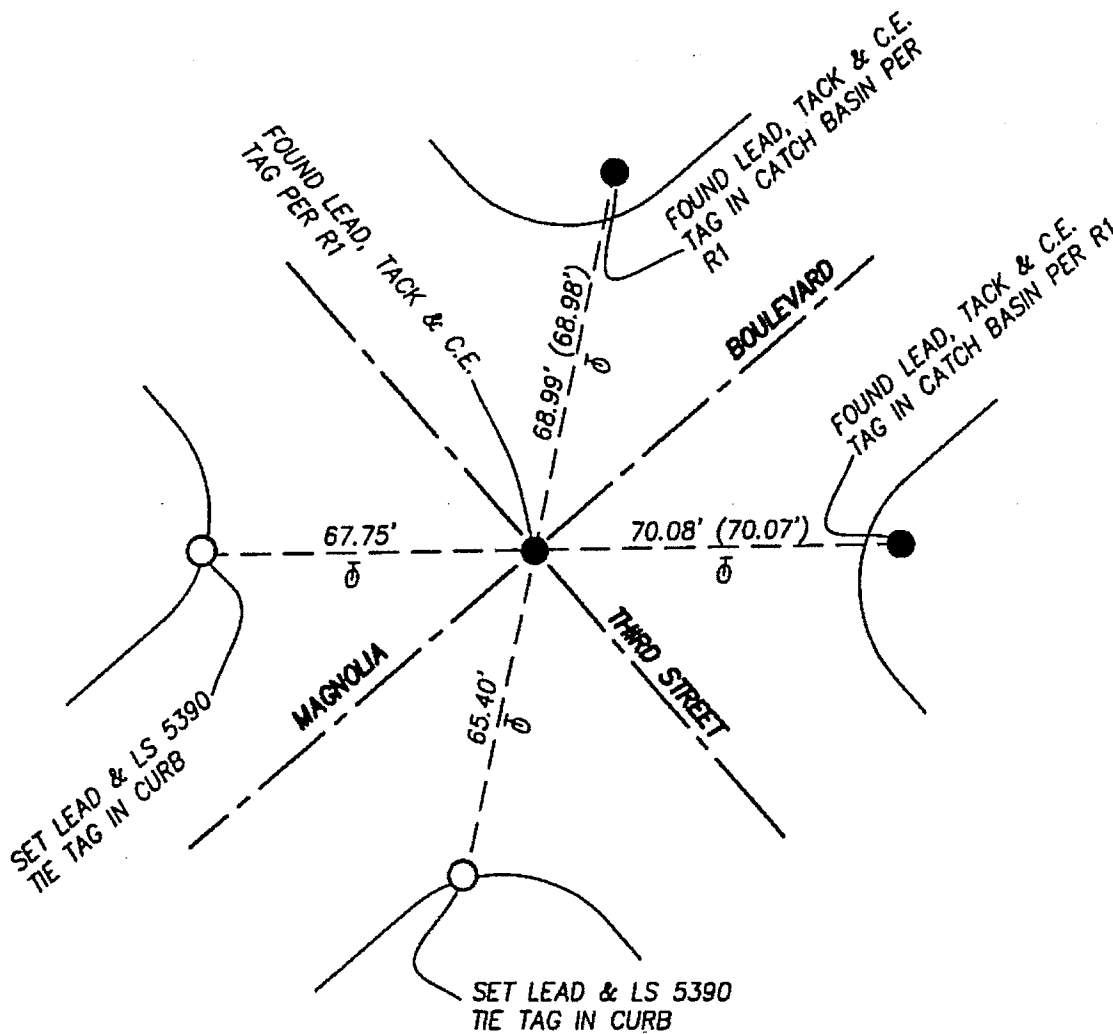


FB 340 P.3



NOT TO SCALE

● FOUND MONUMENT AS NOTED

○ SET MONUMENT AS NOTED

R1 = P.W.F.B. 1719/637-638

CORNER RECORD

PWFB 1719

1614

Agency Index _____

Document Number _____

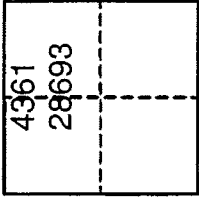
City of BURBANK

County of LOS ANGELES, California

Brief Legal Description MAGNOLIA BLVD. & THIRD STREET

CORNER TYPE

COORDINATES (Optional)



Government Corner Control
 Meander Property
 Rancho Other

N. _____ E. _____

Elevation _____

Units Metric U.S. Survey Foot

Horizontal Datum _____

Zone _____ Epoch Date _____

Vertical Datum _____

Date of Survey 1-11-2018

Complies with Public Resources Code §§8801-8819

Complies with Public Resources Code §§8890-8902

PLS Act Ref: 8765(d)

8771

8773

Other.

Corner/ Monument: Left as found

Established

Rebuilt

Pre-Construction

Found and tagged

Reestablished

Referenced

Post-Construction

Narrative of corner identified and monument as found, set, reset, replaced, or removed:

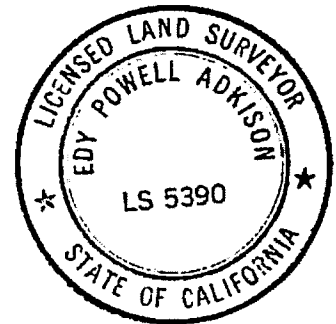
See sheet #2 for description

THESE TIES ARE FOR THE PURPOSE OF PERPETUATING THE FOUND MONUMENTATION PURSUANT TO THE PLS ACT SECTION 8771. NO CLAIM IS MADE AS TO THE RELATIONSHIP OF THE POINTS OR LINES SHOWN HEREON TO THE TRUE BOUNDARY LOCATION.

SURVEYOR'S STATEMENT

This Corner Record was prepared by me or under my direction in conformance with the Professional Land Surveyors' Act on MARCH 20, 2018

Signed [Signature] P.L.S. or R.C.E. No. 5390



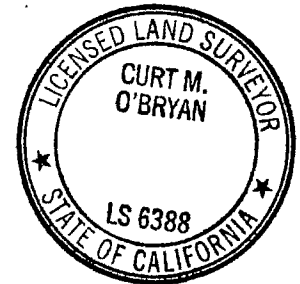
COUNTY SURVEYOR'S STATEMENT

This Corner Record was received FEB 06 2018 MAR 27 2018

and examined and filed APR 17 2018

Signed [Signature] P.L.S. or R.C.E. No. 6388

Title DEPUTY COUNTY SURVEYOR



County Surveyor's Comment _____