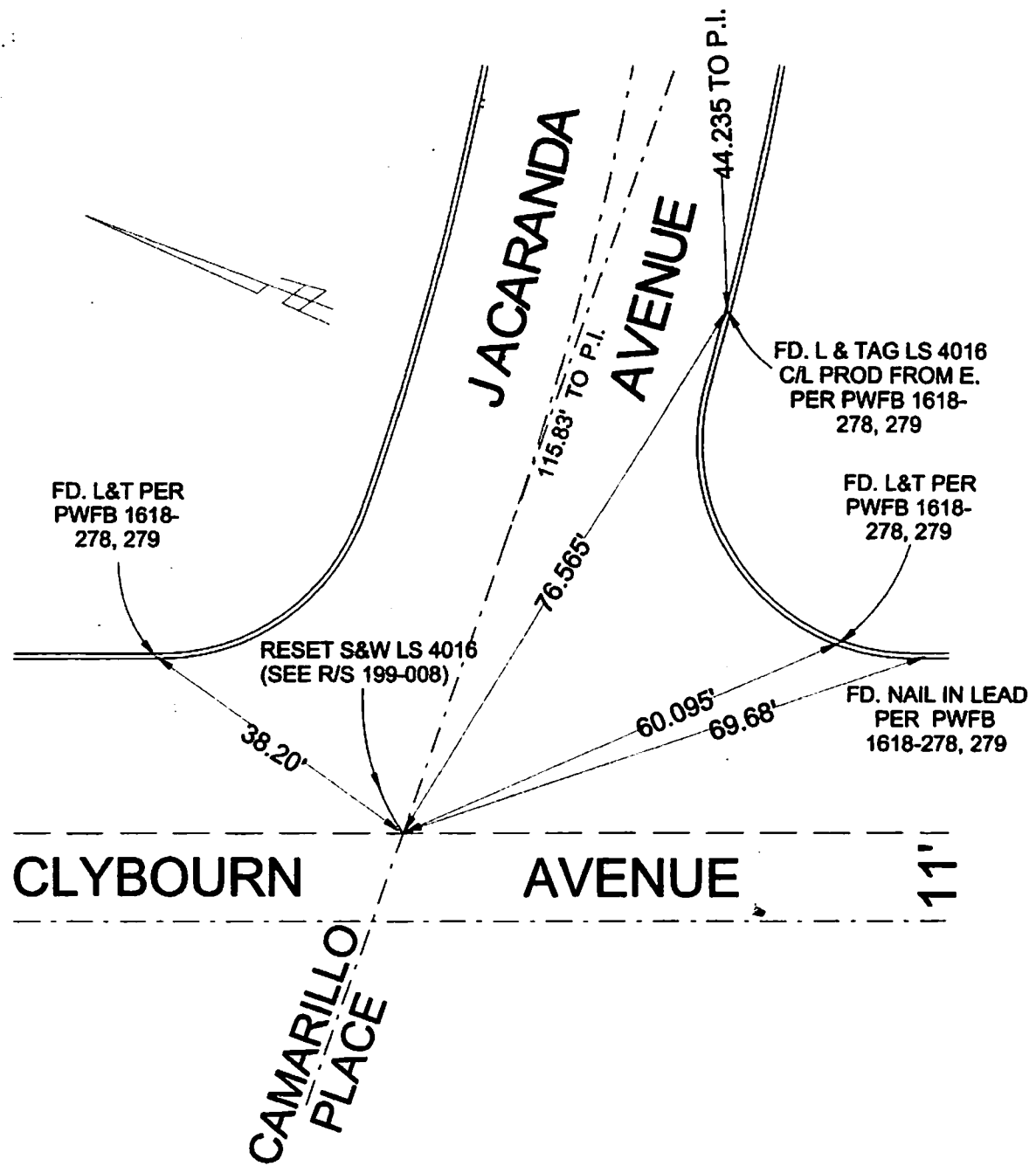


FB 340 P. 2B1

Document Number

Agency Index



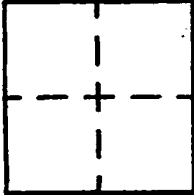
CORNER RECORD

Agency Index _____
Document Number _____

City of BURBANK County of LOS ANGELES, California
Brief Legal Description CLYBOURN AVENUE & JACARANDA AVENUE

CORNER TYPE

COORDINATES (Optional)



- Government Corner
- Meander
- Rancho
- Control
- Property
- Other

8/02/19

Date of Survey _____

N. _____ E. _____

Elevation _____

Units Metric U.S. Survey Foot

Horizontal Datum _____

Zone _____ Epoch Date _____

Vertical Datum _____

Complies with Public Resources Code §§8901-8919

Complies with Public Resources Code §§8990-8992

PLS Act Ref: 8768(d) 8771 8773 Other: _____

Corner/Monument: Left as found Established Rebuilt Pre-Construction
 Found and tagged Reestablished Referenced Post-Construction

Narrative of corner identified and monument as found, set, reset, replaced, or removed:
 See sheet #2 for description(s) :

SURVEYOR'S STATEMENT

This Corner Record was prepared by me or under my direction in conformance with
 the Professional Land Surveyors' Act on AUGUST 7, 2019
 Signed David L. Lindell P.L.S. or R.C.E. No. LS 4016



COUNTY SURVEYOR'S STATEMENT

This Corner Record was received _____,
 and examined and filed _____,
 Signed _____ P.L.S. or R.C.E. No. _____
 Title _____
 County Surveyor's Comment _____

A.P.N.: N/A

T.G. 563-C-3