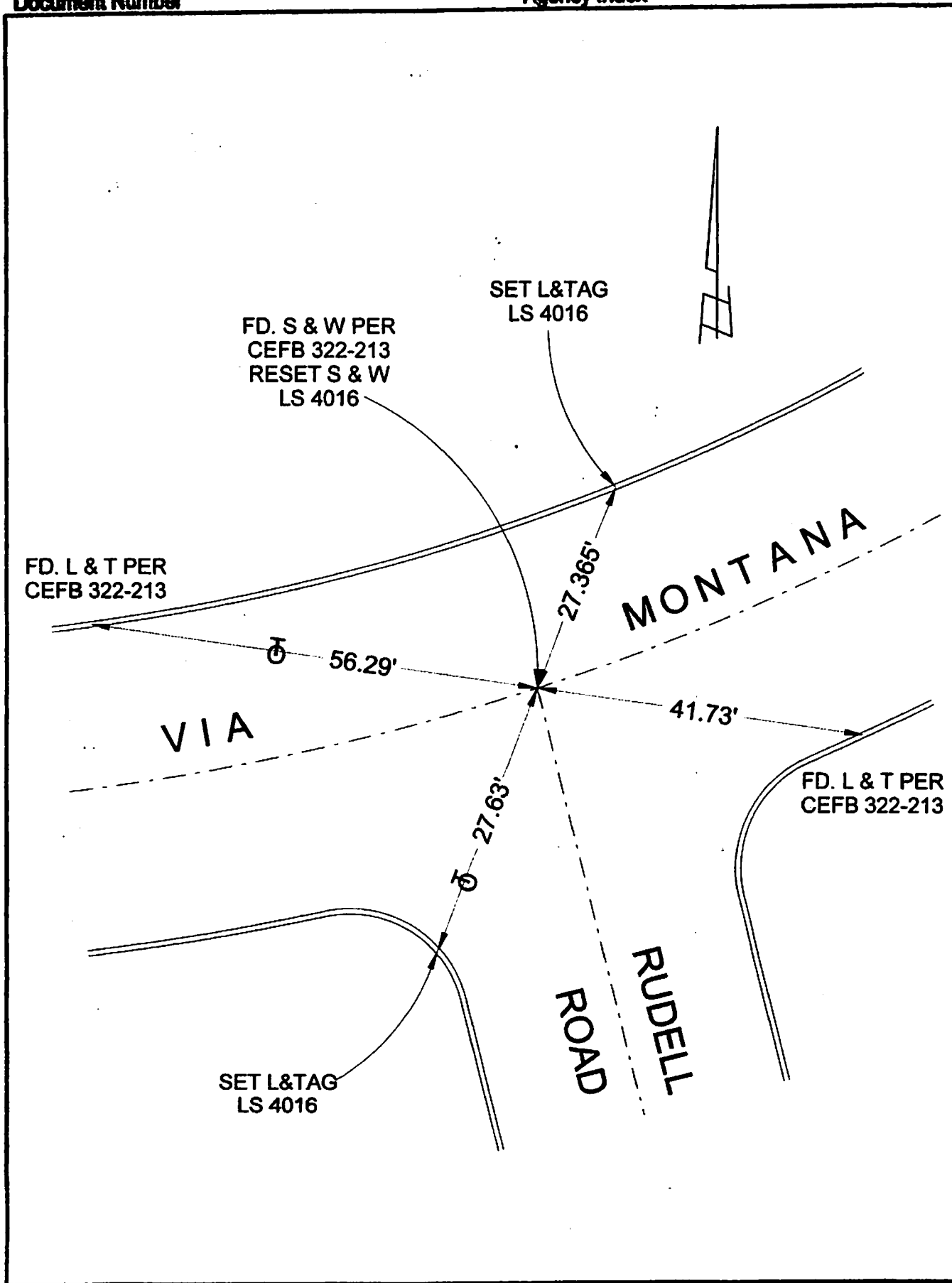


Document Number

Agency Index

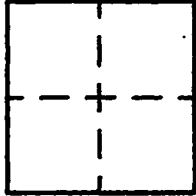


CORNER RECORD

Agency Index _____
Document Number _____
County of LOS ANGELES, California
Brief Legal Description VIA MONTANA & RUDELL ROAD

City of BURBANK

Brief Legal Description VIA MONTANA & RUDELL ROAD



CORNER TYPE

- Government Corner
- Moander
- Rancho
- Control
- Property
- Other

8/26/19

Date of Survey _____

COORDINATES (Optional)

N. _____ E. _____

Elevation _____

Units Metric U.S. Survey Foot

Horizontal Datum _____

Zone _____ Epoch Date _____

Vertical Datum _____

Complies with Public Resources Code §§5501-5510

Complies with Public Resources Code §§5520-5502

PLS Act Ref: 6768(d) 6771 6773 Other: _____

Corner/Monument: Left as found Established Rebuilt Pre-Construction
 Found and tagged Reestablished Referenced Post-Construction

Narrative of corner identified and monument as found, set, reset, replaced, or removed:

See sheet #2 for description(s) :

SURVEYOR'S STATEMENT

This Corner Record was prepared by me or under my direction in conformance with

the Professional Land Surveyors' Act on AUGUST 27, 2019

Signed David L. Lindell P.L.S. or R.C.E. No. LS 4016



COUNTY SURVEYOR'S STATEMENT

This Corner Record was received _____

and examined and filed _____

Signed _____ P.L.S. or R.C.E. No. _____

Title _____

County Surveyor's Comment

A.P.N.: N/A

T.G. 534-A-5