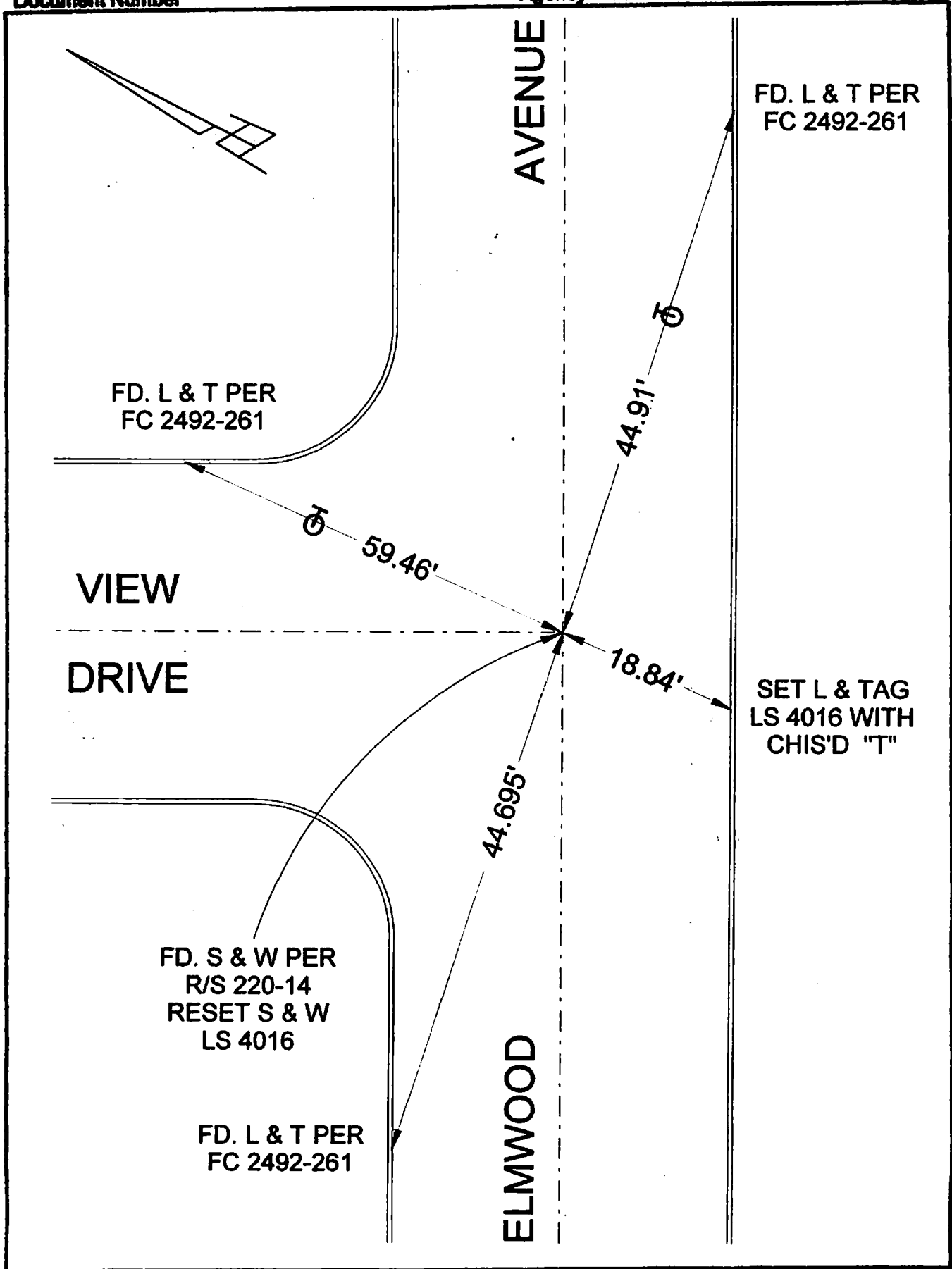


Document Number

Agency Index

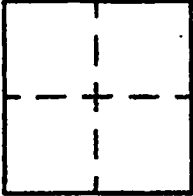


# CORNER RECORD

Agency Index \_\_\_\_\_  
Document Number \_\_\_\_\_  
County of LOS ANGELES, California

City of BURBANK

Brief Legal Description ELMWOOD AVENUE & VIEW DRIVE



### CORNER TYPE

- Government Corner
- Meander
- Rancho
- Control
- Property
- Other

8/23/19

Date of Survey \_\_\_\_\_

### COORDINATES (Optional)

N. \_\_\_\_\_ E. \_\_\_\_\_

Elevation \_\_\_\_\_

Units  Metric  U.S. Survey Foot

Horizontal Datum \_\_\_\_\_

Zone \_\_\_\_\_ Epoch Date \_\_\_\_\_

Vertical Datum \_\_\_\_\_

Complies with Public Resources Code §§8901-8919

Complies with Public Resources Code §§8960-8962

PLS Act Ref:  8768(d)  8771  8773  Other: \_\_\_\_\_

Corner/Monument:  Left as found  Established  Rebuilt  Pre-Construction

Found and tagged  Reestablished  Referenced  Post-Construction

Narrative of corner identified and monument as found, set, reset, replaced, or removed:

See sheet #2 for description(s) :

### SURVEYOR'S STATEMENT

This Corner Record was prepared by me or under my direction in conformance with

the Professional Land Surveyors' Act on AUGUST 27, 2019

Signed David L Lindell P.L.S. or R.C.E. No. LS 4016



### COUNTY SURVEYOR'S STATEMENT

This Corner Record was received \_\_\_\_\_

and examined and filed \_\_\_\_\_

Signed \_\_\_\_\_ P.L.S. or R.C.E. No. \_\_\_\_\_

Title \_\_\_\_\_

County Surveyor's Comment

A.P.N.: N/A

T.G. 534-A-6