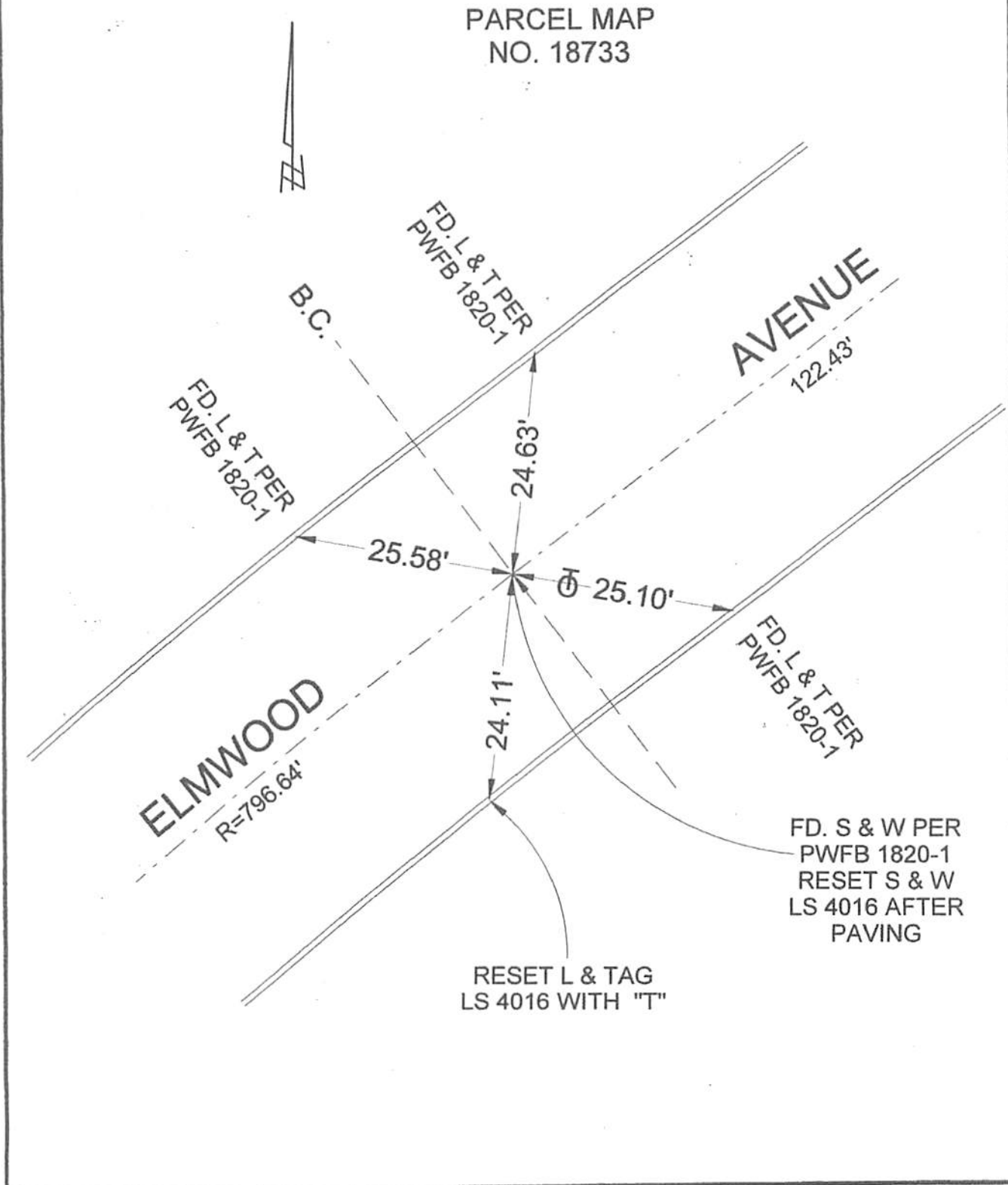


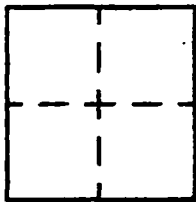
PARCEL MAP  
NO. 18733



# CORNER RECORD

Agency Index \_\_\_\_\_  
Document Number \_\_\_\_\_

City of BURBANK County of LOS ANGELES, California  
Brief Legal Description ELMWOOD AVENUE & B.C. 190± SW/O SUNSET CANYON DRIVE



### CORNER TYPE

- Government Corner
- Meander
- Rancho
- Control
- Property
- Other

Date of Survey 8/21/19

### COORDINATES (Optional)

N. \_\_\_\_\_ E. \_\_\_\_\_  
Elevation \_\_\_\_\_  
Units  Metric  U.S. Survey Foot  
Horizontal Datum \_\_\_\_\_  
Zone \_\_\_\_\_ Epoch Date \_\_\_\_\_  
Vertical Datum \_\_\_\_\_  
 Complies with Public Resources Code §§6801-6819  
 Complies with Public Resources Code §§6880-6902

PLS Act Ref:  8783(d)  8771  8773  Other: \_\_\_\_\_

Corner/Monument:  Left as found  Established  Rebuilt  Pre-Construction  
 Found and tagged  Reestablished  Referenced  Post-Construction

Narrative of corner identified and monument as found, set, reset, replaced, or removed:  
 See sheet #2 for description(s) :

### SURVEYOR'S STATEMENT

This Corner Record was prepared by me or under my direction in conformance with  
 the Professional Land Surveyors' Act on AUGUST 27 2019  
 Signed David L. Lindell P.L.S. or R.C.E. No. LS 4016



### COUNTY SURVEYOR'S STATEMENT

This Corner Record was received \_\_\_\_\_,  
 and examined and filed \_\_\_\_\_.  
 Signed \_\_\_\_\_ P.L.S. or R.C.E. No. \_\_\_\_\_  
 Title \_\_\_\_\_  
 County Surveyor's Comment \_\_\_\_\_

A.P.N.: N/A

T.G. 534-A-6