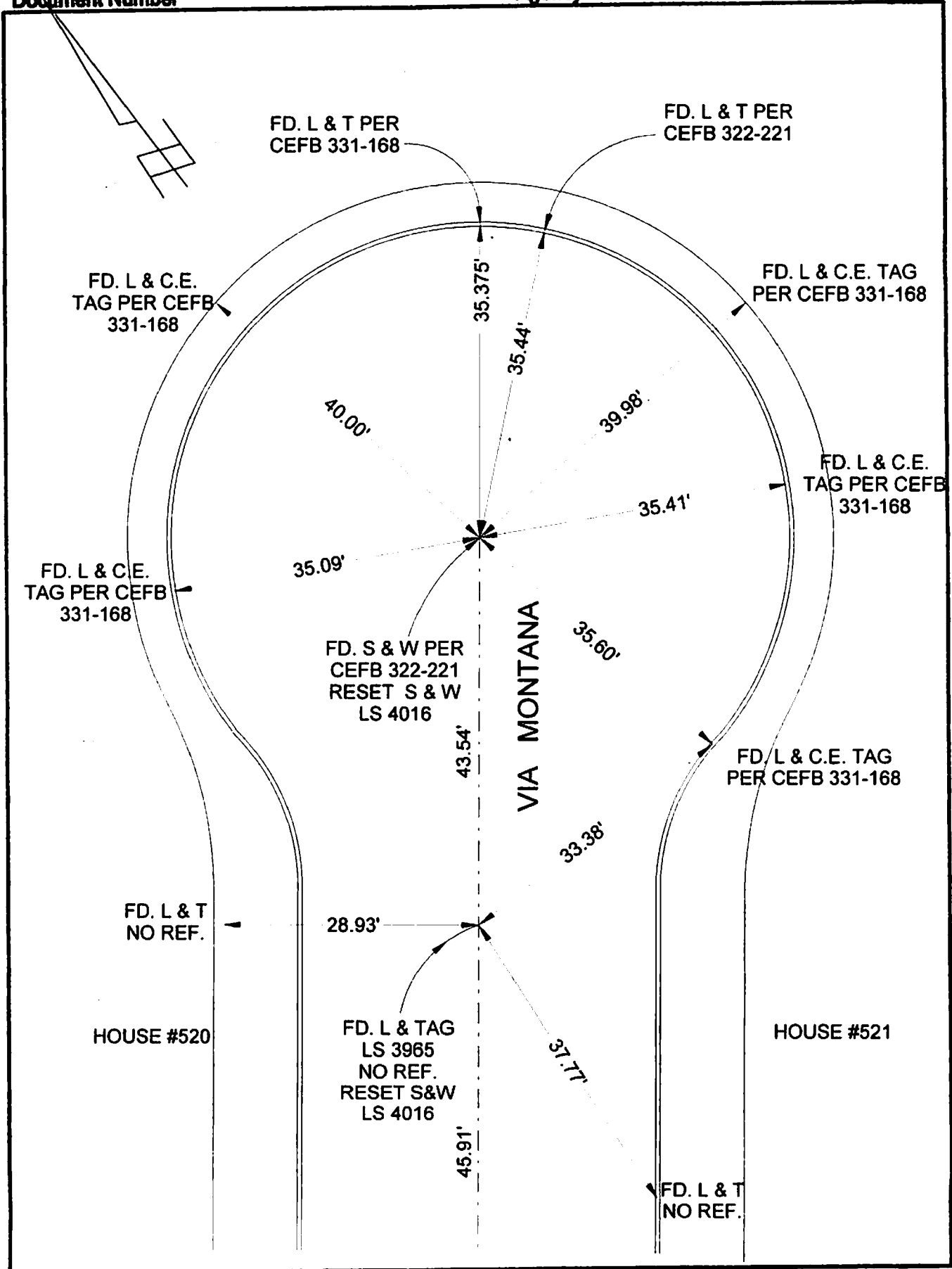


Document Number

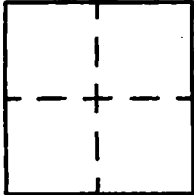
Agency Index



# CORNER RECORD

Agency Index \_\_\_\_\_  
Document Number \_\_\_\_\_  
County of LOS ANGELES, California

City of BURBANK  
Brief Legal Description VIA MONTANA TERMINUS



### CORNER TYPE

- Government Corner
- Meander
- Rancho
- Control
- Property
- Other

8/23/19

Date of Survey \_\_\_\_\_

### COORDINATES (Optional)

N. \_\_\_\_\_ E. \_\_\_\_\_

Elevation \_\_\_\_\_

Units  Metric  U.S. Survey Foot

Horizontal Datum \_\_\_\_\_

Zone \_\_\_\_\_ Epoch Date \_\_\_\_\_

Vertical Datum \_\_\_\_\_

Complies with Public Resources Code §§8801-8816

Complies with Public Resources Code §§8890-8902

PLS Act Ref:  8765(d)  8771  8775  Other: \_\_\_\_\_

Corner/Monument:  Left as found  Established  Rebuilt  Pre-Construction

Found and tagged  Reestablished  Referenced  Post-Construction

Narrative of corner identified and monument as found, set, reset, replaced, or removed:  
 See sheet #2 for description(s) :

### SURVEYOR'S STATEMENT

This Corner Record was prepared by me or under my direction in conformance with  
the Professional Land Surveyors' Act on AUGUST 27, 2019  
Signed David L. Lindell P.L.S. or R.C.E. No. LS 4016



### COUNTY SURVEYOR'S STATEMENT

This Corner Record was received \_\_\_\_\_,  
and examined and filed \_\_\_\_\_,  
Signed \_\_\_\_\_ P.L.S. or R.C.E. No. \_\_\_\_\_  
Title \_\_\_\_\_

County Surveyor's Comment

A.P.N.: N/A

T.G. 534-A-5