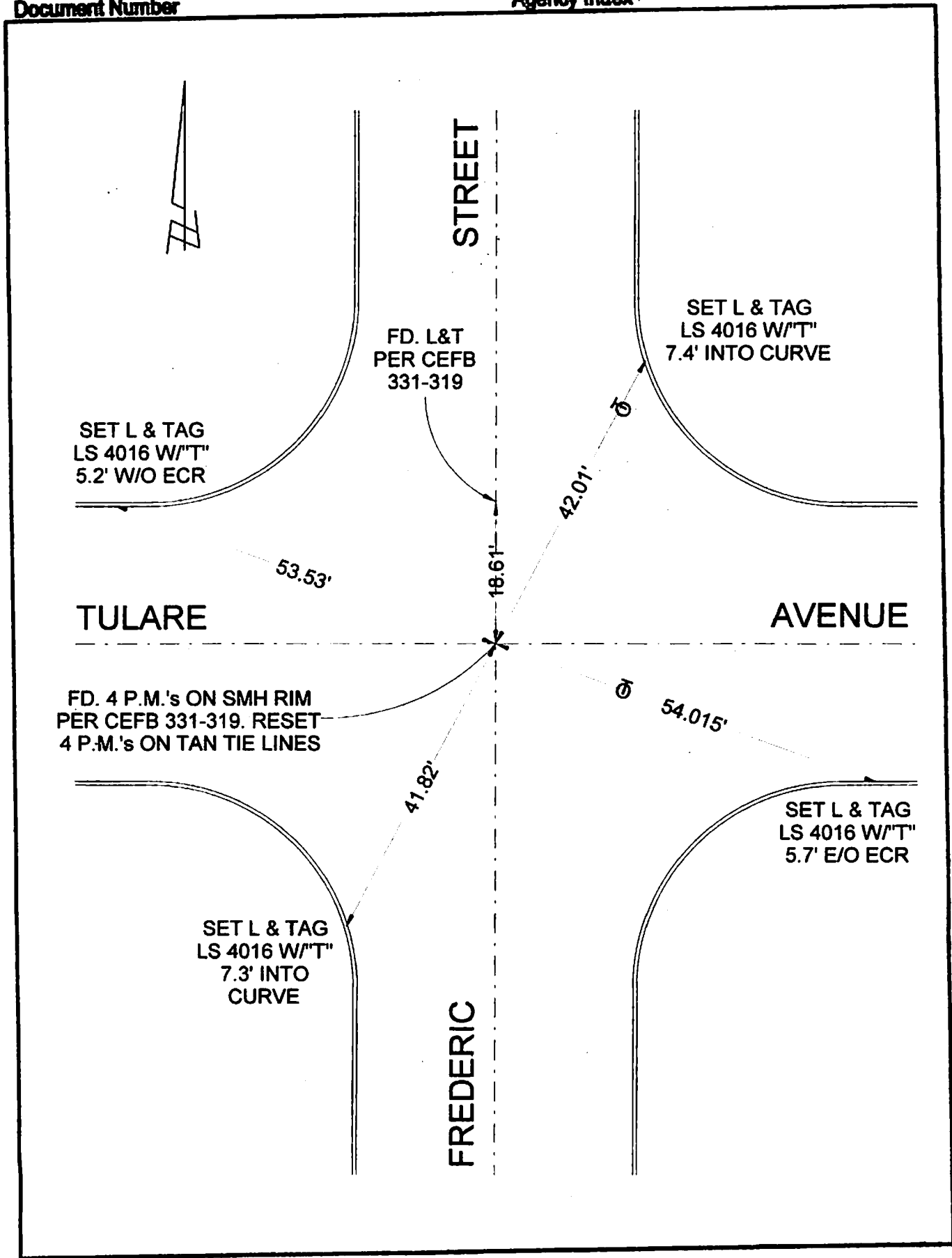


FB 340 P.219

Document Number

Agency Index



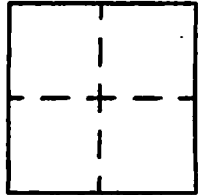
CORNER RECORD

Agency Index _____
Document Number _____

City of BURBANK

County of LOS ANGELES, California

Brief Legal Description TULARE AVENUE & FREDERIC STREET



CORNER TYPE

- Government Corner
- Meander
- Rancho
- Control
- Property
- Other

Date of Survey 5/15/21

COORDINATES (Optional)

N. _____ E. _____

Elevation _____

Units Metric U.S. Survey Foot

Horizontal Datum _____

Zone _____ Epoch Date _____

Vertical Datum _____

Complies with Public Resources Code §§6801-6819

Complies with Public Resources Code §§6890-6902

PLS Act Ref: 8762(d) 8771 8773 Other: _____

Corner/Monument: Left as found Established Rebuilt Pre-Construction
 Found and tagged Reestablished Referenced Post-Construction

Narrative of corner identified and monument as found, set, reset, replaced, or removed:
 See sheet #2 for description(s) :

SURVEYOR'S STATEMENT

This Corner Record was prepared by me or under my direction in conformance with
 the Professional Land Surveyors' Act on MAY 17 2021
 Signed David L. Lindell P.L.S. or R.C.E. No. LS 4016



COUNTY SURVEYOR'S STATEMENT

This Corner Record was received _____,
 and examined and filed _____,
 Signed _____ P.L.S. or R.C.E. No. _____
 Title _____

County Surveyor's Comment