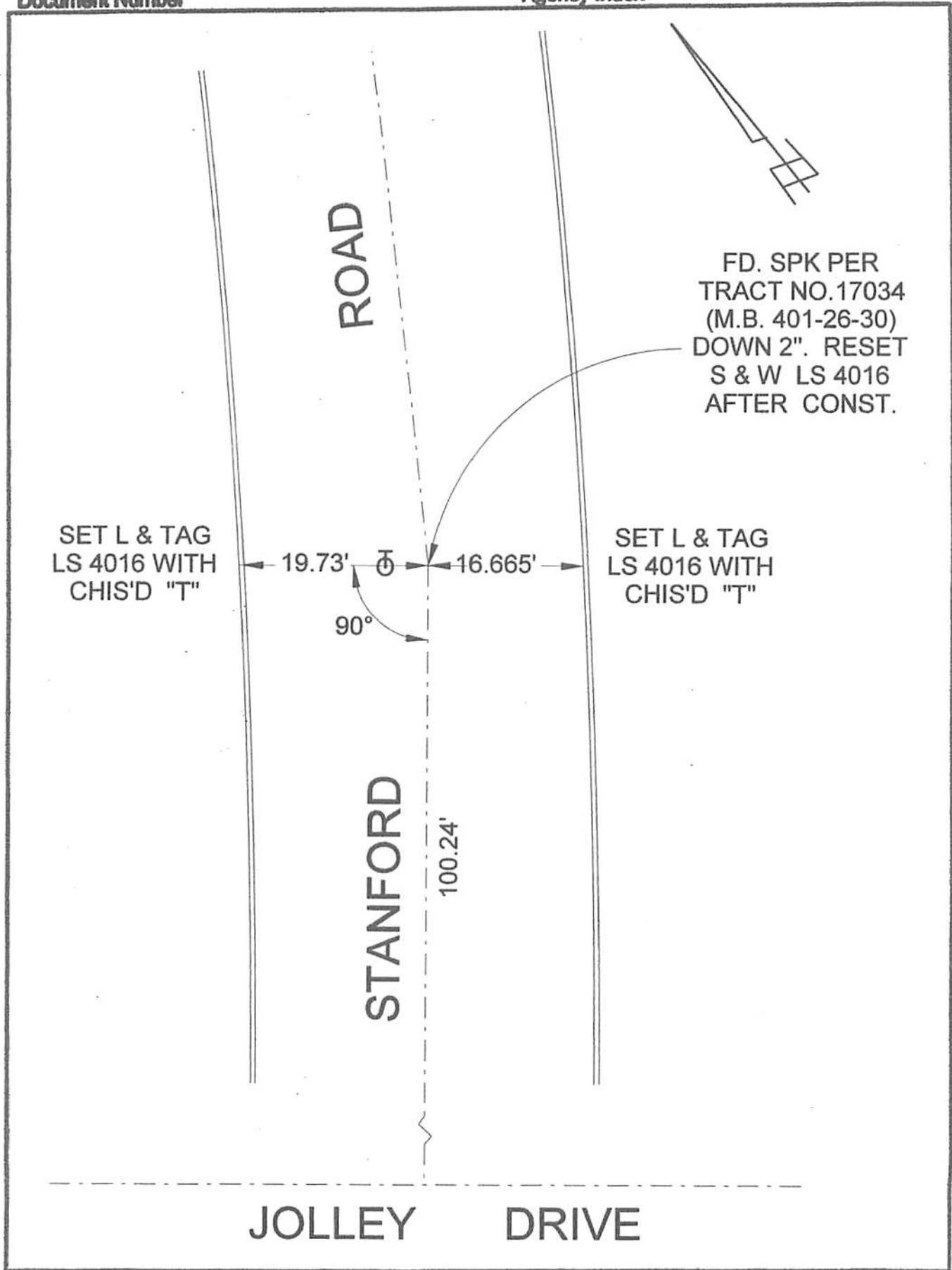


FB 340 P. 185

Document Number

Agency Index



# CORNER RECORD

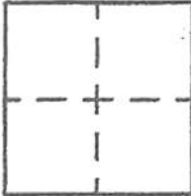
Agency Index \_\_\_\_\_

Document Number \_\_\_\_\_

City of BURBANK

County of LOS ANGELES, California

Brief Legal Description STANFORD ROAD P.I. NE/O JOLLEY DRIVE



### CORNER TYPE

- Government Corner
- Meander
- Rancho
- Control
- Property
- Other

7/25/19

Date of Survey \_\_\_\_\_

### COORDINATES (Optional)

N. \_\_\_\_\_ E. \_\_\_\_\_

Elevation \_\_\_\_\_

Units  Metric  U.S. Survey Foot

Horizontal Datum \_\_\_\_\_

Zone \_\_\_\_\_ Epoch Date \_\_\_\_\_

Vertical Datum \_\_\_\_\_

Complies with Public Resources Code §§8801-8819

Complies with Public Resources Code §§8800-8802

PLS Act Ref:  8765(d)  8771  8773  Other: \_\_\_\_\_

Corner/Monument:  Left as found  Established  Rebuilt  Pre-Construction

Found and tagged  Reestablished  Referenced  Post-Construction

Narrative of corner identified and monument as found, set, reset, replaced, or removed:

See sheet #2 for description(s) :

### SURVEYOR'S STATEMENT

This Corner Record was prepared by me or under my direction in conformance with

the Professional Land Surveyors' Act on JULY 26, 2019

Signed David L. Lindell P.L.S. or R.C.E. No. LS 4016



### COUNTY SURVEYOR'S STATEMENT

This Corner Record was received \_\_\_\_\_

and examined and filed \_\_\_\_\_

Signed \_\_\_\_\_ P.L.S. or R.C.E. No. \_\_\_\_\_

Title \_\_\_\_\_

County Surveyor's Comment \_\_\_\_\_

A.P.N.: N/A

T.G. 533-F-4