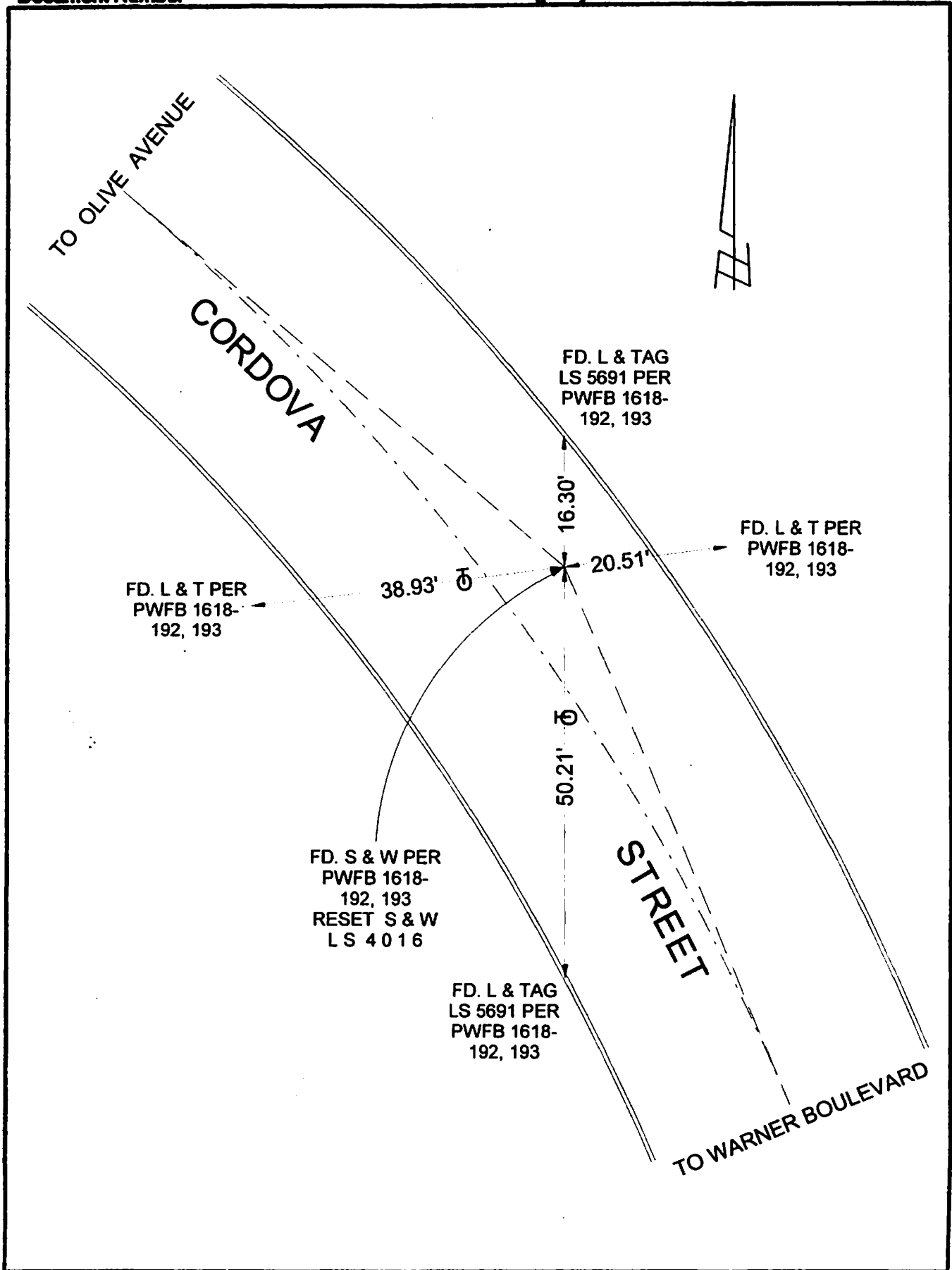


FB 340 P.149

Document Number

Agency Index



# CORNER RECORD

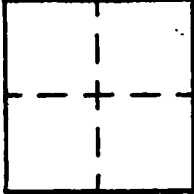
Agency Index \_\_\_\_\_  
Document Number \_\_\_\_\_  
County of LOS ANGELES, California

City of BURBANK

Brief Legal Description CORDOVA STREET P.I. S/O OLIVE AVENUE

### CORNER TYPE

### COORDINATES (Optional)



- Government Corner
- Meander
- Rancho
- Control
- Property
- Other

9/25/19

Date of Survey \_\_\_\_\_

N. \_\_\_\_\_ E. \_\_\_\_\_

Elevation \_\_\_\_\_

Units  Metric  U.S. Survey Foot

Horizontal Datum \_\_\_\_\_

Zone \_\_\_\_\_ Epoch Date \_\_\_\_\_

Vertical Datum \_\_\_\_\_

Complies with Public Resources Code §§6601-6619

Complies with Public Resources Code §§6880-6902

FLS Act Ref:  6765(d)  6771  6773  Other

Corner/Monument:  Left as found  Established  Rebuilt  Pre-Construction  
 Found and tagged  Reestablished  Referenced  Post-Construction

Narrative of corner identified and monument as found, set, reset, replaced, or removed:

See sheet #2 for description(s) :

### SURVEYOR'S STATEMENT

This Corner Record was prepared by me or under my direction in conformance with  
the Professional Land Surveyors' Act on SEPTEMBER 30, 2019  
Signed David L. Lindell P.L.S. or R.C.E. No. LS 4016



### COUNTY SURVEYOR'S STATEMENT

This Corner Record was received \_\_\_\_\_  
and examined and filed \_\_\_\_\_  
Signed \_\_\_\_\_ P.L.S. or R.C.E. No. \_\_\_\_\_  
Title \_\_\_\_\_  
County Surveyor's Comment \_\_\_\_\_

A.P.N.: N/A

T.G. 563-D-4