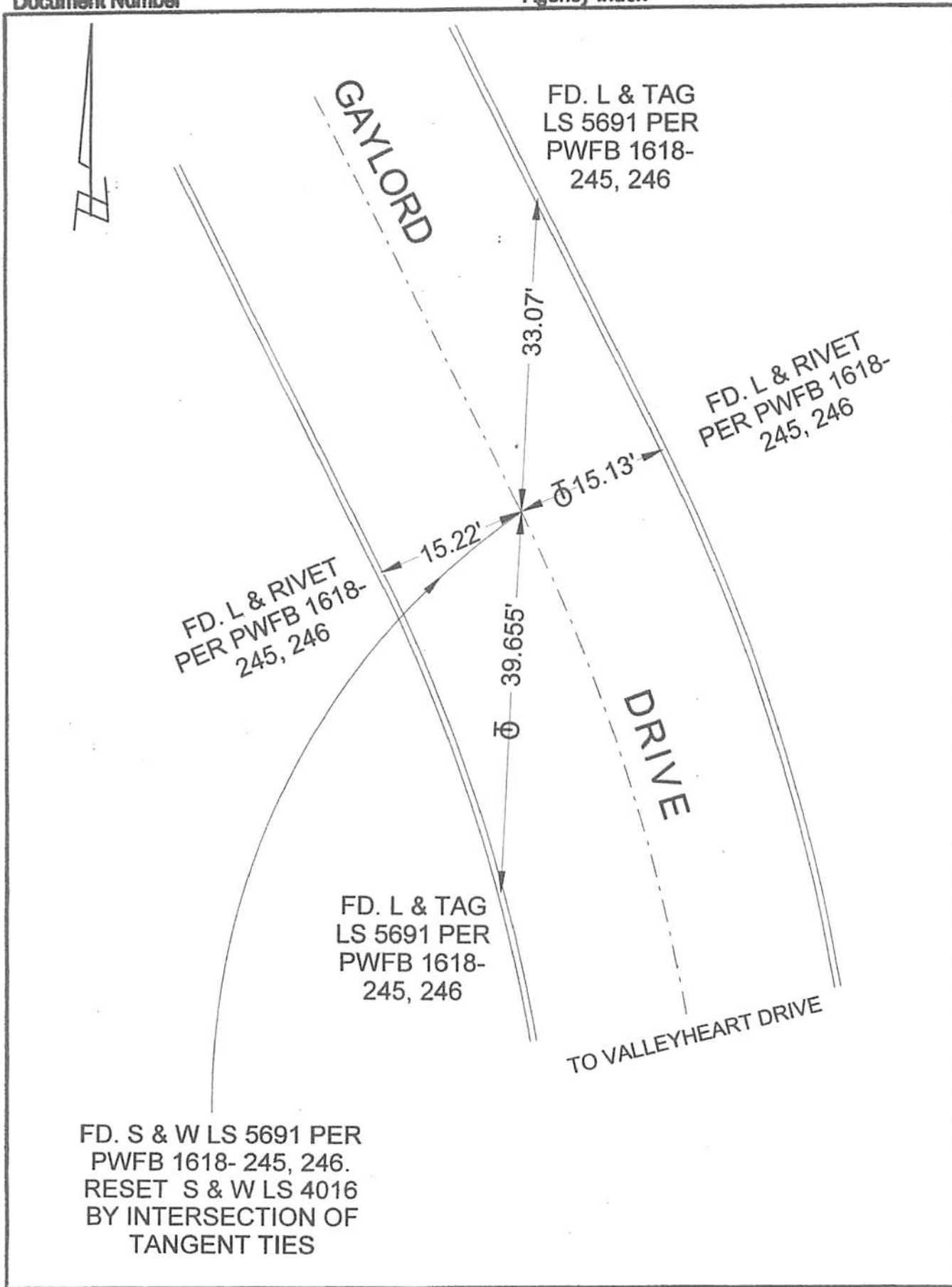


FB 340 P.139

Document Number

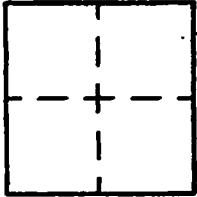
Agency Index



# CORNER RECORD

Agency Index \_\_\_\_\_  
Document Number \_\_\_\_\_

City of BURBANK County of LOS ANGELES, California  
Brief Legal Description GAYLORD DRIVE B.C. S/O RIVERSIDE DRIVE



### CORNER TYPE

- Government Corner
- Meander
- Rancho
- Control
- Property
- Other

9/4/19

Date of Survey \_\_\_\_\_

### COORDINATES (Optional)

N. \_\_\_\_\_ E. \_\_\_\_\_

Elevation \_\_\_\_\_

Units  Metric  U.S. Survey Foot

Horizontal Datum \_\_\_\_\_

Zone \_\_\_\_\_ Epoch Date \_\_\_\_\_

Vertical Datum \_\_\_\_\_

Complies with Public Resources Code §§8301-8319

Complies with Public Resources Code §§8320-8302

PLS Act Ref:  8766(d)  8771  8773  Other: \_\_\_\_\_

Corner/Monument:  Left as found  Established  Rebuilt  Pro-Construction  
 Found and tagged  Reestablished  Referenced  Post-Construction

Narrative of corner identified and monument as found, set, reset, replaced, or removed:  
 See sheet #2 for description(s) :

### SURVEYOR'S STATEMENT

This Corner Record was prepared by me or under my direction in conformance with  
 the Professional Land Surveyors' Act on SEPTEMBER 9, 2019  
 Signed David L. Lindell P.L.S. or R.C.E. No. LS 4016



### COUNTY SURVEYOR'S STATEMENT

This Corner Record was received \_\_\_\_\_,  
 and examined and filed \_\_\_\_\_,  
 Signed \_\_\_\_\_ P.L.S. or R.C.E. No. \_\_\_\_\_  
 Title \_\_\_\_\_

County Surveyor's Comment

A.P.N.: N/A

T.G. 563-E-4