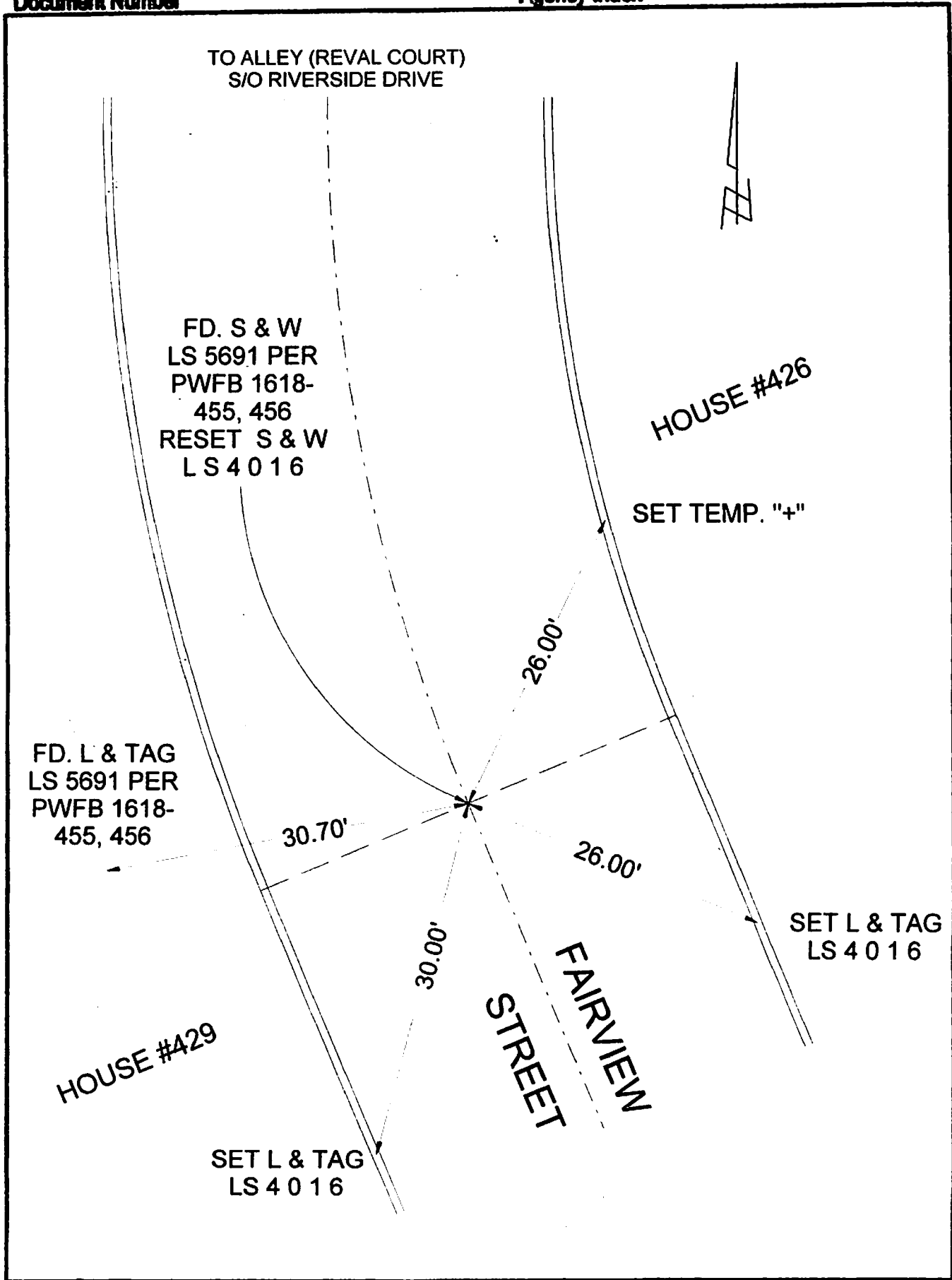


FB 340 P.113

Document Number

Agency Index



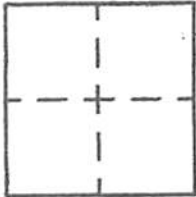
# CORNER RECORD

Agency Index \_\_\_\_\_  
Document Number \_\_\_\_\_

City of BURBANK

County of LOS ANGELES, California

Brief Legal Description FAIRVIEW STREET B.C. S/O ALLEY S/O RIVERSIDE DRIVE



### CORNER TYPE

- Government Corner
- Meander
- Rancho
- Control
- Property
- Other

Date of Survey 9/9/19

### COORDINATES (Optional)

N. \_\_\_\_\_ E. \_\_\_\_\_  
 Elevation \_\_\_\_\_  
 Units  Metric  U.S. Survey Foot  
 Horizontal Datum \_\_\_\_\_  
 Zone \_\_\_\_\_ Epoch Date \_\_\_\_\_  
 Vertical Datum \_\_\_\_\_  
 Complies with Public Resources Code §§8801-8819  
 Complies with Public Resources Code §§8890-8902

PLS Act Ref:  8768(d)  8771  8773  Other: \_\_\_\_\_

Corner/Monument:  Left as found  Established  Rebuilt  Pre-Construction  
 Found and tagged  Reestablished  Referenced  Post-Construction

Narrative of corner identified and monument as found, set, reset, replaced, or removed:  
 See sheet #2 for description(s) :

### SURVEYOR'S STATEMENT

This Corner Record was prepared by me or under my direction in conformance with  
 the Professional Land Surveyors' Act on SEPTEMBER 11, 2019  
 Signed David L. Lindell P.L.S. or R.C.E. No. LS 4016



### COUNTY SURVEYOR'S STATEMENT

This Corner Record was received \_\_\_\_\_,  
 and examined and filed \_\_\_\_\_  
 Signed \_\_\_\_\_ P.L.S. or R.C.E. No. \_\_\_\_\_  
 Title \_\_\_\_\_  
 County Surveyor's Comment \_\_\_\_\_

A.P.N.: N/A

T.G. 563-E-4