

CORNER RECORD

Agency Index _____

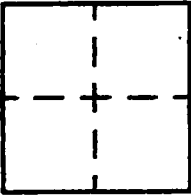
Document Number _____

City of BURBANK

County of LOS ANGELES, California

Brief Legal Description LELAND WAY P.O.L. SE/O

BROADWAY



CORNER TYPE

- Government Corner
- Meander
- Rancho
- Control
- Property
- Other

9/25/20

Date of Survey _____

COORDINATES (Optional)

N. _____ E. _____

Elevation _____

Units Metric U.S. Survey Foot

Horizontal Datum _____

Zone _____ Epoch Date _____

Vertical Datum _____

Complies with Public Resources Code §§6801-6810

Complies with Public Resources Code §§6880-6902

PLS Act Ref: 8708(d) 8771 8773 Other: _____

Corner/Monument: Left as found Established Rebuilt Pre-Construction

Found and tagged Reestablished Referenced Post-Construction

Narrative of corner identified and monument as found, set, reset, replaced, or removed:
 See sheet #2 for description(s) :

SURVEYOR'S STATEMENT

This Corner Record was prepared by me or under my direction in conformance with
the Professional Land Surveyors' Act on SEPTEMBER 28, 2020
Signed David L. Lindell P.L.S. or R.C.E. No. LS 4016



COUNTY SURVEYOR'S STATEMENT

This Corner Record was received _____
and examined and filed _____
Signed _____ P.L.S. or R.C.E. No. _____
Title _____

County Surveyor's Comment _____

SURVEY OF LA-4 Br-6
LELAND WAY

A24.001

130

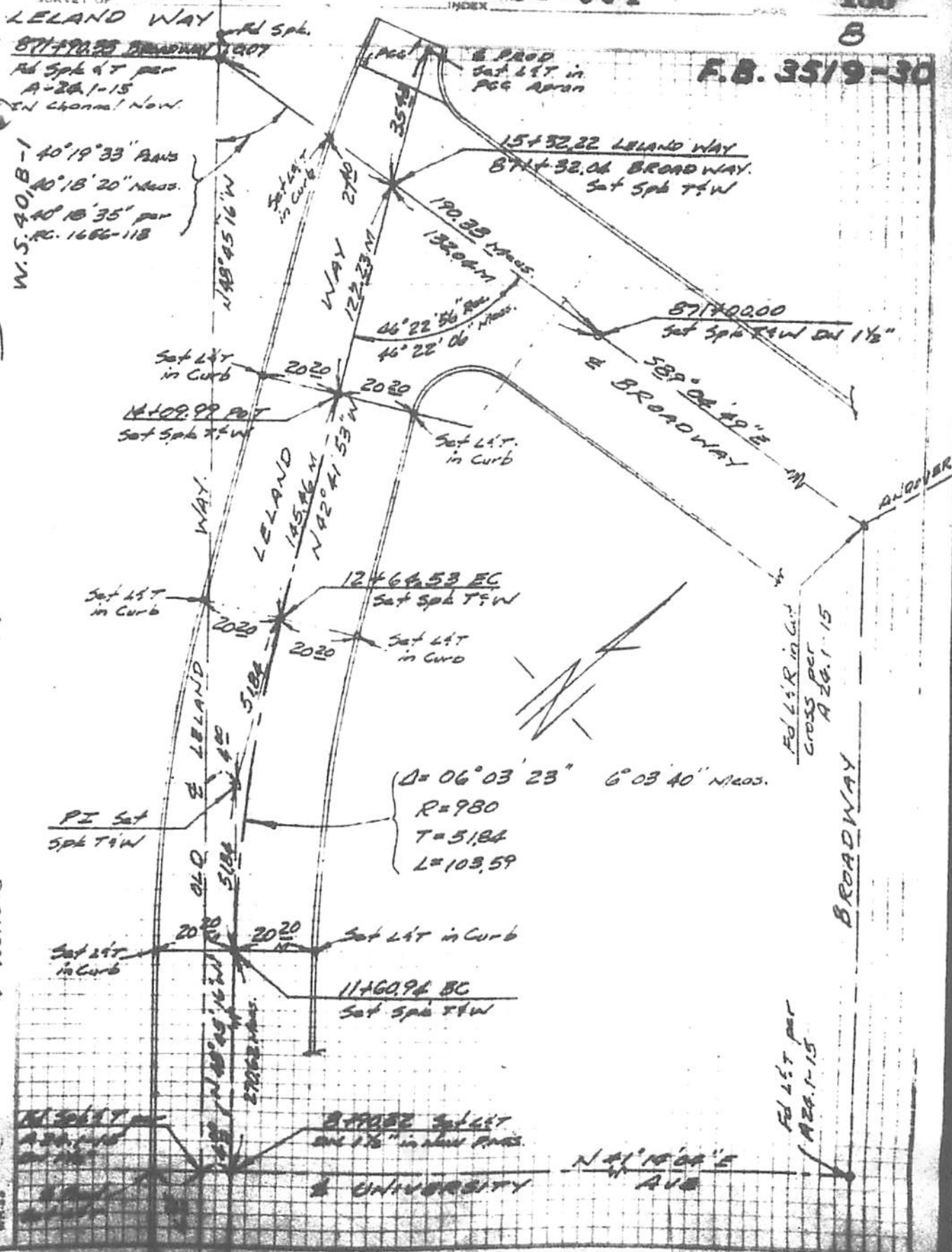
B

F.B. 3519-30

Ad Spk. of T per
A-24.1-15
EN Channel Now

W.S. 401B-1
40°19'33" Azms
40°18'20" Meas.
40°18'35" per
R.C. 1686-118

VII



PI Set
Spk T&W

$D = 06^{\circ}03'23''$ $6^{\circ}03'40''$ Meas.
 $R = 980$
 $T = 5184$
 $L = 103.59$

F&L's R in Curb
cross per
A 24.1-15

F&L's T per
A 24.1-15

SURVEY BY WALLACE, FAY DATE JUNE 1961
CP 46/16cc

104-52

UNIVERSITY
AVE