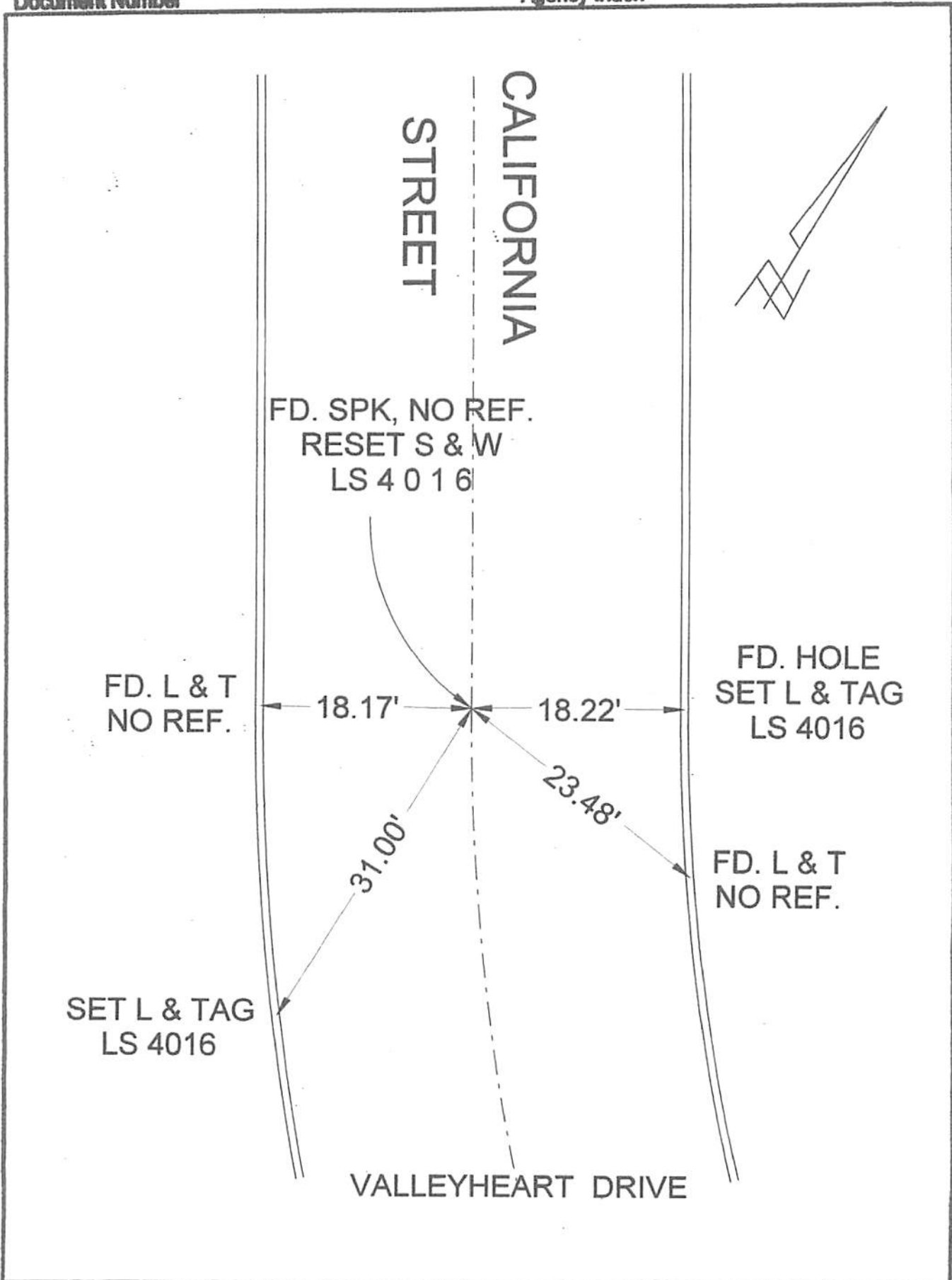


Document Number

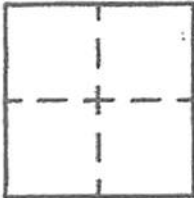
Agency Index



CORNER RECORD

Agency Index _____
Document Number _____
County of LOS ANGELES, California
NW/O VALLEYHEART DRIVE

City of BURBANK
Brief Legal Description CALIFORNIA STREET B.C.



CORNER TYPE

- Government Corner
- Meander
- Rancho
- Control
- Property
- Other

9/9/19

Date of Survey _____

COORDINATES (Optional)

N. _____ E. _____
Elevation _____
Units Metric U.S. Survey Foot
Horizontal Datum _____
Zone _____ Epoch Date _____
Vertical Datum _____
 Complies with Public Resources Code §§8801-8819
 Complies with Public Resources Code §§8800-8802

- PLS Act Ref: 8706(d) 8771 8773 Other: _____
- Corner/Monument: Left as found Established Rebuilt Pre-Construction
 Found and tagged Reestablished Referenced Post-Construction

Narrative of corner identified and monument as found, set, reset, replaced, or removed:
 See sheet #2 for description(s) :

SURVEYOR'S STATEMENT

This Corner Record was prepared by me or under my direction in conformance with
the Professional Land Surveyors' Act on SEPTEMBER 11, 2019
Signed David L. Lindell P.L.S. or R.C.E. No. LS 4016



COUNTY SURVEYOR'S STATEMENT

This Corner Record was received _____
and examined and filed _____
Signed _____ P.L.S. or R.C.E. No. _____
Title _____
County Surveyor's Comment _____

A.P.N.: N/A

T.G. 563-E-5