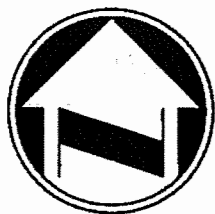
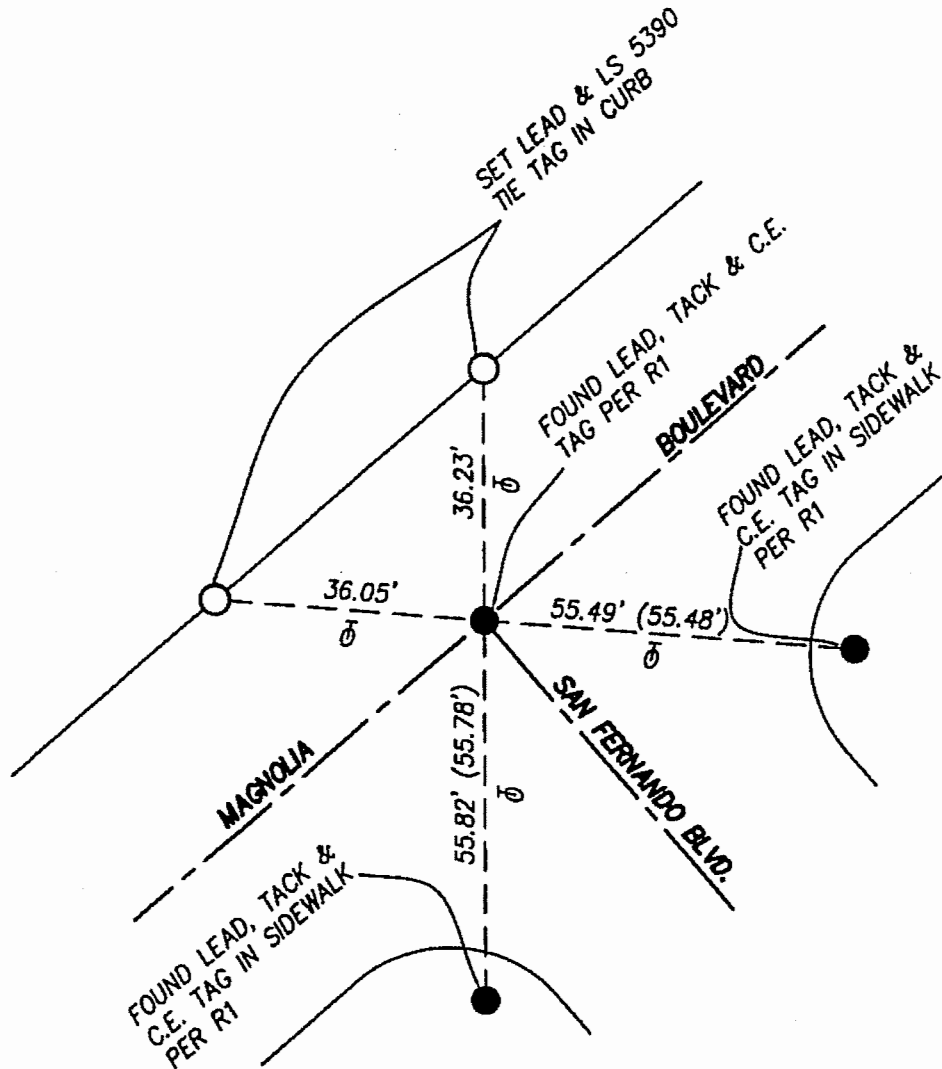


FB 340 P.1



NOT TO SCALE

● FOUND MONUMENT AS NOTED

○ SET MONUMENT AS NOTED

R1 = P.W.F.B. 1719/639-640

CORNER RECORD

Agency Index _____

Document Number _____

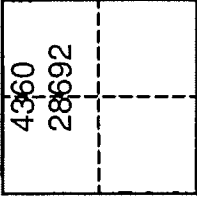
City of BURBANK

County of LOS ANGELES, California

Brief Legal Description MAGNOLIA BLVD. & SAN FERNANDO BLVD.

CORNER TYPE

COORDINATES (Optional)



Government Corner Control
 Meander Property
 Rancho Other

N. _____ E. _____
 Elevation _____
 Units Metric U.S. Survey Foot
 Horizontal Datum _____
 Zone _____ Epoch Date _____
 Vertical Datum _____

Date of Survey 1-11-2018

Complies with Public Resources Code §§8801-8819
 Complies with Public Resources Code §§8890-8902

PLS Act Ref: 8765(d) 8771 8773 Other:

Corner/Monument: Left as found Established Rebuilt Pre-Construction
 Found and tagged Reestablished Referenced Post-Construction

Narrative of corner identified and monument as found, set, reset, replaced, or removed:

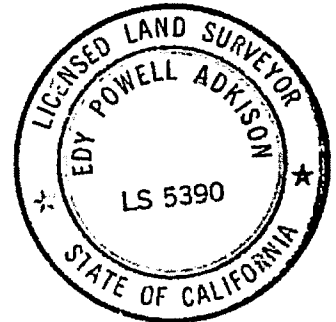
See sheet #2 for description

THESE TIES ARE FOR THE PURPOSE OF PERPETUATING THE FOUND MONUMENTATION PURSUANT TO THE PLS ACT SECTION 8771. NO CLAIM IS MADE AS TO THE RELATIONSHIP OF THE POINTS OR LINES SHOWN HEREON TO THE TRUE BOUNDARY LOCATION.

SURVEYOR'S STATEMENT

This Corner Record was prepared by me or under my direction in conformance with the Professional Land Surveyors' Act on 3-20-2018

Signed [Signature] P.L.S. or R.C.E. No. 5390



COUNTY SURVEYOR'S STATEMENT

This Corner Record was received FEB 06 2018 MAR 27 2018
 and examined and filed APR 17 2018

Signed [Signature] P.L.S. or R.C.E. No. 6388

Title DEPUTY COUNTY SURVEYOR



County Surveyor's Comment _____

