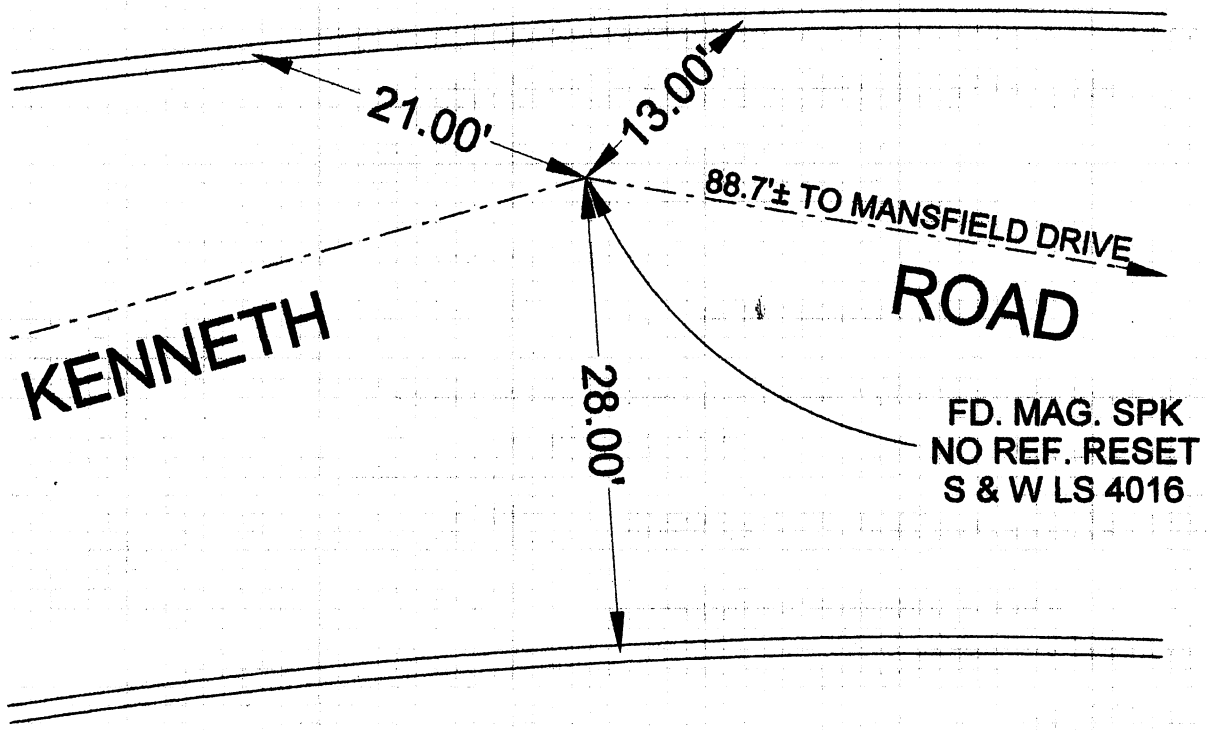


ALL TIES L & TAG LS 4016
W/ CHIS'D "T"

ALL TIES MEAS'D FLAT



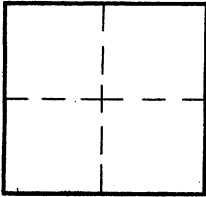
CORNER RECORD

Document Number _____

City of BURBANK

County of Los Angeles, California

Brief Legal Description KENNETH ROAD & P.I. W/O MANSFIELD DRIVE



CORNER TYPE

COORDINATES (Optional)

Govt. Corner Control
 Meander Property
 Rancho Other
 Date of Survey 7/01/16

N. _____
 E. _____
 Zone _____ NAD27 NAD83
 NAD83 Epoch _____
 Elev. _____
 Vert. Datum: NGVD29 NAVD88
 Meas. Units: Metric Imperial

Corner - Left as found Found & tagged Established Reestablished Rebuilt

Identification and type of corner found: Evidence used to identify or procedure used to establish or reestablish the corner:
TIED OUT AS FOUND BEFORE CONSTRUCTION

A description of the physical condition of the monument as found and as set or reset:
ALL FOUND TIE POINTS IN GOOD CONDITION

SURVEYOR'S STATEMENT

This Corner Record was prepared by me or under my direction in conformance
 with the Land Surveyors' Act on JULY 5, 2016

Signed David L. Lindell P.L.S. or R.C.E. No. LS 4016



COUNTY SURVEYOR'S STATEMENT

This Corner Record was received _____

and examined and filed _____

Signed _____ P.L.S. or R.C.E. No. _____

Title: _____

County Surveyor's Comment _____