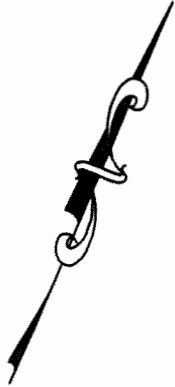
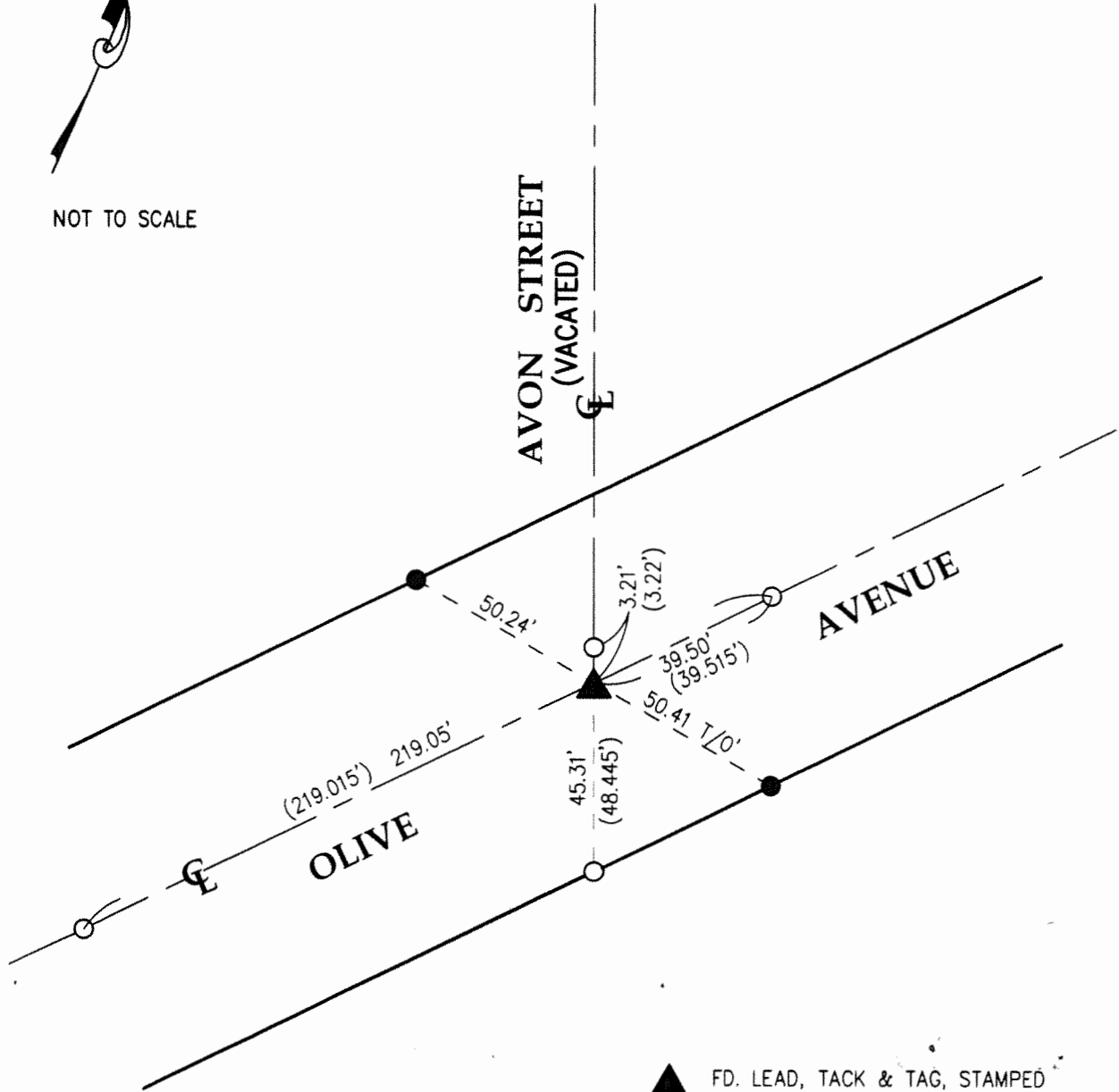


FB 339 P. 655



NOT TO SCALE



- ▲ FD. LEAD, TACK & TAG, STAMPED
LS 5314, PER PARCEL MAP NO.
72397, PMB 405/85-91.
- SET L/T & TAG, LS 5314.
- FD. L/T, NO TAG, PER CITY
ENGINEER FB 335, PAGE 241.
- (XX.XX) RECORD DISTANCE PER CITY
ENGINEER FB 335, PAGE 241.

PWFB 1618

873

CORNER RECORD

Agency Index _____

Document Number _____

City of Burbank

County of Los Angeles, California

Brief Legal Description Centerline Intersection of Olive Avenue and Avon Street.

19-2916
37655

CORNER TYPE

- Government Corner
- Meander
- Rancho
- Control
- Property
- Other

Date of Survey November, 2016

COORDINATES (Optional)

N _____ E _____

Elevation _____

Units Metric U.S. Survey Foot

Horizontal Datum _____

Zone _____ Epoch Date _____

Vertical Datum _____

Complies with Public Resources Code §§8801-8819

Complies with Public Resources Code §§8890-8902

PLS Act Ref: 8765(d) 8771 8773 Other:

Corner/Monument: Left as found Established Rebuilt Pre-Construction

Found and tagged Reestablished Referenced Post-Construction

Narrative of corner identified and monument as found, set, reset, replaced, or removed:

See sheet #2 for description(s) :

SURVEYOR'S STATEMENT

This Corner Record was prepared by me or under my direction in conformance with the Professional Land Surveyors' Act on June 26, 2018

Signed Robert N. MIM Mack P.L.S. or R.C.E. No. 5314



COUNTY SURVEYOR'S STATEMENT

This Corner Record was received OCT 23 2019

and examined and filed OCT 25 2019

Signed Curt M. O'Bryan P.L.S. or R.C.E. No. 6388

Title DEPUTY COUNTY SURVEYOR

County Surveyor's Comment

