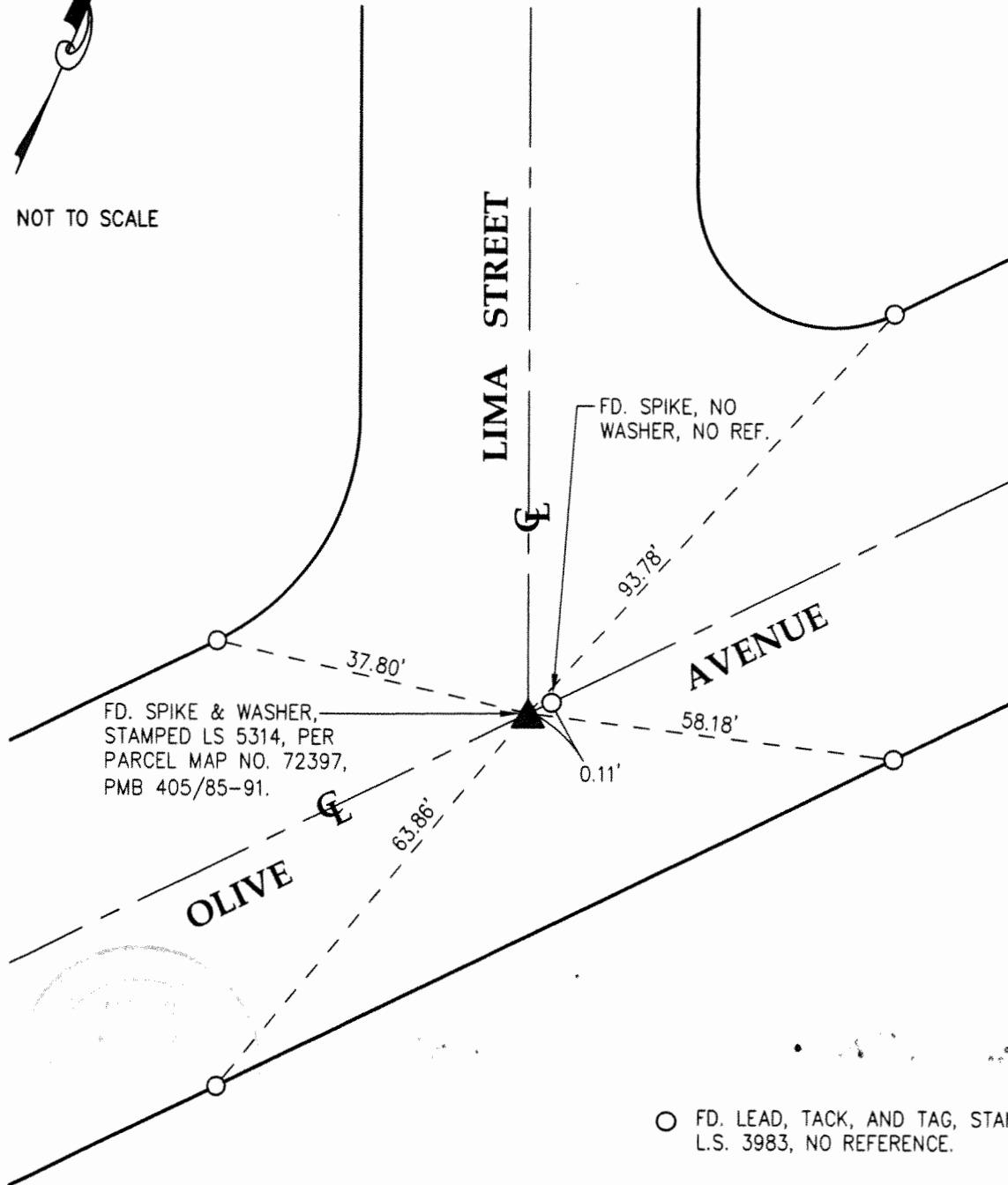


FB 339 P. 649



NOT TO SCALE



PWFB 1618

875

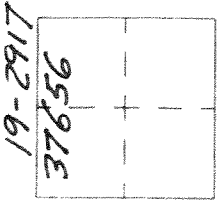
CORNER RECORD

Agency Index _____
Document Number _____

City of Burbank

County of Los Angeles, California

Brief Legal Description Centerline Intersection of Olive Avenue and Lima Street.



CORNER TYPE

- Government Corner Control
 Meander Property
 Rancho Other

COORDINATES (Optional)

N. _____ E. _____
 Elevation _____
 Units Metric U.S. Survey Foot
 Horizontal Datum _____
 Zone _____ Epoch Date _____
 Vertical Datum _____
 Complies with Public Resources Code §§8801-8819
 Complies with Public Resources Code §§8890-8902

Date of Survey November, 2016

PLS Act Ref: 8765(d) 8771 8773 Other:

Corner/Monument: Left as found Established Rebuilt Pre-Construction
 Found and tagged Reestablished Referenced Post-Construction

Narrative of corner identified and monument as found, set, reset, replaced, or removed:

See sheet #2 for description(s) :

Established at intersection of record angle of Lima Street centerline per Tract No. 10135, M.B. 141, pages 21 and 22, projected southerly to Olive Avenue. Set spike and washer stamped LS 5314, flush, and ties shown on page 2.

SURVEYOR'S STATEMENT

This Corner Record was prepared by me or under my direction in conformance with the Professional Land Surveyors' Act on June 26, 2018
 Signed Robert N. Mimm Mack P.L.S. or R.C.E. No. 5314



COUNTY SURVEYOR'S STATEMENT

This Corner Record was received OCT 23 2019
 and examined and filed OCT 25 2019
 Signed Curt M. O'Bryan P.L.S. or R.C.E. No. 6388
 Title DEPUTY COUNTY SURVEYOR



County Surveyor's Comment