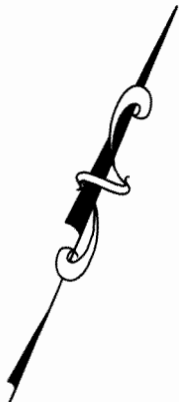
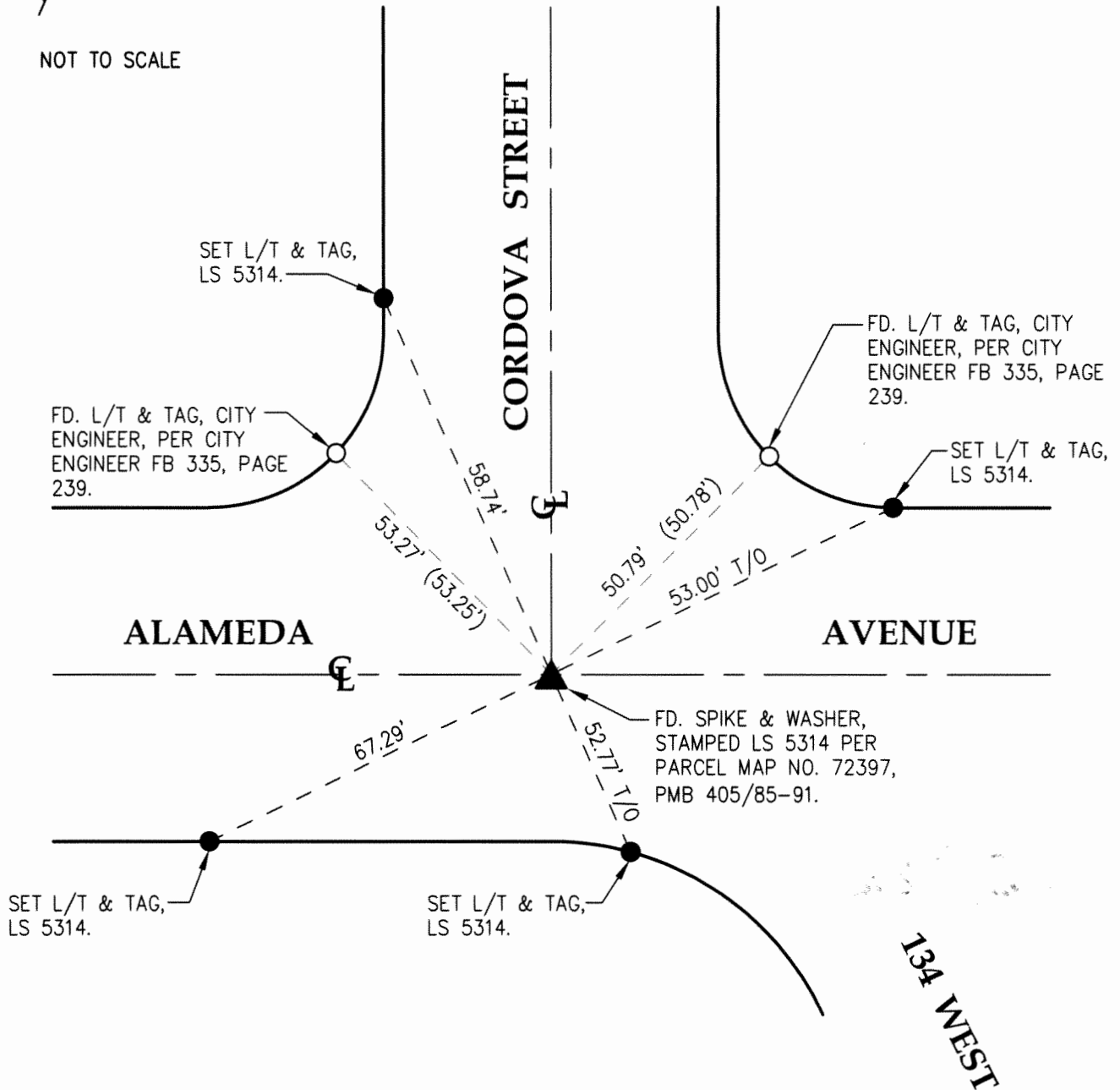


FB 339 P. 647



NOT TO SCALE



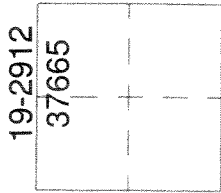
(XX.XX) RECORD DISTANCE PER CITY ENGINEER FB 335, PAGE 239.

CORNER RECORD

Agency Index _____
Document Number _____

City of Burbank County of Los Angeles, California

Brief Legal Description Centerline Intersection of Alameda Avenue and Cordova Street.



CORNER TYPE

- Government Corner
- Meander
- Rancho
- Control
- Property
- Other

Date of Survey NOVEMBER 2016

COORDINATES (Optional)

- N. _____ E. _____
 Elevation _____
 Units Metric U.S. Survey Foot
 Horizontal Datum _____
 Zone _____ Epoch Date _____
 Vertical Datum _____
 Complies with Public Resources Code §§8801-8819
 Complies with Public Resources Code §§8890-8902

- PLS Act Ref: 8765(d) 8771 8773 Other:
 Corner/Monument: Left as found Established Rebuilt Pre-Construction
 Found and tagged Reestablished Referenced Post-Construction

Narrative of corner identified and monument as found, set, reset, replaced, or removed:
 See sheet #2 for description(s) :

Established using 2 fd. L&T stamped "CE" in top of curb per PWFB 1618, pages 208-209.
Set new ties, L&T in curb stamped LS 5314 as shown on sheet 2.

SURVEYOR'S STATEMENT

This Corner Record was prepared by me or under my direction in conformance with
the Professional Land Surveyors' Act on June 26, 2018
Signed Robert N. MIM MACK P.L.S. or R.C.E. No. 5314



COUNTY SURVEYOR'S STATEMENT

This Corner Record was received OCTOBER 23 2019
and examined and filed OCT 25 2019
Signed Curt M. O'Bryan P.L.S. or R.C.E. No. 6388
Title DEPUTY COUNTY SURVEYOR



County Surveyor's Comment