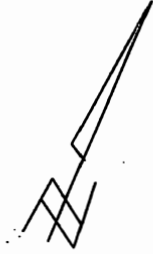
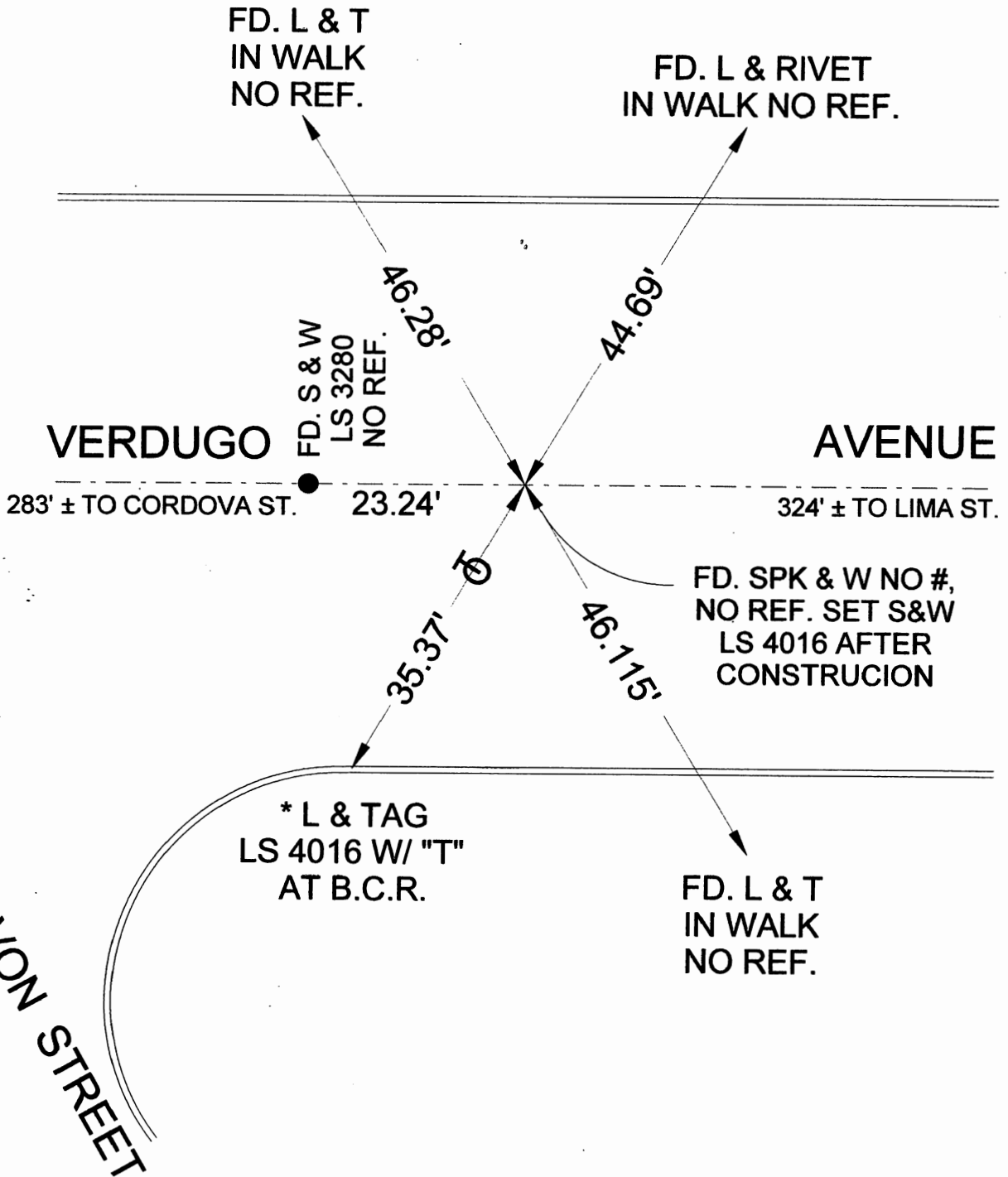


Document Number

Agency Index



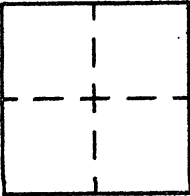
* INDICATES PER
PRE-CONST. TIES



CORNER RECORD

Agency Index _____
Document Number _____

City of BURBANK County of LOS ANGELES, California
Brief Legal Description VERDUGO AVENUE & FD. S & W 306'± E/O CORDOVA STREET



CORNER TYPE

- Government Corner
- Meander
- Rancho
- Control
- Property
- Other

5/24/19

Date of Survey _____

COORDINATES (Optional)

N. _____ E. _____

Elevation _____

Units Metric U.S. Survey Foot

Horizontal Datum _____

Zone _____ Epoch Date _____

Vertical Datum _____

Complies with Public Resources Code §§8801-8819

Complies with Public Resources Code §§8880-8802

PLS Act Ref: 8768(d) 8771 8773 Other: _____

Corner/Monument: Left as found Established Rebuilt Pre-Construction
 Found and tagged Reestablished Referenced Post-Construction

Narrative of corner identified and monument as found, set, reset, replaced, or removed:
 See sheet #2 for description(s) :

SURVEYOR'S STATEMENT

This Corner Record was prepared by me or under my direction in conformance with
the Professional Land Surveyors' Act on JUNE 4, 2019
Signed David L Lindell P.L.S. or R.C.E. No. LS 4016



COUNTY SURVEYOR'S STATEMENT

This Corner Record was received _____,
and examined and filed _____,
Signed _____ P.L.S. or R.C.E. No. _____
Title _____

County Surveyor's Comment

A.P.N.: N/A

T.G. 563-D-3