

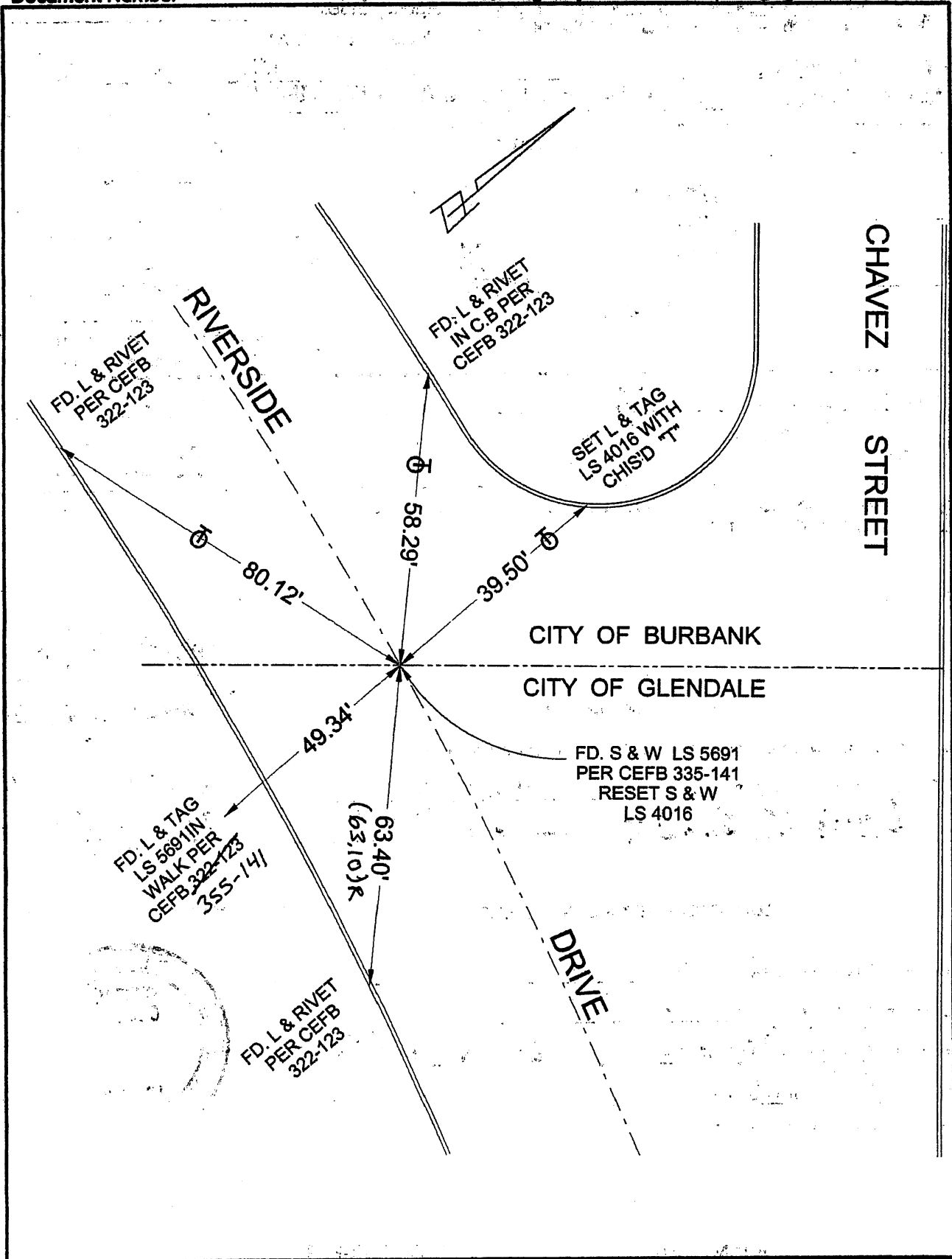
PWF 81719

FB 339 P. 585

Agency Index

1683

Document Number

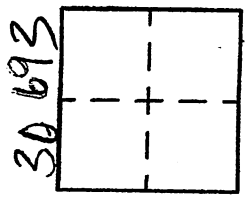


PWFB 1719

CORNER RECORD

Agency Index 1682
Document Number _____

City of BURBANK County of LOS ANGELES, California
Brief Legal Description RIVERSIDE DRIVE AT GLENDALE CITY LIMITS



CORNER TYPE

- Government Corner
- Meander
- Rancho
- Control
- Property
- Other

Date of Survey 6/29/18

COORDINATES (Optional)

N. _____ E. _____
 Elevation _____
 Units Metric U.S. Survey Foot
 Horizontal Datum _____
 Zone _____ Epoch Date _____
 Vertical Datum _____
 Complies with Public Resources Code §§8801-8819
 Complies with Public Resources Code §§8890-8902

PLS Act Ref: 8765(d) 8771 8775 Other: _____
 Corner/Monument: Left as found Established Rebuilt Pre-Construction
 Found and tagged Reestablished Referenced Post-Construction

Narrative of corner identified and monument as found, set, reset, replaced, or removed:
 See sheet #2 for description(s) :

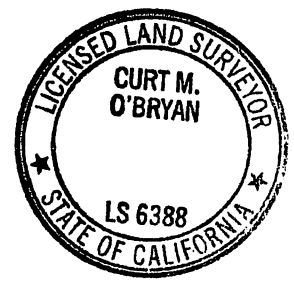
SURVEYOR'S STATEMENT

This Corner Record was prepared by me or under my direction in conformance with
 the Professional Land Surveyors' Act on JUNE 30, 2018
 Signed David L. Lindell P.L.S. or R.C.E. No. LS 4016



COUNTY SURVEYOR'S STATEMENT

This Corner Record was received JUL 02 2018
 and examined and filed OCT 31 2018
 Signed Curt M. O'Bryan P.L.S. or R.C.E. No. 6388
 Title DEPUTY COUNTY SURVEYOR



County Surveyor's Comment

A.P.N. N/A

T.G. 563-H-3