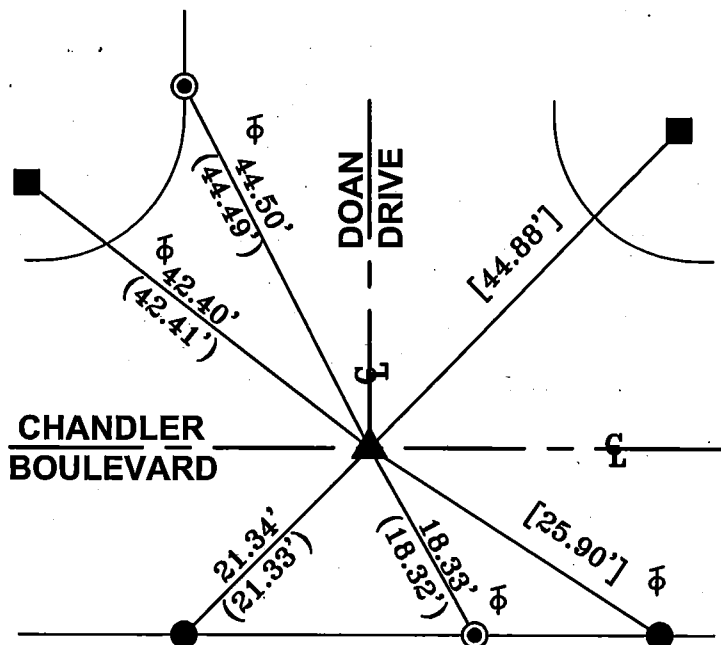


FB 339 P.53

- R-1 = CITY OF BURBANK TIE SHEET FB 334/119
- () = RECORD DISTANCE PER R-1
- [] = RECORD & MEASURED DISTANCE PER R-1
- ⊕ = TANGENT OVER



NTS



- ▲ FD PUNCHED SPK/W "LA CO FLOOD CONTROL" FLUSH NO REF., FITS POSITION OF SPK/W PER R-1 BEFORE CONSTRUCTION. SET MAG. NAIL/W "LS 5411" TAG FLUSH PER TIES HEREON AFTER CONSTRUCTION.
- FD L/T IN T.C. PER R-1.
- FD L/T IN WALK PER R-1.
- ⊙ FD L/T "LS 4016" IN T.C. PER R-1.

THE PURPOSE OF THIS RECORD IS TO DOCUMENT THE PERPETUATION OF FOUND MONUMENT(S) PURSUANT TO THE PLS ACT SECTION 8771. NO CLAIM IS MADE REGARDING THE CORRECTNESS OF THE POSITION(S) OF SAID MONUMENT(S), NOR THE DIMENSIONAL RELATIONSHIP TO STREET CENTERLINES OF PROPERTY BOUNDARIES.

11-TOR-759

CORNER RECORD

PWFB 1718

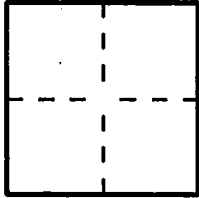
1242

Document Number

City of Burbank

County of Los Angeles, California

Brief Legal Description Doan Drive & Chandler Boulevard



CORNER TYPE

Government Corner [] Control [x]
Meander [] Property []
Rancho [] Other []
Date of Survey 01/27/11

COORDINATES (Optional)

N.
E.
Zone NAD27 [] NAD83 []
NAD83 Epoch
Elevation
Vertical Datum: NGVD29 [] NAVD88 []
Units: Metric [] Imperial [] U.S. Survey [x]

Corner — Left as found [x] Found and tagged [] Established [] Reestablished [] Rebuilt []

Identification and type of corner found; Evidence used to identify or procedure used to establish or reestablish the corner. Found as described on the reverse of this sheet.

A description of the physical condition of the monument as found and as set or reset:

See Sheet 2

SURVEYOR'S STATEMENT

This Corner Record was prepared by me or under my direction in conformance with the Professional Land Surveyors' Act on September 7, 2011

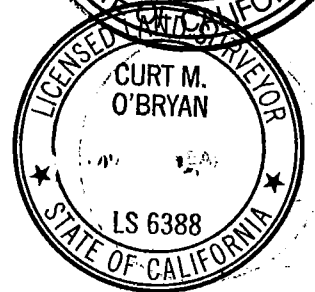
Signed [Signature] P.L.S. or R.C.E. No. L.S. 5411



COUNTY SURVEYOR'S STATEMENT

This Corner Record was received SEP 15 2011 examined and filed OCT 12 2011

Signed [Signature] P.L.S. or R.C.E. No. 6388
Title DEPUTY COUNTY SURVEYOR



County Surveyor's Comment