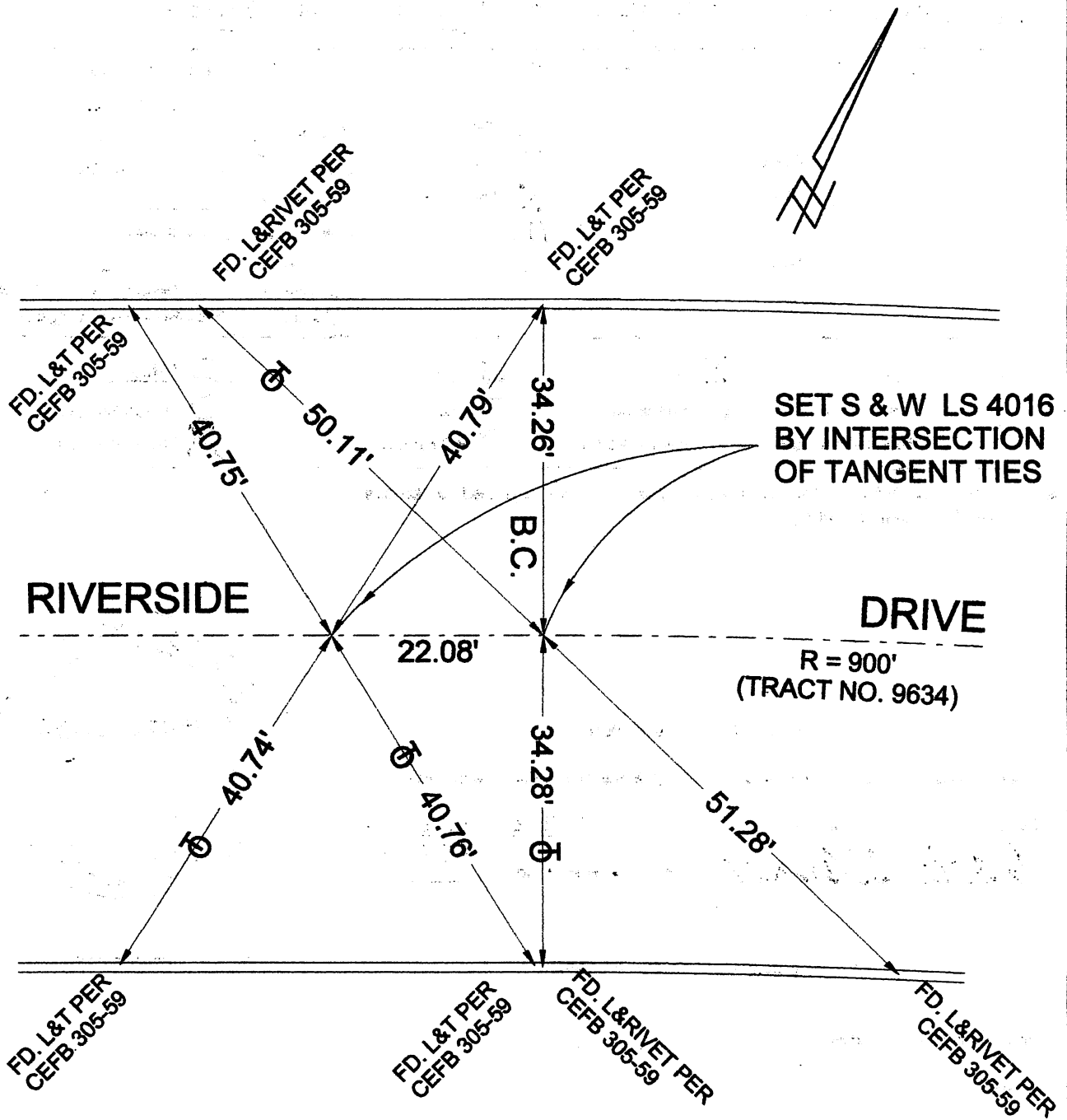


Document Number

Agency Index



SET S & W LS 4016 BY INTERSECTION OF TANGENT TIES

RIVERSIDE

DRIVE

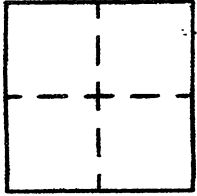
R = 900' (TRACT NO. 9634)

TRACT NO. 33726 (M.B. 891-64-65)

# CORNER RECORD

Agency Index \_\_\_\_\_  
Document Number \_\_\_\_\_

City of BURBANK County of LOS ANGELES, California  
Brief Legal Description RIVERSIDE DRIVE B.C. & TR. NO. 33726 (M.B. 891-64-65)



### CORNER TYPE

- Government Corner
- Meander
- Rancho
- Control
- Property
- Other

6/11/18

Date of Survey \_\_\_\_\_

### COORDINATES (Optional)

N. \_\_\_\_\_ E. \_\_\_\_\_

Elevation \_\_\_\_\_

Units  Metric  U.S. Survey Foot

Horizontal Datum \_\_\_\_\_

Zone \_\_\_\_\_ Epoch Date \_\_\_\_\_

Vertical Datum \_\_\_\_\_

Complies with Public Resources Code §§8801-8819

Complies with Public Resources Code §§8880-8902

PLS Act Ref:  8768(d)  8771  8773  Other: \_\_\_\_\_

Corner/Monument:  Left as found  Established  Rebuilt  Pre-Construction  
 Found and tagged  Reestablished  Referenced  Post-Construction

Narrative of corner identified and monument as found, set, reset, replaced, or removed:  
 See sheet #2 for description(s) :

### SURVEYOR'S STATEMENT

This Corner Record was prepared by me or under my direction in conformance with  
 the Professional Land Surveyors' Act on JUNE 23, 2018  
 Signed David L. Lindell P.L.S. or R.C.E. No. LS 4016



### COUNTY SURVEYOR'S STATEMENT

This Corner Record was received \_\_\_\_\_,  
 and examined and filed \_\_\_\_\_,  
 Signed \_\_\_\_\_ P.L.S. or R.C.E. No. \_\_\_\_\_  
 Title \_\_\_\_\_

County Surveyor's Comment

A.P.N. N/A

T.G. 563-H-3