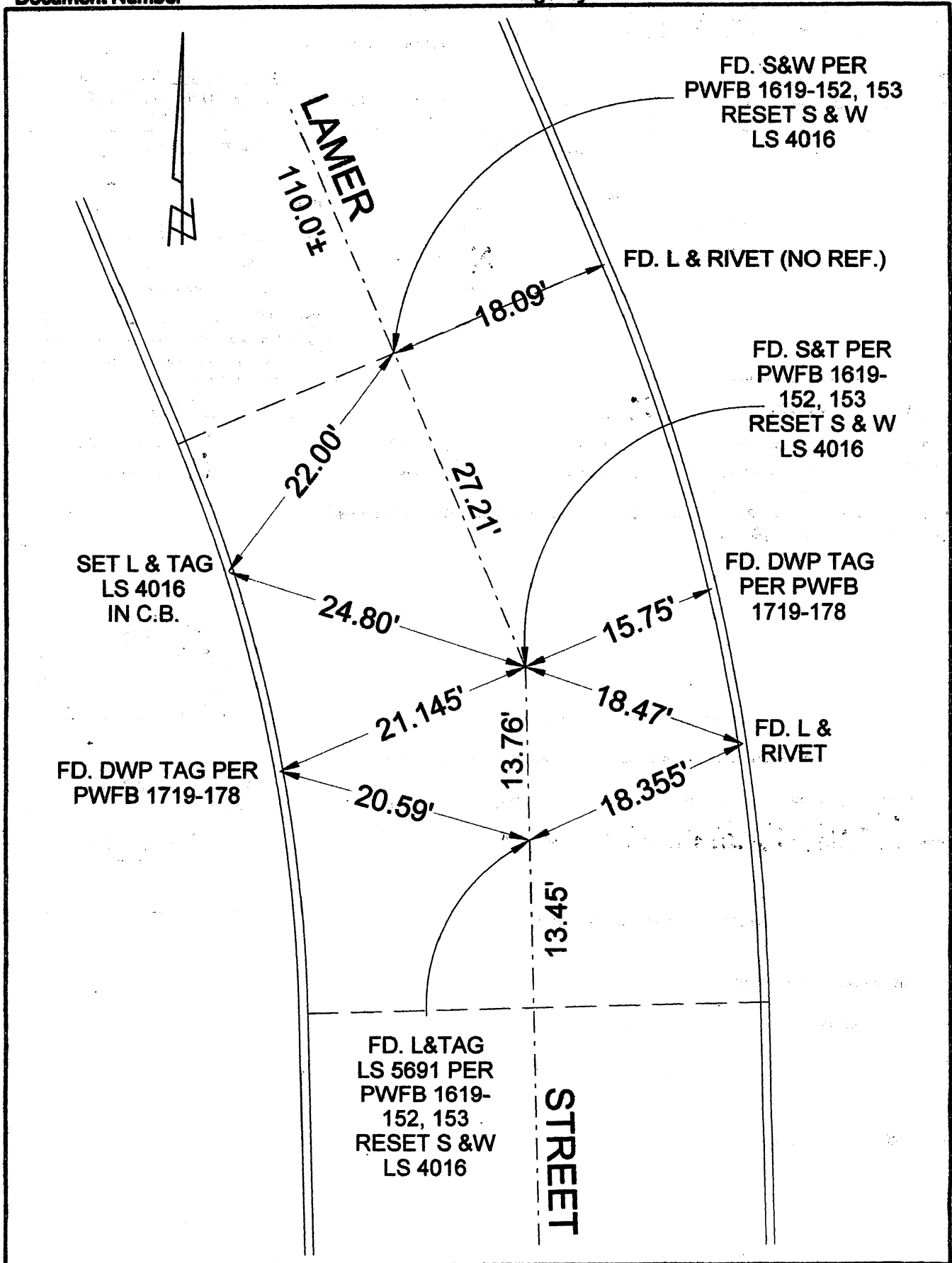


FB 339 P. 487

Document Number

Agency Index

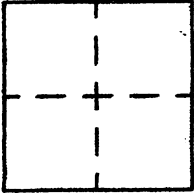


10-5-6-7

CORNER RECORD

Agency Index _____
Document Number _____

City of BURBANK County of LOS ANGELES, California
Brief Legal Description LAMER STREET & MISC. C/L POINTS ON PARKSIDE AVENUE



CORNER TYPE

- Government Corner
- Meander
- Rancho
- Control
- Property
- Other

6/15/18

Date of Survey _____

COORDINATES (Optional)

N. _____ E. _____

Elevation _____

Units Metric U.S. Survey Foot

Horizontal Datum _____

Zone _____ Epoch Date _____

Vertical Datum _____

Complies with Public Resources Code §§8801-8819

Complies with Public Resources Code §§8890-8902

PLS Act Ref: 8769(d) 8771 8773 Other: _____

Corner/Monument: Left as found Established Rebuilt Pre-Construction

Found and tagged Reestablished Referenced Post-Construction

Narrative of corner identified and monument as found, set, reset, replaced, or removed:
 See sheet #2 for description(s) :

SURVEYOR'S STATEMENT

This Corner Record was prepared by me or under my direction in conformance with
the Professional Land Surveyors' Act on JUNE 23, 2018
Signed David L. Lindell P.L.S. or R.C.E. No. LS 4016



COUNTY SURVEYOR'S STATEMENT

This Corner Record was received _____,
and examined and filed _____,
Signed _____ P.L.S. or R.C.E. No. _____
Title _____

County Surveyor's Comment _____

A.P.N. N/A

T.G. 563-F-3