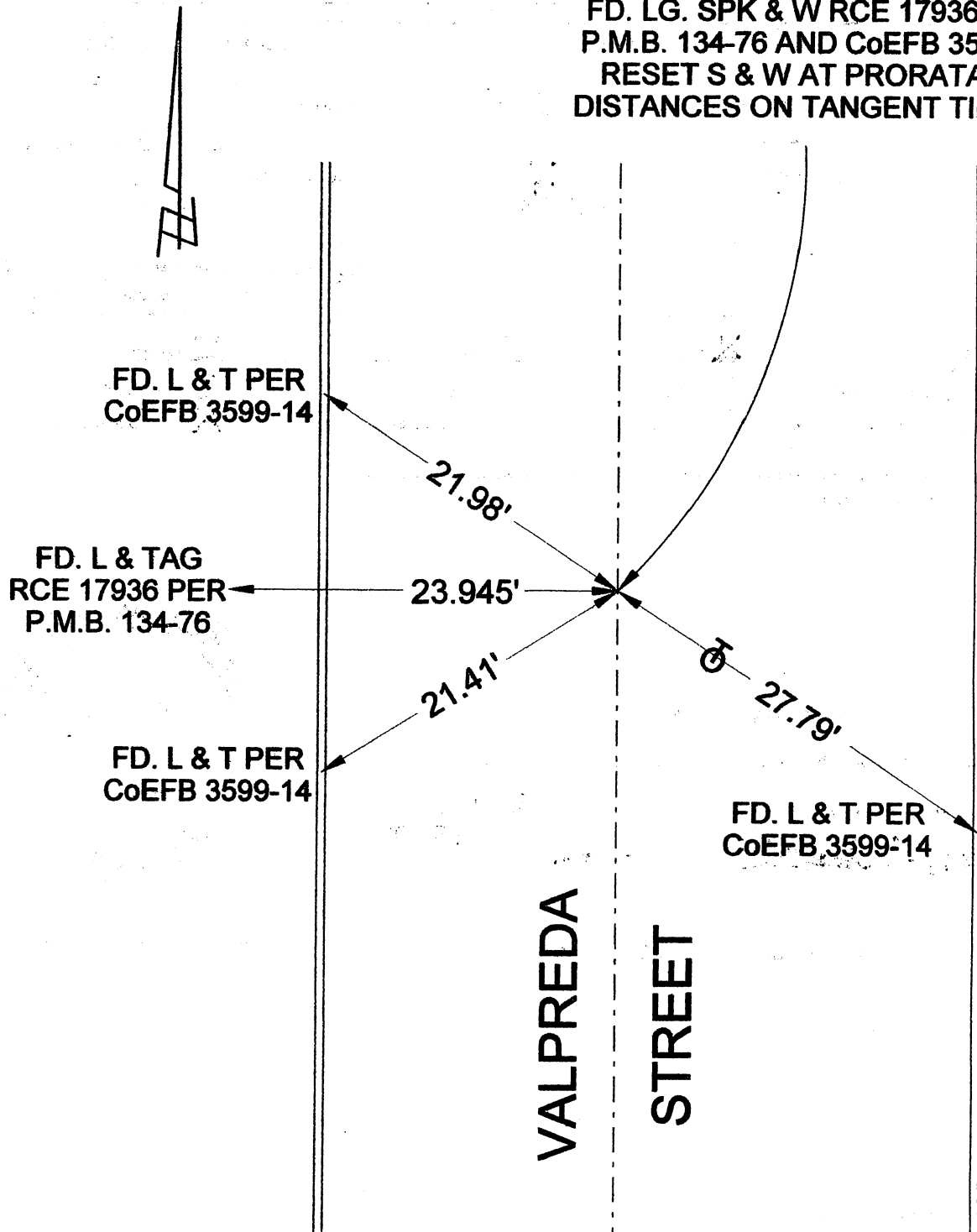


FD. LG. SPK & W RCE 17936 PER
P.M.B. 134-76 AND CoEFB 3599-14
RESET S & W AT PRORATA TIE
DISTANCES ON TANGENT TIE LINE



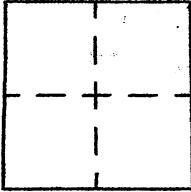
CORNER RECORD

Agency Index _____
Document Number _____

City of BURBANK

County of LOS ANGELES, California

Brief Legal Description C/L VALPREDA STREET & S'LY LINE PARCEL 1, P.M.B. 134-76



CORNER TYPE

- Government Corner
- Meander
- Rancho
- Control
- Property
- Other

5/25/18

Date of Survey _____

COORDINATES (Optional)

N. _____ E. _____

Elevation _____

Units Metric U.S. Survey Foot

Horizontal Datum _____

Zone _____ Epoch Date _____

Vertical Datum _____

Complies with Public Resources Code §§8801-8819

Complies with Public Resources Code §§8890-8902

PLS Act Ref: 8765(d) 8771 8773 Other:

Corner/Monument: Left as found Established Rebuilt Pre-Construction
 Found and tagged Reestablished Referenced Post-Construction

Narrative of corner identified and monument as found, set, reset, replaced, or removed:

See sheet #2 for description(s) :

SURVEYOR'S STATEMENT

This Corner Record was prepared by me or under my direction in conformance with

the Professional Land Surveyors' Act on MAY 26, 2018

Signed David L. Lindell P.L.S. or R.C.E. No. LS 4016



COUNTY SURVEYOR'S STATEMENT

This Corner Record was received _____,

and examined and filed _____.

Signed _____ P.L.S. or R.C.E. No. _____

Title _____

County Surveyor's Comment

A.P.N. N/A

T.G. 533-E-5