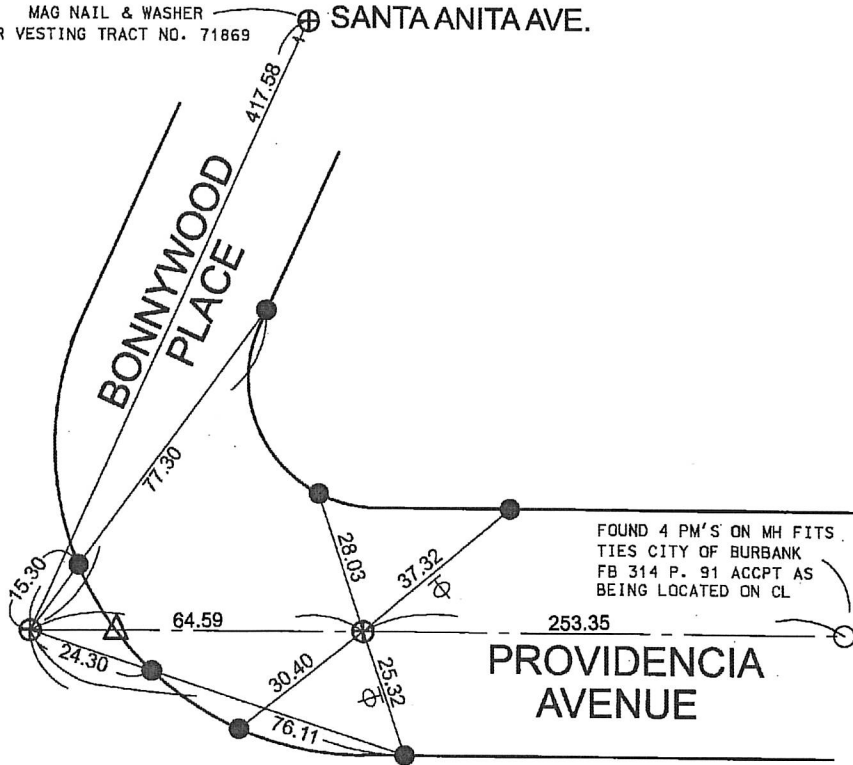


FB 339 P. 395

Document Number

Agency Index

MAG NAIL & WASHER  
PER VESTING TRACT NO. 71869



PROVIDENCIA AVENUE

MONUMENTS SET PER VESTING TRACT NO. 71869 M.B. 1399-86-91

⊕=SET MAG NAIL & WASHER RCE 25190

●=SET L, T, AND TAG ON TOP OF CURB RCE 25190

⊕=TANGENT OVER

△= FND. LEAD & TACK IN DRIVEWAY  
C.L. PROD

# CORNER RECORD

Agency Index \_\_\_\_\_

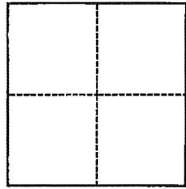
Document Number \_\_\_\_\_

City of BURBANK County of LOS ANGELES, California

Brief Legal Description PROVIDENCIA & BONNYWOOD

### CORNER TYPE

### COORDINATES (Optional)



- Government Corner
- Meander
- Rancho
- Control
- Property
- Other

N. \_\_\_\_\_ E. \_\_\_\_\_

Elevation \_\_\_\_\_

Units  Metric  U.S. Survey Foot

Horizontal Datum \_\_\_\_\_

Zone \_\_\_\_\_ Epoch Date \_\_\_\_\_

Vertical Datum \_\_\_\_\_

Complies with Public Resources Code §§8801-8819

Complies with Public Resources Code §§8890-8902

Date of Survey November 30, 2017

PLS Act Ref.:  8765(d)  8771  8773  Other:

Corner/Monument:  Left as found  Established  Rebuilt  Pre-Construction

Found and tagged  Reestablished  Referenced  Post-Construction

Narrative of corner identified and monument as found, set, reset, replaced, or removed:

See sheet #2 for description(s):

### SURVEYOR'S STATEMENT

This Corner Record was prepared by me or under my direction in conformance with

the Professional Land Surveyors' Act on December 6, 2017

Signed *George S. Colvin* P.L.S. or R.C.E. No. RCE 25190



### COUNTY SURVEYOR'S STATEMENT

This Corner Record was received \_\_\_\_\_

and examined and filed \_\_\_\_\_

Signed \_\_\_\_\_ P.L.S. or R.C.E. No. \_\_\_\_\_

Title \_\_\_\_\_

County Surveyor's Comment