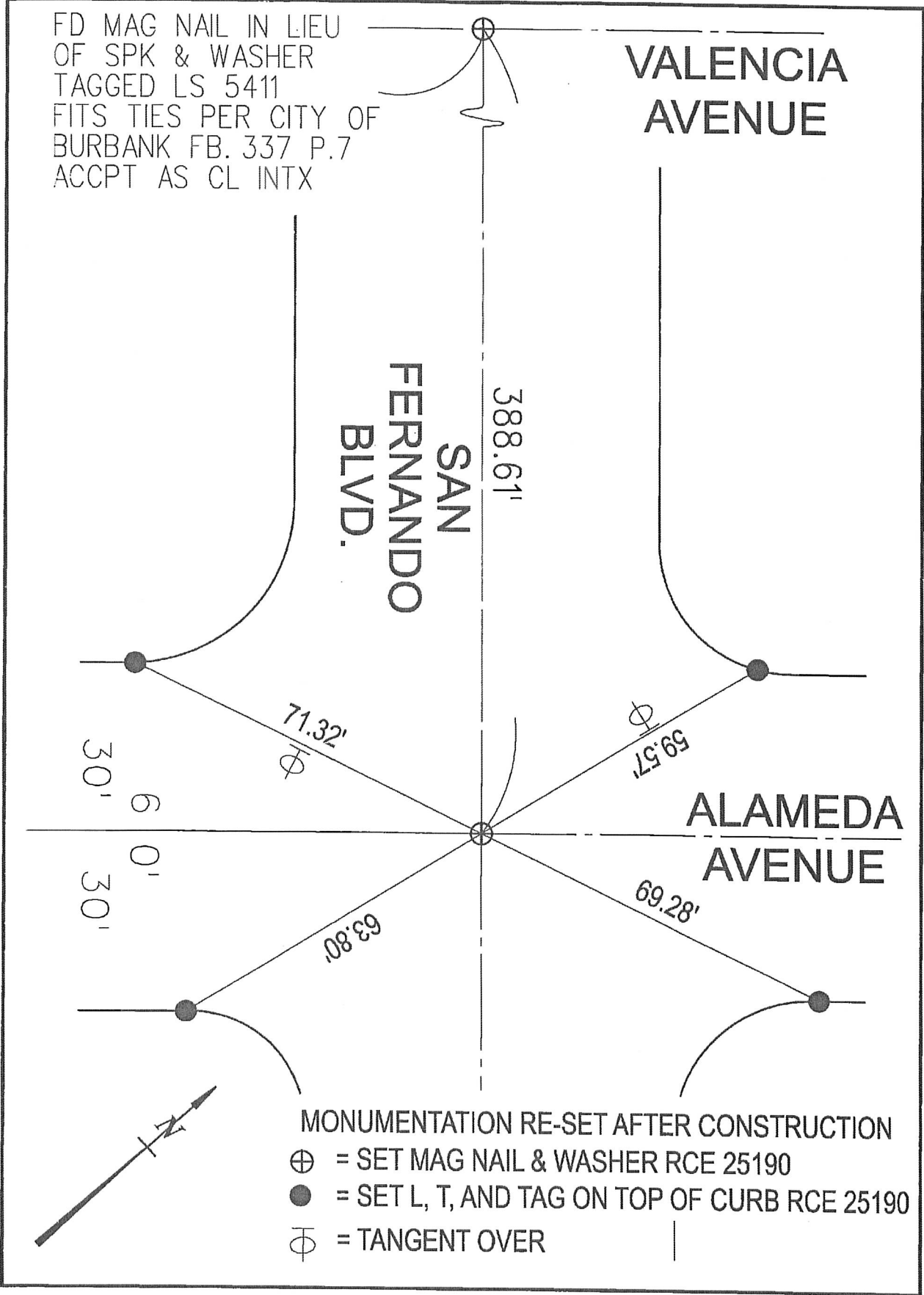


FD MAG NAIL IN LIEU
OF SPK & WASHER
TAGGED LS 5411
FITS TIES PER CITY OF
BURBANK FB. 337 P.7
ACCPT AS CL INTX



- MONUMENTATION RE-SET AFTER CONSTRUCTION
- ⊕ = SET MAG NAIL & WASHER RCE 25190
 - = SET L, T, AND TAG ON TOP OF CURB RCE 25190
 - ⊗ = TANGENT OVER

CORNER RECORD

Agency Index _____

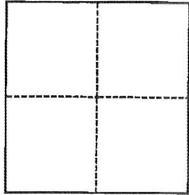
Document Number _____

City of BURBANK County of LOS ANGELES, California

Brief Legal Description ALAMEDA & SAN FERNANDO BLVD.

CORNER TYPE

COORDINATES (Optional)



- Government Corner
- Meander
- Rancho
- Control
- Property
- Other

Date of Survey June 27, 2017

N. _____ E. _____

Elevation _____

Units Metric U.S. Survey Foot

Horizontal Datum _____

Zone _____ Epoch Date _____

Vertical Datum _____

Complies with Public Resources Code §§8801-8819

Complies with Public Resources Code §§8890-8902

PLS Act Ref.: 8765(d) 8771 8773 Other:

Corner/Monument: Left as found Established Rebuilt Pre-Construction

Found and tagged Reestablished Referenced Post-Construction

Narrative of corner identified and monument as found, set, reset, replaced, or removed:

See sheet #2 for description(s):

SURVEYOR'S STATEMENT

This Corner Record was prepared by me or under my direction in conformance with

the Professional Land Surveyors' Act on October 5, 2017

Signed *George S. Colvin* P.L.S. or R.C.E. No. RCE 25190



COUNTY SURVEYOR'S STATEMENT

This Corner Record was received _____

and examined and filed _____

Signed _____ P.L.S. or R.C.E. No. _____

Title _____

County Surveyor's Comment