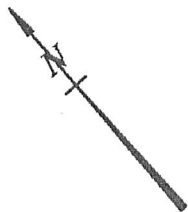


SAN FERNANDO
BLVD

FD MAG NAIL IN LIEU
OF SPK & WASHER
TAGGED LS 5411 FITS TIES
PER CITY OF BURBANK FB.
337 P.1 ACCPT AS CL INTX

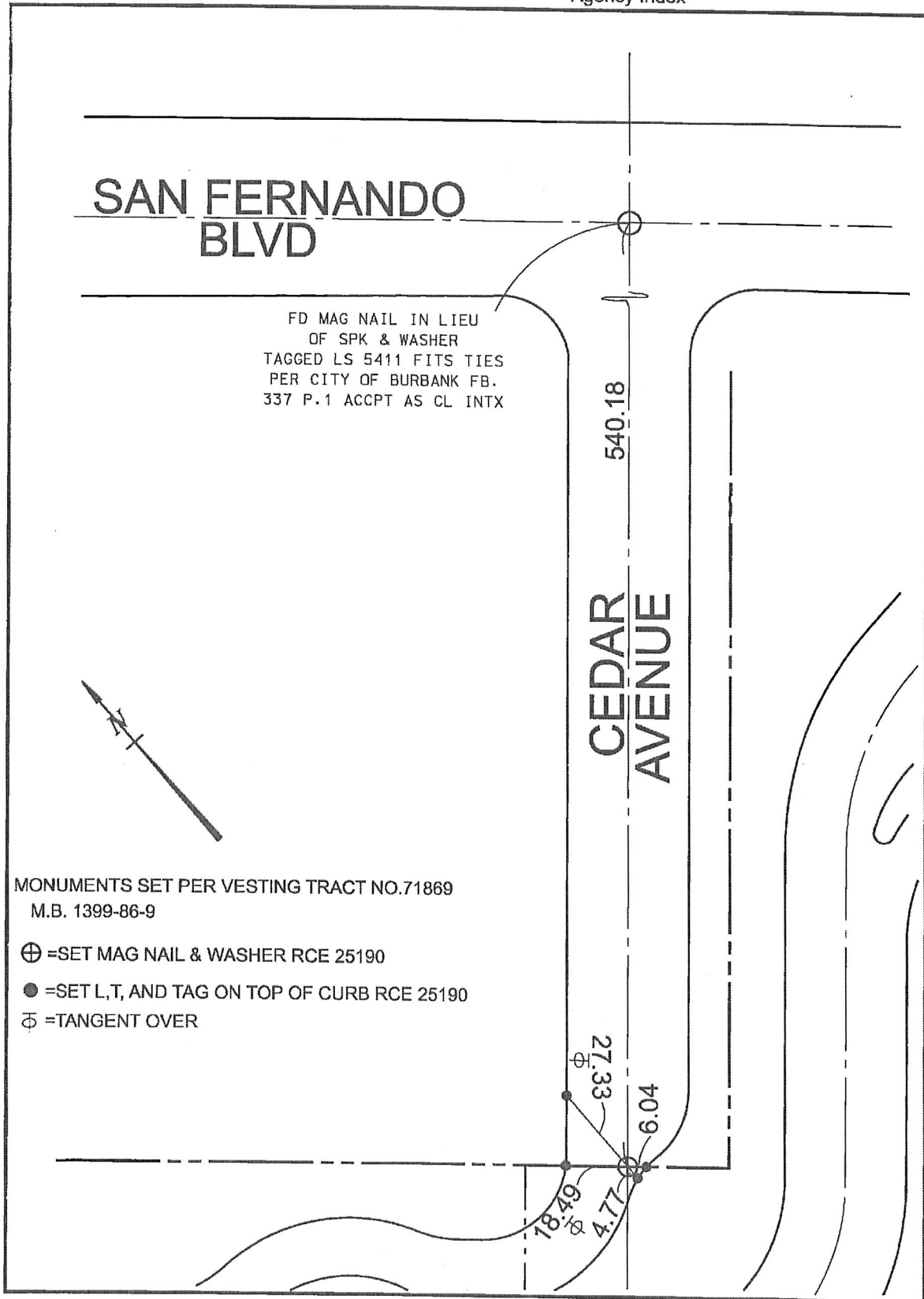
540.18

CEDAR
AVENUE



MONUMENTS SET PER VESTING TRACT NO.71869
M.B. 1399-86-9

- ⊕ =SET MAG NAIL & WASHER RCE 25190
- =SET L,T, AND TAG ON TOP OF CURB RCE 25190
- ⊖ =TANGENT OVER



CORNER RECORD

Agency Index _____

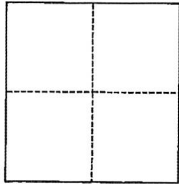
Document Number _____

City of BURBANK County of LOS ANGELES, California

Brief Legal Description CEDAR AVENUE & TRACT LINE

CORNER TYPE

COORDINATES (Optional)



- Government Corner Control
 Meander Property
 Rancho Other

Date of Survey June 28, 2017

N. _____ E. _____

Elevation _____

Units Metric U.S. Survey Foot

Horizontal Datum _____

Zone _____ Epoch Date _____

Vertical Datum _____

Complies with Public Resources Code §§8801-8819

Complies with Public Resources Code §§8890-8902

PLS Act Ref.: 8765(d) 8771 8773 Other:

Corner/
Monument: Left as found Established Rebuilt Pre-Construction

Found and tagged Reestablished Referenced Post-Construction

Narrative of corner identified and monument as found, set, reset, replaced, or removed:

See sheet #2 for description(s):

SURVEYOR'S STATEMENT

This Corner Record was prepared by me or under my direction in conformance with

the Professional Land Surveyors' Act on October 23, 2017

Signed *George S. Colvin* P.L.S. or R.C.E. No. RCE 25190



COUNTY SURVEYOR'S STATEMENT

This Corner Record was received _____

and examined and filed _____

Signed _____ P.L.S. or R.C.E. No. _____

Title _____

County Surveyor's Comment