

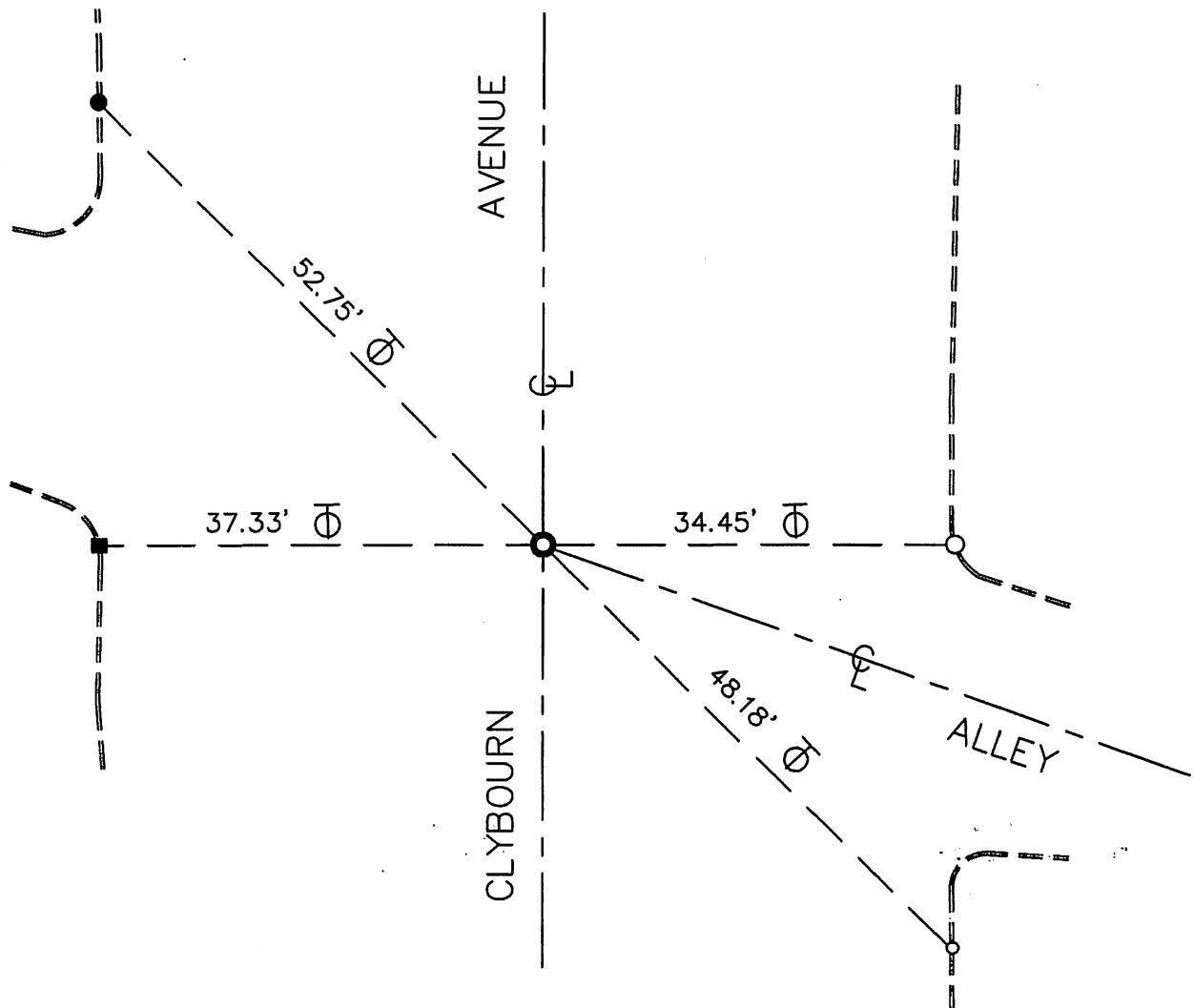
REFERENCES:

R1 : LA CO. PWFB 1618, PGS 675, 676

MONUMENT NOTES:

- : FD SPK PER R1
- : FD L&T PER R1
- : FD L&T TAGGED LS 8407 PER R1
- ⊙ : SET S&W, STAMPED LS 8407

NOT TO SCALE



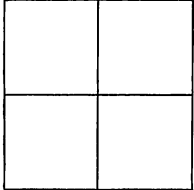
CORNER RECORD

Agency Index _____
Document Number _____
County of Los Angeles, California

City of Burbank

Brief Legal Description CENTERLINE INTERSECTION OF CLYBOURN AVENUE AND ALLEY

270/
25514



CORNER TYPE

Government Corner Control
Meander Property
Rancho Other

Date of Survey April 14, 2017

COORDINATES (Optional)

N. _____ E. _____
Elevation _____
Units Metric U.S. Survey Foot
Horizontal Datum _____
Zone _____ Epoch Date _____
Vertical Datum _____
 Complies with Public Resources Code §§8801-8819
 Complies with Public Resources Code §§8890-8902

PLS Act Ref: 8765 d) 8771 8773 Other:

Corner/Monument: Left as found Established Rebuilt Pre-Construction
 Found and tagged Reestablished Referenced Post-Construction

Narrative of corner identified and monument as found, set, reset, replaced, or removed:
 See sheet #2 for description(s) :

SURVEYOR'S STATEMENT

This Corner Record was prepared by me or under my direction in conformance with
the Professional Land Surveyors' Act on April 17, 2017.
Signed *Jack C. Lee* P.L.S. or R.C.E. No. 8407



COUNTY SURVEYOR'S STATEMENT

This Corner Record was received APR 25 2017,
and examined and filed MAY 31 2017.
Signed *Curt M. O'Bryan* P.L.S. or R.C.E. No. 6388
Title DEPUTY COUNTY SURVEYOR



County Surveyor's Comment