

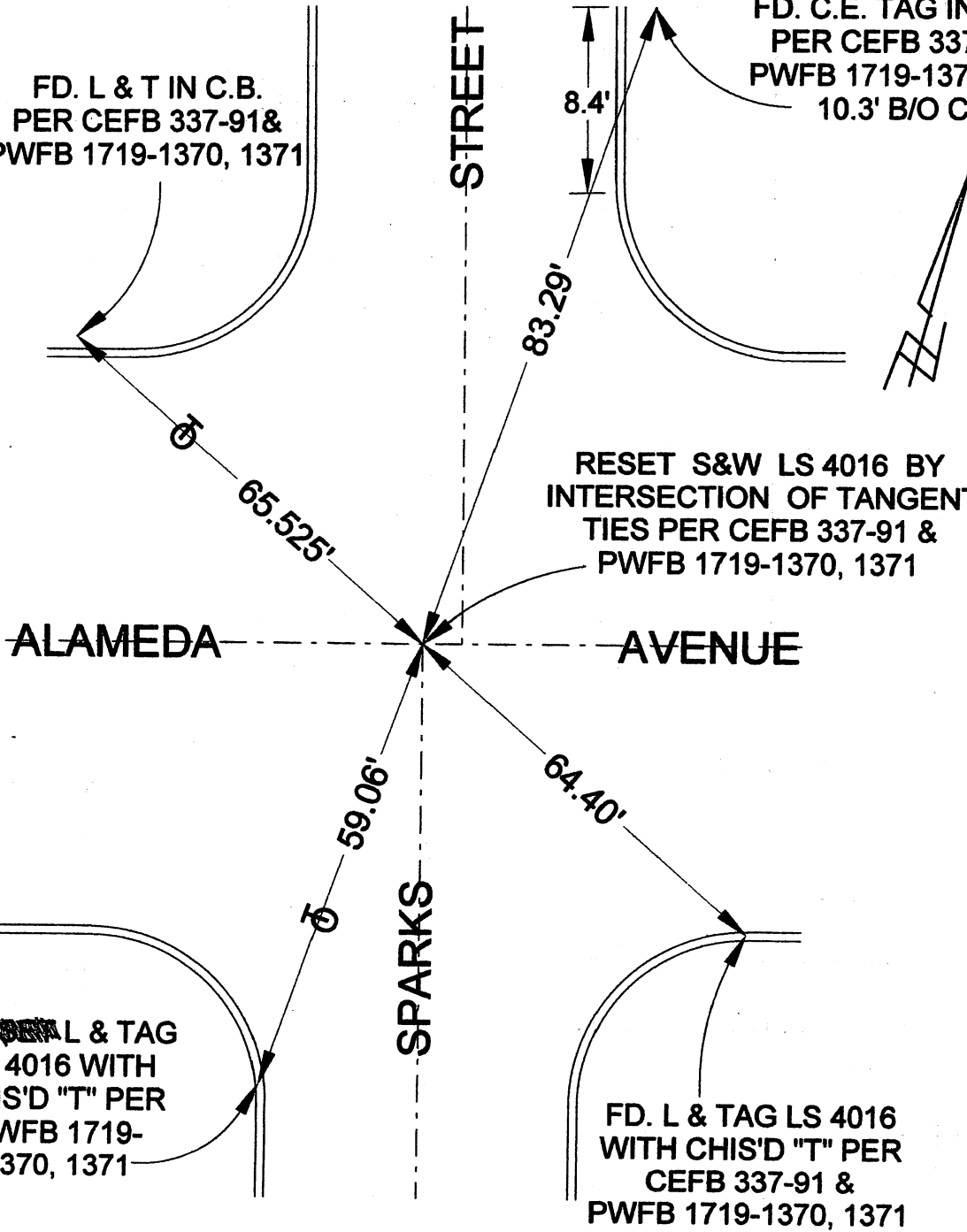
FD. L & T IN C.B.
PER CEFB 337-91 &
PWFB 1719-1370, 1371

FD. C.E. TAG IN WALK
PER CEFB 337-91 &
PWFB 1719-1370, 1371
10.3' B/O C.F.

RESET S&W LS 4016 BY
INTERSECTION OF TANGENT
TIES PER CEFB 337-91 &
PWFB 1719-1370, 1371

FD. ~~WALK~~ L & TAG
LS 4016 WITH
CHIS'D "T" PER
PWFB 1719-
1370, 1371

FD. L & TAG LS 4016
WITH CHIS'D "T" PER
CEF B 337-91 &
PWFB 1719-1370, 1371



CORNER RECORD

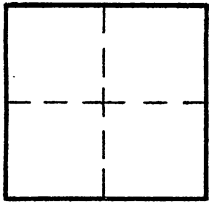
City of BURBANK

Document Number _____

County of Los Angeles, California

SPARKS STREET & ALAMEDA AVENUE

Brief Legal Description _____



CORNER TYPE

Govt. Corner Control
 Meander Property
 Rancho Other
 Date of Survey 1/04/17

COORDINATES (Optional)

N. _____
 E. _____
 Zone _____ NAD27 NAD83
 NAD83 Epoch _____
 Elev. _____
 Vert. Datum: NGVD29 NAVD88
 Meas. Units: Metric Imperial

Corner - Left as found Found & tagged Established Reestablished Rebuilt

Identification and type of corner found: Evidence used to identify or procedure used to establish or reestablish the corner:

RESET BY INTERSECTION AFTER PAVING

A description of the physical condition of the monument as found and as set or reset: _____

FOUND POINTS IN GOOD CONDITION

SURVEYOR'S STATEMENT

This Corner Record was prepared by me or under my direction in conformance
with the Land Surveyors' Act on FEBRUARY 2, 2017

Signed David L. Lindell P.L.S. or R.C.E. No. LS 4016



COUNTY SURVEYOR'S STATEMENT

This Corner Record was received _____

and examined and filed _____

Signed _____ P.L.S. or R.C.E. No. _____

Title: _____

County Surveyor's Comment _____