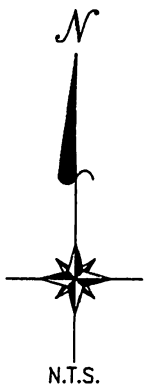
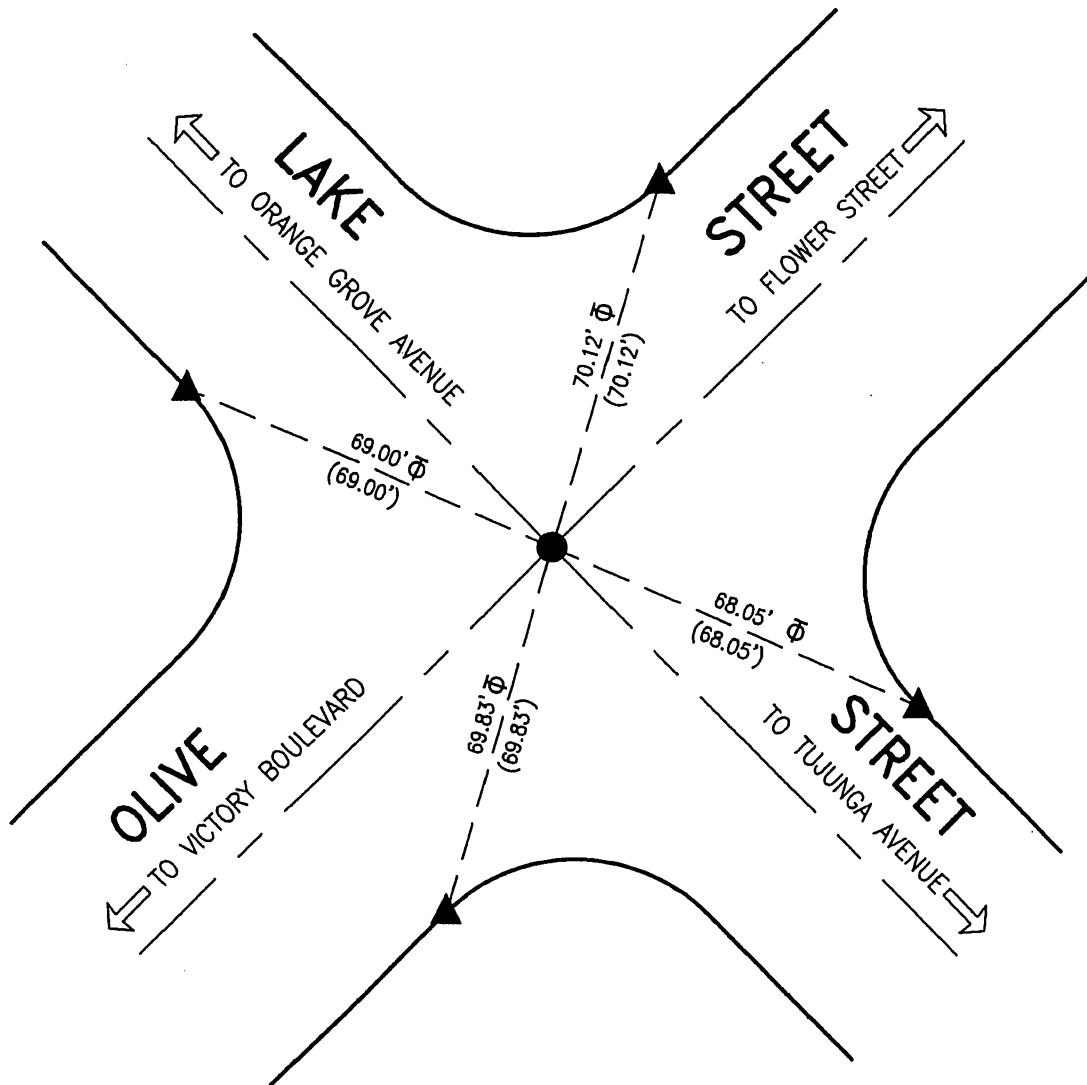


FB 339 P.331



● FOUND GEAR SPIKE W/ WASHER "LS 5748", PER R1, FLUSH.

▲ FOUND LEAD, TACK, & TAG "LS 4016" WITH CHISELED "T", PER R1, FLUSH ON CURB.

ϕ INDICATES TANGENT TIE.

R1= PWFB 1719/1436-1437

POST-CONSTRUCTION

THE PURPOSE OF THE RECORD IS TO DOCUMENT THE PERPETUATION OF FOUND MONUMENT(S) PURSUANT TO THE PLS ACT SECTION 8771. NO CLAIM IS MADE AS TO THE CORRECTNESS OF THE POSITION(S) OF SAID MONUMENT(S), NOR THE DIMENSIONAL RELATIONSHIP TO STREET CENTERLINES OR PROPERTY BOUNDARIES

CORNER RECORD

PWFB 1719

1482

Document Number _____

City of BURBANK

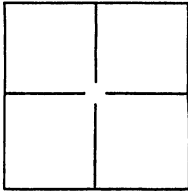
County of LOS ANGELES, California

Brief Legal Description THE INTERSECTION OF LAKE STREET AND OLIVE STREET.

CORNER TYPE

COORDINATES(Optional)

1305
22949



Government Corner Control
 Meander Property
 Rancho Other

N. _____
 E. _____
 Zone _____ NAD27 NAD83
 NAD83 Epoch _____
 Elevation _____
 Vert. Datum: NGVD29 NAV88
 Meas. Units: Metric Imperial

Date of Survey SEPTEMBER 16, 2016

Corner - Left as found Found and tagged Established Reestablished Rebuilt

Identification and type of corner found: Evidence used to identify or procedure used to establish or reestablish the corner:
LOCATED EXISTING SURVEY MONUMENT PRIOR TO CONSTRUCTION AND TIED OUT.

A description of the physical condition of the monument as found and as set or reset: _____
SEE SHEET 2 OF 2

SURVEYOR'S STATEMENT

This Corner Record was prepared by me or under my direction in conformance with
 the Land Surveyors Act on SEPTEMBER 22, 2016

Signed *John E. Lieser* P.L.S. or R.C.E. Number 3983



COUNTY SURVEYOR'S STATEMENT

This Corner Record was received 9/26/2016 and examined
 and filed NOV 28 2016

Signed *Curt M. O'Bryan* P.L.S. or R.C.E. Number 6388

Title DEPUTY COUNTY SURVEYOR

County Surveyor's Comment _____

