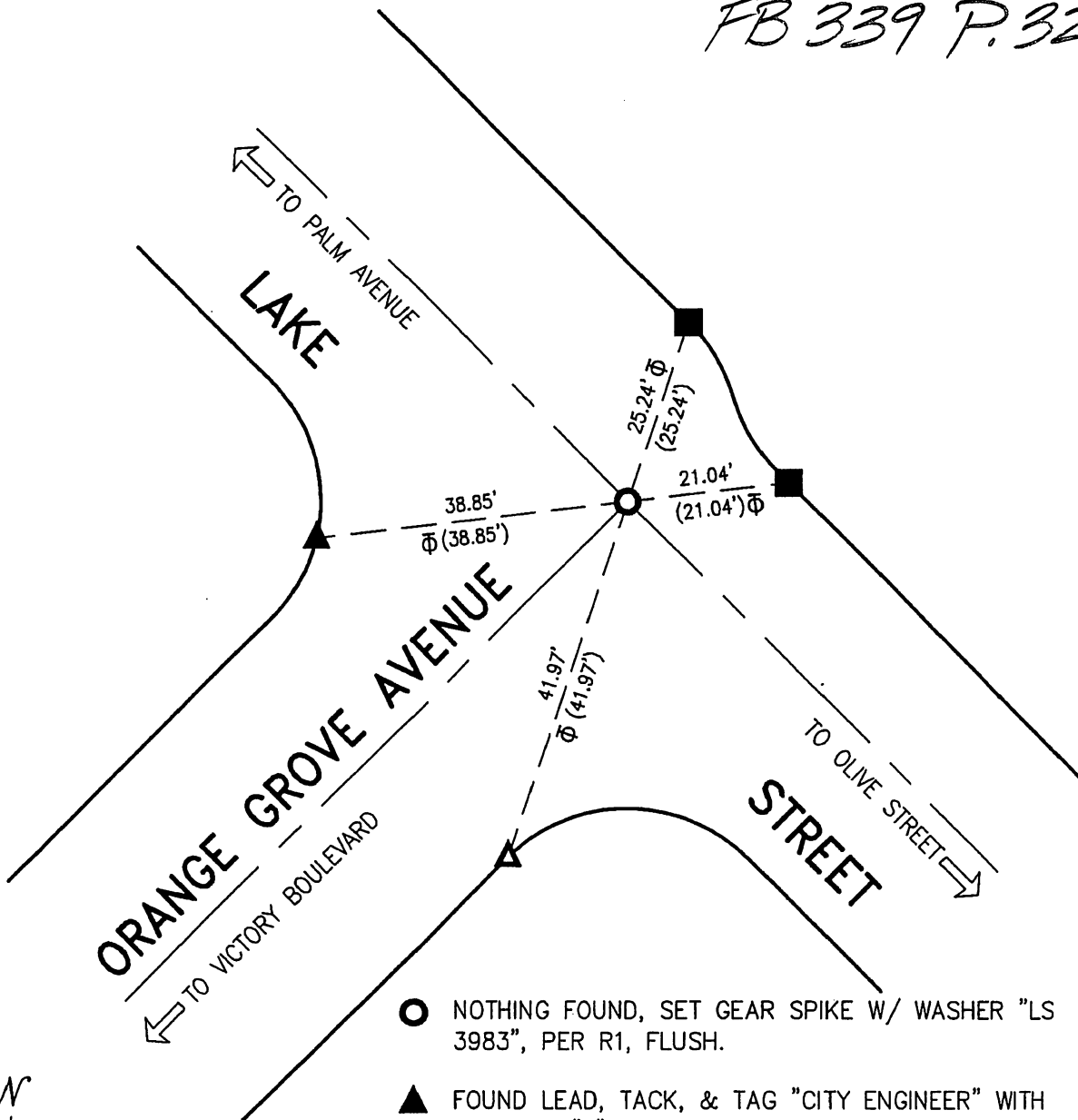
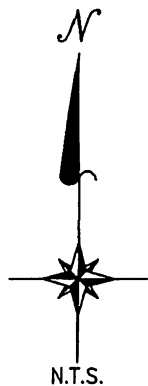


FB 339 P. 329



- NOTHING FOUND, SET GEAR SPIKE W/ WASHER "LS 3983", PER R1, FLUSH.
- ▲ FOUND LEAD, TACK, & TAG "CITY ENGINEER" WITH CHISELED "T", PER R1, FLUSH ON CURB.
- FOUND LEAD, TACK, & TAG "LS 7038" WITH CHISELED "T", PER R1, FLUSH ON CURB.
- ▲ SET LEAD, TACK, & TAG "LS 3983", PER R1, FLUSH.
- $\Phi$  INDICATES TANGENT TIE.

R1= PWFB 1719/1434-1435.



POST-CONSTRUCTION

THE PURPOSE OF THE RECORD IS TO DOCUMENT THE PERPETUATION OF FOUND MONUMENT(S) PURSUANT TO THE PLS ACT SECTION 8771. NO CLAIM IS MADE AS TO THE CORRECTNESS OF THE POSITION(S) OF SAID MONUMENT(S), NOR THE DIMENSIONAL RELATIONSHIP TO STREET CENTERLINES OR PROPERTY BOUNDARIES

# CORNER RECORD

PWFB 1719

1480

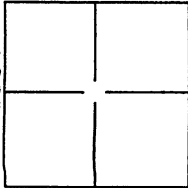
Document Number \_\_\_\_\_

City of BURBANK

County of LOS ANGELES, California

Brief Legal Description THE INTERSECTION OF LAKE STREET AND ORANGE GROVE AVENUE.

1307  
22951



### CORNER TYPE

Government Corner  Control   
 Meander  Property   
 Rancho  Other

Date of Survey SEPTEMBER 16, 2016

### COORDINATES(Optional)

N. \_\_\_\_\_  
 E. \_\_\_\_\_  
 Zone \_\_\_\_\_ NAD27  NAD83   
 NAD83 Epoch \_\_\_\_\_  
 Elevation \_\_\_\_\_  
 Vert. Datum: NGVD29  NAV88   
 Meas. Units: Metric  Imperial

Corner - Left as found  Found and tagged  Established  Reestablished  Rebuilt

Identification and type of corner found: Evidence used to identify or procedure used to establish or reestablish the corner:

LOCATED EXISTING SURVEY MONUMENT PRIOR TO CONSTRUCTION AND TIED OUT.

A description of the physical condition of the monument as found and as set or reset: \_\_\_\_\_

SEE SHEET 2 OF 2

### SURVEYOR'S STATEMENT

This Corner Record was prepared by me or under my direction in conformance with  
 the Land Surveyor's Act on SEPTEMBER 22, 2016.

Signed John E. Lieser P.L.S. or R.G.E. Number 3983



### COUNTY SURVEYOR'S STATEMENT

This Corner Record was received 9/26/2016 and examined

and filed NOV 28 2016

Signed Curt M. O'Bryan P.L.S. or R.G.E. Number 6388

Title DEPUTY COUNTY SURVEYOR

County Surveyor's Comment \_\_\_\_\_

