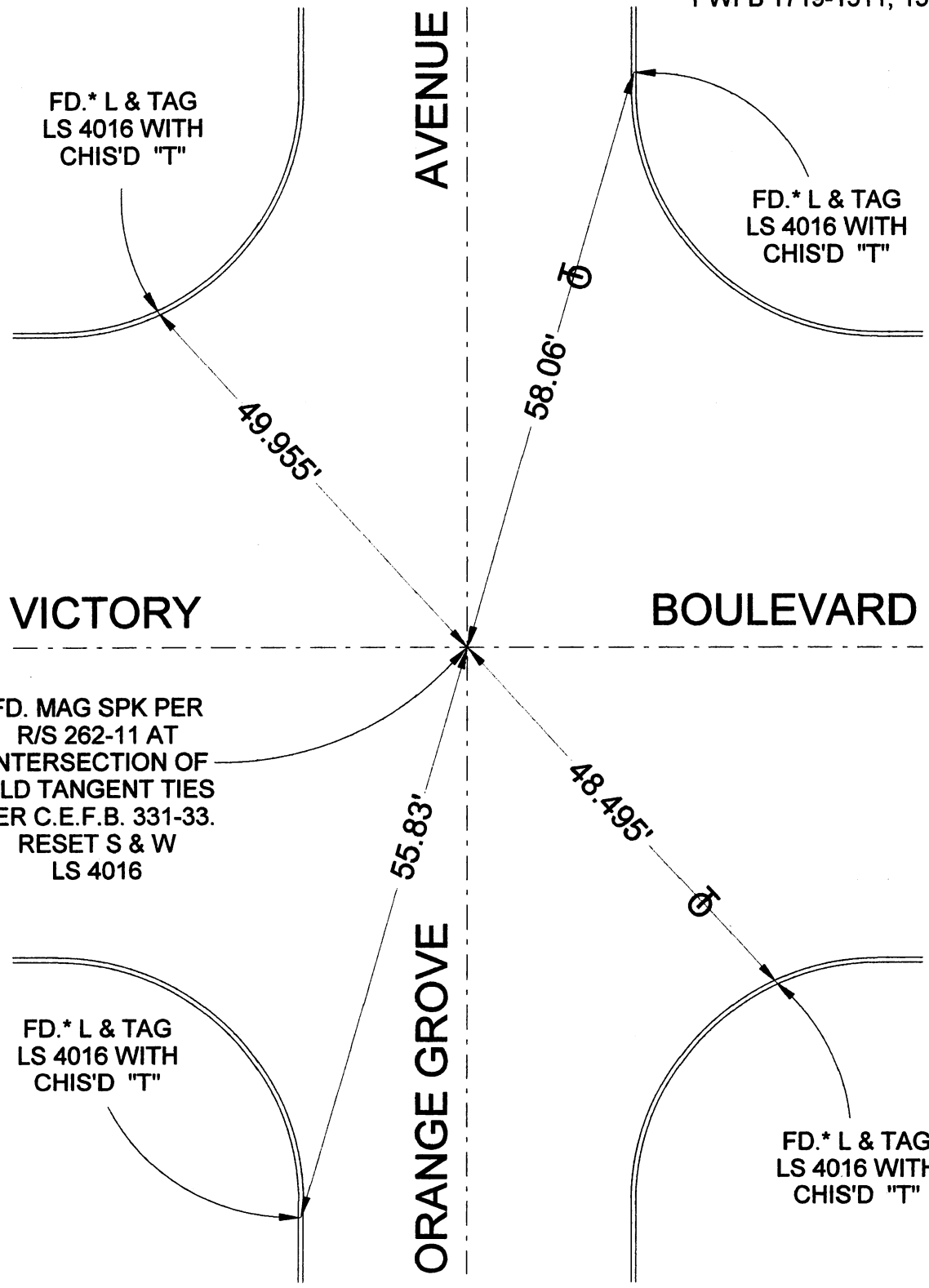


*FD. POINTS PER
PWFB 1719-1511, 1512

FD.* L & TAG
LS 4016 WITH
CHIS'D "T"

FD.* L & TAG
LS 4016 WITH
CHIS'D "T"



VICTORY

BOULEVARD

FD. MAG SPK PER
R/S 262-11 AT
INTERSECTION OF
OLD TANGENT TIES
PER C.E.F.B. 331-33.
RESET S & W
LS 4016

FD.* L & TAG
LS 4016 WITH
CHIS'D "T"

FD.* L & TAG
LS 4016 WITH
CHIS'D "T"

ORANGE GROVE

ORANGE GROVE

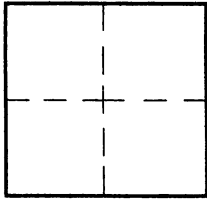
CORNER RECORD

Document Number _____

City of BURBANK

County of Los Angeles, California

Brief Legal Description VICTORY BOULEVARD & ORANGE GROVE AVENUE



CORNER TYPE

Govt. Corner Control
 Meander Property
 Rancho Other
 Date of Survey 11/22/16

COORDINATES (Optional)

N. _____
 E. _____
 Zone _____ NAD27 NAD83
 NAD83 Epoch _____
 Elev. _____
 Vert. Datum: NGVD29 NAVD88
 Meas. Units: Metric Imperial

Corner - Left as found Found & tagged Established Reestablished Rebuilt

Identification and type of corner found: Evidence used to identify or procedure used to establish or reestablish the corner:

RESET BY PRE-CONSTRUCTION TIES PWFB 1719-1511, 1512

A description of the physical condition of the monument as found and as set or reset: _____

FOUND AND SET POINT(S) AS NOTED IN GOOD CONDITION

SURVEYOR'S STATEMENT

This Corner Record was prepared by me or under my direction in conformance
 with the Land Surveyors' Act on DECEMBER 22, 2016

Signed David L. Lindell P.L.S. or R.C.E. No. LS 4016



COUNTY SURVEYOR'S STATEMENT

This Corner Record was received _____

and examined and filed _____

Signed _____ P.L.S. or R.C.E. No. _____

Title: _____

County Surveyor's Comment _____