

CORNER RECORD PWFB 1718

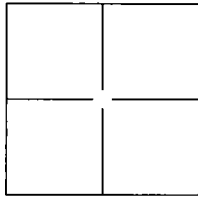
1759

Document Number

City of BURBANK

County of LOS ANGELES, California

Brief Legal Description PRE AND POST CONSTRUCTION TIES FOR SCREENLAND DRIVE & JEFFRIES AVENUE



CORNER TYPE

- Government Corner Control
- Meander Property
- Rancho Other

Date of Survey 12/12/2013

COORDINATES(Optional)

N. _____
 E. _____
 Zone _____ NAD27 NAD83
 NAD83 Epoch _____
 Elev. _____
 Vert. Datum: NGVD29 NAVD88
 Meas. units: Metric Imperial

Corner - Left as found Found and tagged Established Reestablished Rebuilt

Identification and type of corner found: Evidence used to identify or procedure used to establish or reestablish the corner.
FOUND CENTERLINE INTERSECTION OF SCREENLAND DRIVE & JEFFRIES AVENUE AS SHOWN ON PAGE 2

A description of the physical condition of the monument as found and as set or reset:
CENTERLINE MONUMENT FOUND AS NOTED ON PAGE 2, TIES RESET AS NOTED

SURVEYOR'S STATEMENT

This Corner Record was prepared by me or under my direction in conformance with the Land Surveyor's Act on MAY 12, 2014.

Signed *Matthew W. Busch* (P.L.S.) or R.C.E. No.: 7229

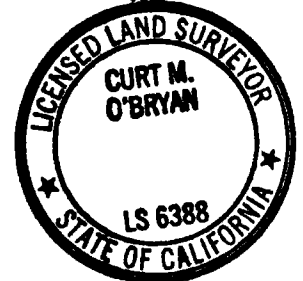


COUNTY SURVEYOR'S STATEMENT

This Corner Record was received JUN 09 2014 and examined and filed JUL 23 2014 AUG 05 2014

Signed *Curt M. O'Bryan* (P.L.S.) or R.C.E. No.: 6388
Title DEPUTY COUNTY SURVEYOR

County Surveyor's Comment _____



Surveyors Notes

R-1 = COUNTY OF LOS ANGELES P.W.F.B. 1718/1294-1295.

▲ = FD GEAR SPIKE/W TAG STAMPED "LS 5411", PER R-1, FLUSH

● = FD L & T IN T.C. PER R-1, BEFORE CONSTRUCTION, UNLESS OTHERWISE NOTED.

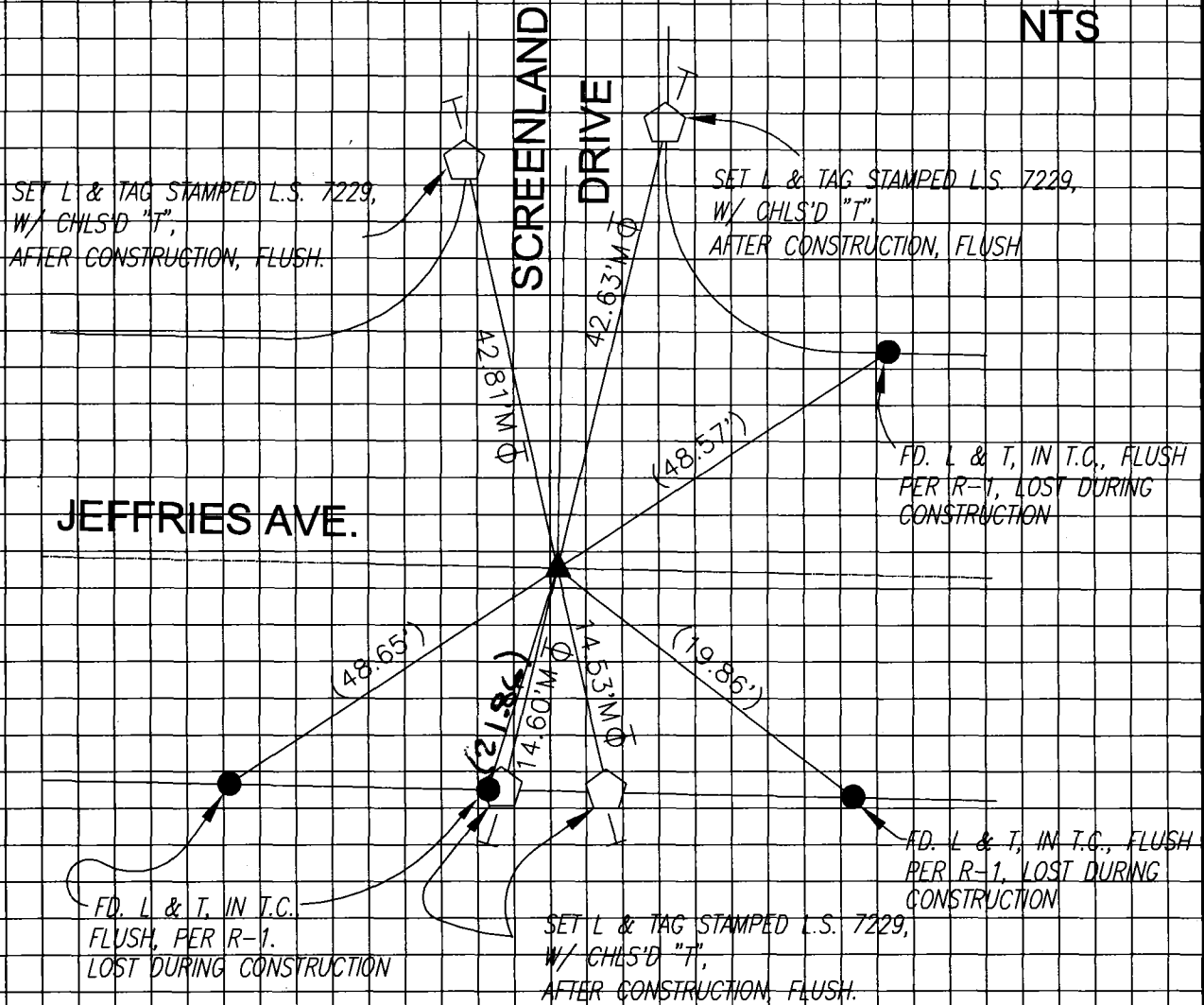
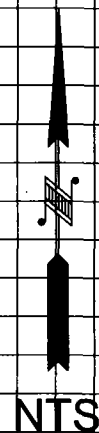
() = RECORD AND MEASURED DISTANCE PER R-1.

⬠ = SET L & TAG STAMPED L.S. 7229, W/ CHLS'D "T", AFTER CONSTRUCTION.

⊕ = TRANSIT LINE TIES.

T = SET CHLS'D "T".

M = MEASURED DISTANCE POST CONSTRUCTION.



NOTE: THESE TIES ARE FOR THE PURPOSE OF PERPETUATING THE FOUND MONUMENTATION. NO CLAIM IS MADE AS TO THE RELATIONSHIP OF THE FOUND POINTS OR LINES SHOWN HEREON TO TRUE BOUNDARY LOCATIONS.