

SET L & TAG  
LS 4016 WITH  
CHIS'D 'T'

FD. L & T PER  
CEFB 265-39

CHANDLER  
SOUTH

38.315'

31.90'

LOMITA

STREET

RESET BY TIES  
INTERSECTION  
FALLS ON SMH LID

37.26'

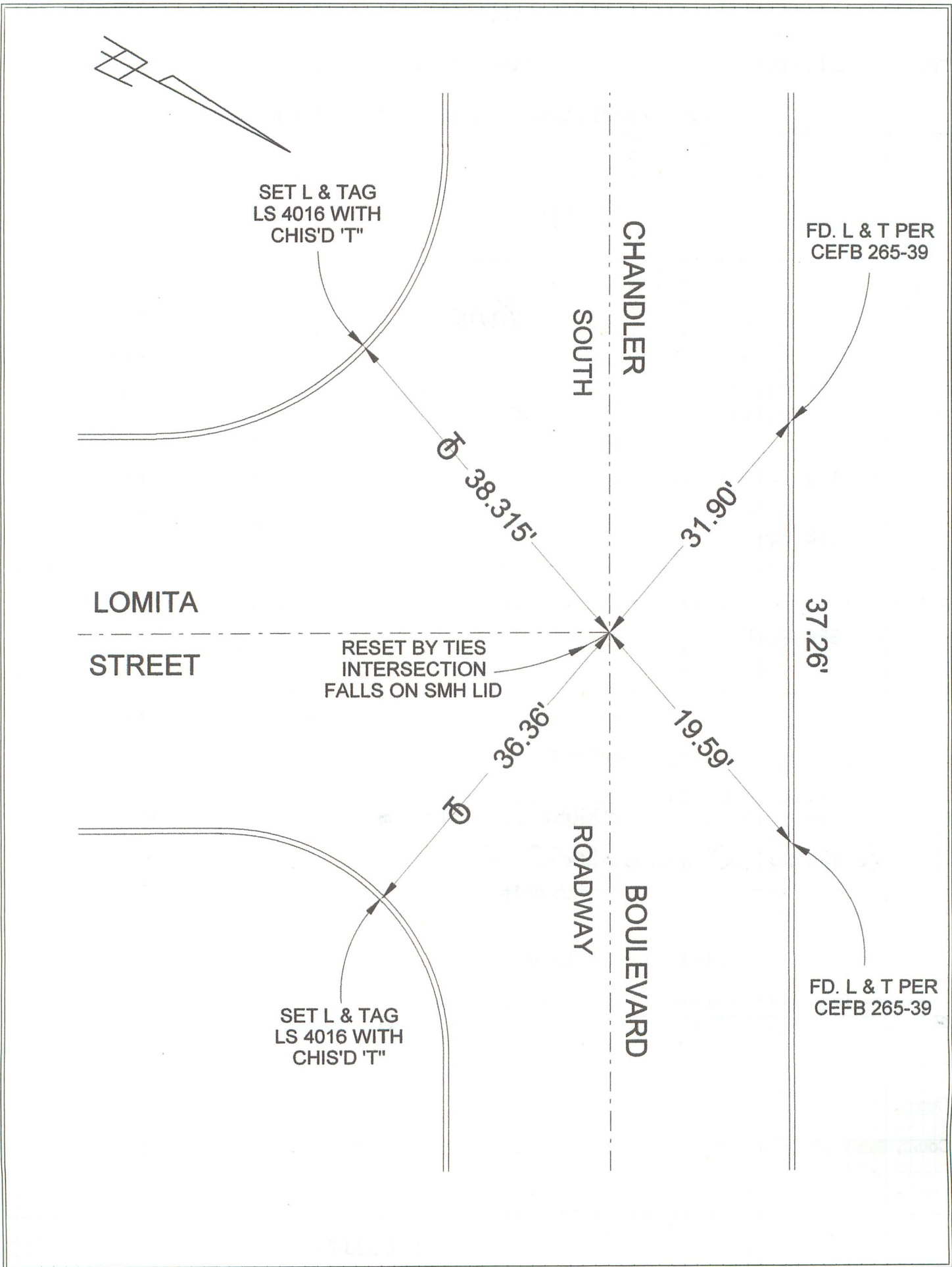
36.36'

19.59'

ROADWAY  
BOULEVARD

SET L & TAG  
LS 4016 WITH  
CHIS'D 'T'

FD. L & T PER  
CEFB 265-39



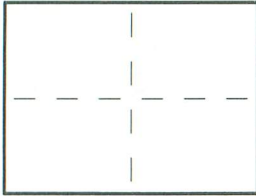
# CORNER RECORD

INDEX \_\_\_\_\_ PAGE \_\_\_\_\_

City of BURBANK

County of Los Angeles, California

Brief Legal Description: CHANDLER BOULEVARD (SOUTH RDWY) & LOMITA STREET



### CORNER TYPE

### COORDINATES (optional)

- Govt. Corner
- Meander
- Rancho
- Date of Survey: 7/16/15
- Control
- Property
- Other

N. \_\_\_\_\_  
 E. \_\_\_\_\_  
 Zone \_\_\_\_\_ Datum \_\_\_\_\_  
 Elev. \_\_\_\_\_

- Corner —  Left as Found  Found & Tagged  Established  
 Reestablished  Rebuilt

**Identification & Type of Corner Found:** Evidence used to identify or procedure used to establish or reestablish the corner.

SEE PLAT

A Description of the Physical Condition of the Monument as Found and as Set or Reset: \_\_\_\_\_

SEE PLAT

### Surveyor's Statement

This Corner Record was Prepared by Me or Under My Direction in Conformance with the Land Surveyors Act on AUGUST 4, 2015

Signed: David L. Lindell

L.S. or R.C.E. No.: LS 4016



### County Surveyor's Statement

This Corner Record was Received \_\_\_\_\_ and Examined and Filed \_\_\_\_\_

Signed: \_\_\_\_\_

Title: \_\_\_\_\_

County Surveyor's Comment: \_\_\_\_\_