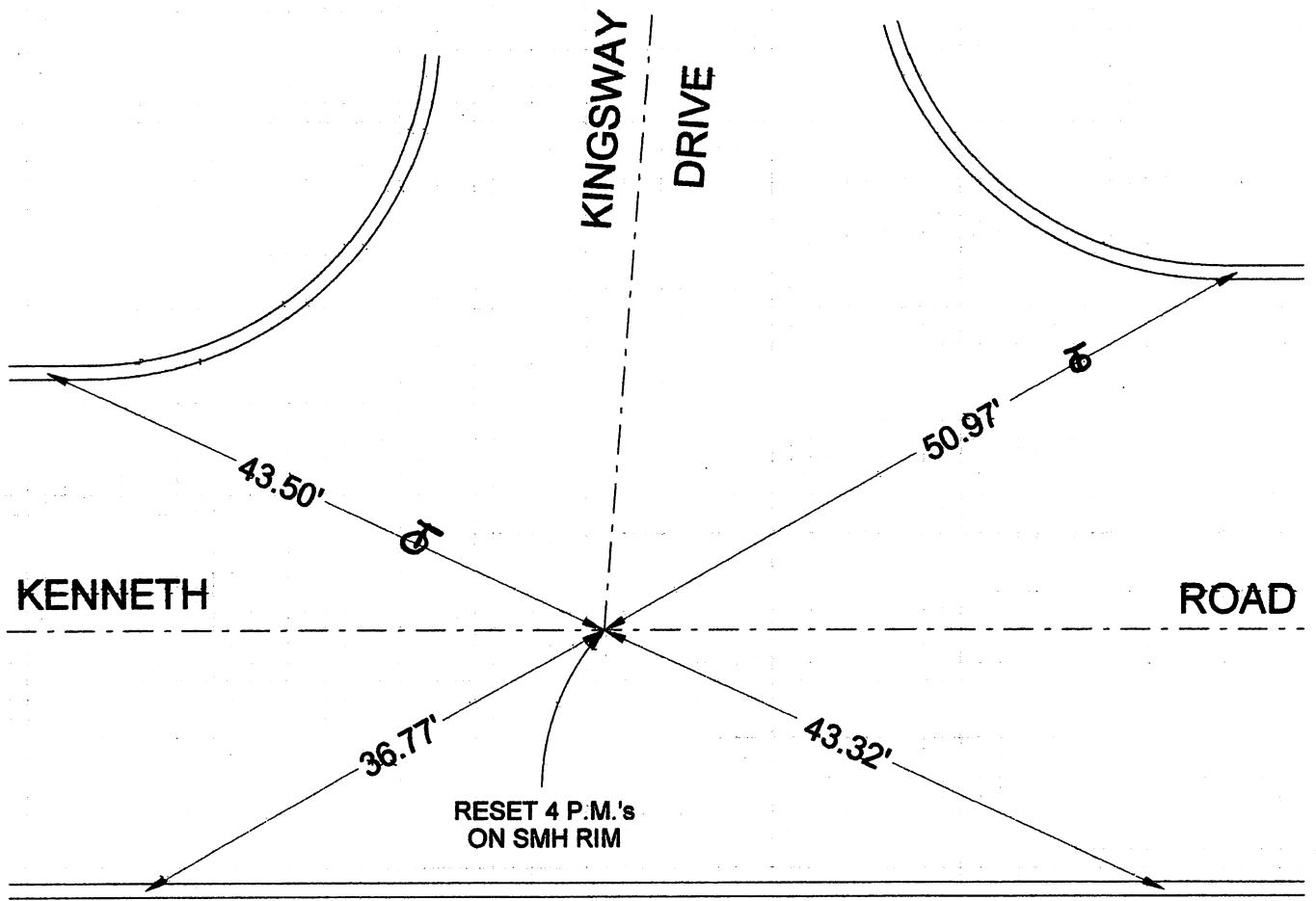


ALL TIES L&T'S IN CURB
PER CEFB 187-51 UNLESS
OTHERWISE NOTED



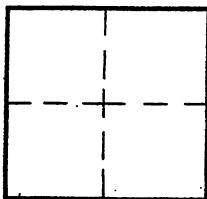
CORNER RECORD

Document Number _____

City of BURBANK

County of Los Angeles, California

Brief Legal Description KENNETH ROAD & KINGSWAY DRIVE



CORNER TYPE

COORDINATES (Optional)

Govt. Corner Control
 Meander Property
 Rancho Other
 Date of Survey 7/05/16

N. _____
 E. _____
 Zone _____ NAD27 NAD83
 NAD83 Epoch _____
 Elev. _____
 Vert. Datum: NGVD29 NAVD88
 Meas. Units: Metric Imperial

Corner - Left as found Found & tagged Established Reestablished Rebuilt

Identification and type of corner found: Evidence used to identify or procedure used to establish or reestablish the corner:
TIED OUT AS FOUND BEFORE CONSTRUCTION

A description of the physical condition of the monument as found and as set or reset: _____

ALL FOUND TIES IN GOOD CONDITION

SURVEYOR'S STATEMENT

This Corner Record was prepared by me or under my direction in conformance

with the Land Surveyors' Act on _____

JULY 15, 2016

Signed _____

David L. Lindell

P.L.S. or R.C.E. No. _____

LS 4016



COUNTY SURVEYOR'S STATEMENT

This Corner Record was received _____

and examined and filed _____

Signed _____

P.L.S. or R.C.E. No. _____

Title: _____

County Surveyor's Comment _____