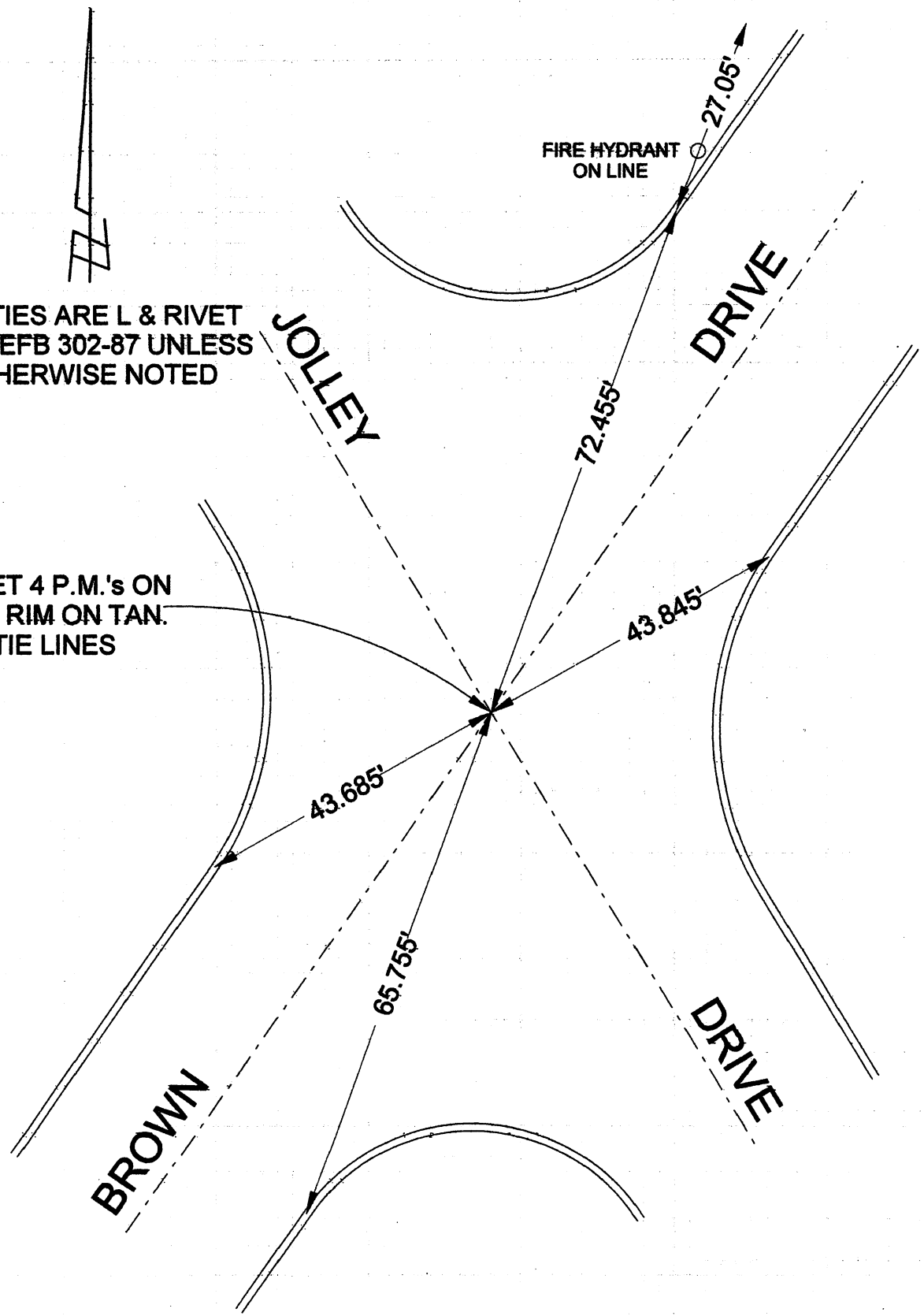


ALL TIES ARE L & RIVET
PER CEFB 302-87 UNLESS
OTHERWISE NOTED

RESET 4 P.M.'s ON
SMH RIM ON TAN.
TIE LINES



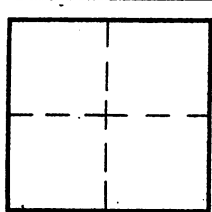
CORNER RECORD

Document Number _____

City of BURBANK

County of Los Angeles, California

Brief Legal Description JOLLEY DRIVE & BROWN DRIVE



CORNER TYPE

Govt. Corner Control
 Meander Property
 Rancho Other
 Date of Survey 7/05/16

COORDINATES (Optional)

N. _____
 E. _____
 Zone _____ NAD27 NAD83
 NAD83 Epoch _____
 Elev. _____
 Vert. Datum: NGVD29 NAVD88
 Meas. Units: Metric Imperial

Corner - Left as found Found & tagged Established Reestablished Rebuilt

Identification and type of corner found: Evidence used to identify or procedure used to establish or reestablish the corner:
TIED OUT AS FOUND BEFORE CONSTRUCTION

A description of the physical condition of the monument as found and as set or reset: _____

ALL FOUND TIES IN GOOD CONDITION

SURVEYOR'S STATEMENT

This Corner Record was prepared by me or under my direction in conformance

JULY 15, 2016

with the Land Surveyors' Act on _____

Signed David L Lindell P.L.S. or R.C.E. No. LS 4016



COUNTY SURVEYOR'S STATEMENT

This Corner Record was received _____

and examined and filed _____

Signed _____ P.L.S. or R.C.E. No. _____

Title: _____

County Surveyor's Comment _____