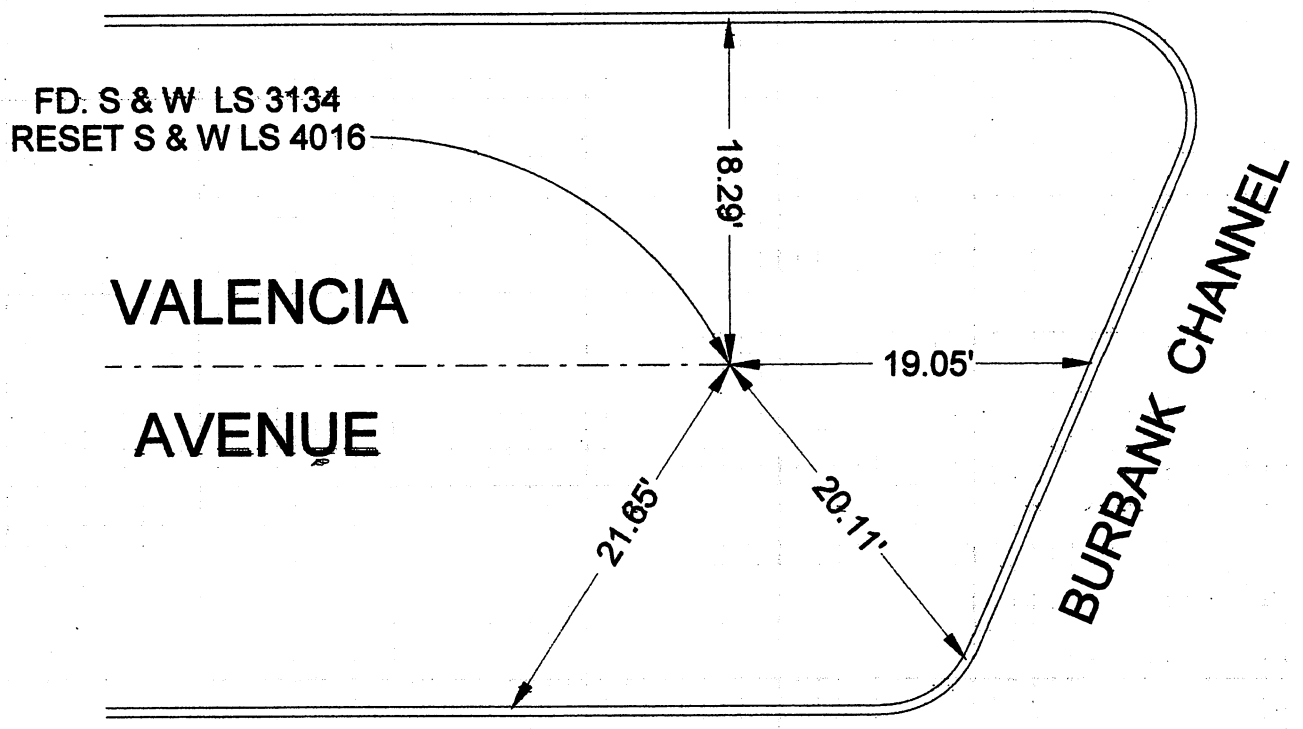


ALL TIES ARE L & TAG 3134  
PER PWFB 1719-181



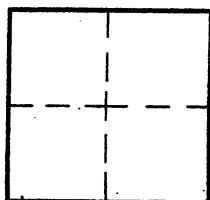
# CORNER RECORD

City of BURBANK

Document Number \_\_\_\_\_

County of Los Angeles, California

Brief Legal Description VALENCIA AVENUE NE/O VICTORY BLVD. (AT CHANNEL)



### CORNER TYPE

Govt. Corner  Control   
 Meander  Property   
 Rancho  Other   
 Date of Survey 7/13/16

### COORDINATES (Optional)

N. \_\_\_\_\_  
 E. \_\_\_\_\_  
 Zone \_\_\_\_\_ NAD27  NAD83   
 NAD83 Epoch \_\_\_\_\_  
 Elev. \_\_\_\_\_  
 Vert. Datum: NGVD29  NAVD88   
 Meas. Units: Metric  Imperial

Corner - Left as found  Found & tagged  Established  Reestablished  Rebuilt

Identification and type of corner found: Evidence used to identify or procedure used to establish or reestablish the corner:  
TIED OUT AS FOUND BEFORE CONSTRUCTION

A description of the physical condition of the monument as found and as set or reset: \_\_\_\_\_

ALL FOUND TIES IN GOOD CONDITION

### SURVEYOR'S STATEMENT

This Corner Record was prepared by me or under my direction in conformance

JULY 15, 2016

with the Land Surveyors' Act on \_\_\_\_\_

Signed David L. Lindell P.L.S. or R.C.E. No. LS 4016



### COUNTY SURVEYOR'S STATEMENT

This Corner Record was received \_\_\_\_\_

and examined and filed \_\_\_\_\_

Signed \_\_\_\_\_ P.L.S. or R.C.E. No. \_\_\_\_\_

Title: \_\_\_\_\_

County Surveyor's Comment \_\_\_\_\_