

# SPAZIER AVENUE

FD. L&TAG  
LS 3134 PER  
PWFB 1719-180

SET L&TAG  
LS 4016

FD. CoSURV  
MON. IN WELL

NOTHING FOUND ESTABLISHED BY  
2 REMAINING TIES, RESET S & W  
LS 4016

FD. L&TAG  
LS 3134 PER  
PWFB 1719-180

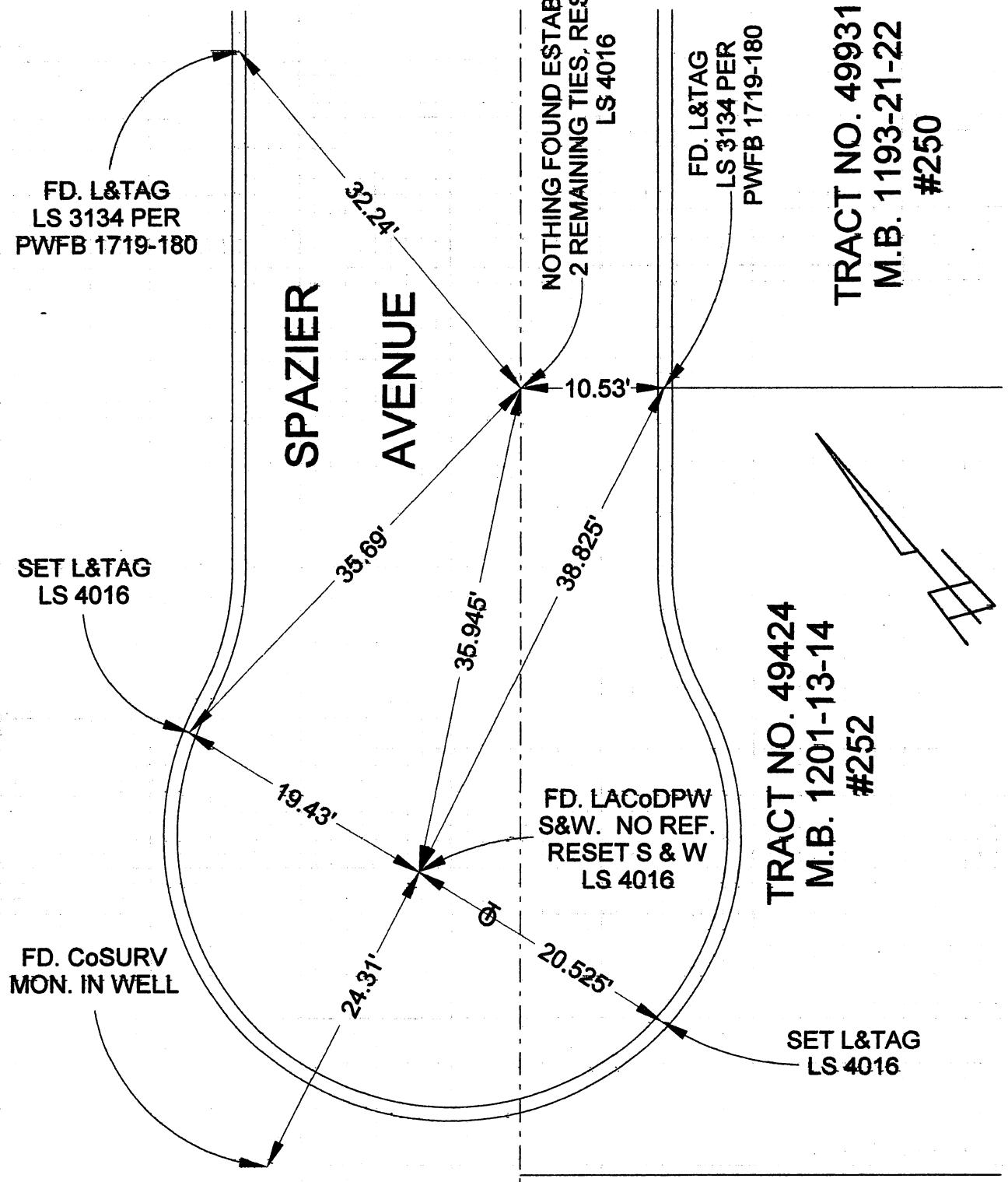
TRACT NO. 49931  
M.B. 1193-21-22  
#250

TRACT NO. 49424  
M.B. 1201-13-14  
#252

FD. LACoDPW  
S&W. NO REF.  
RESET S & W  
LS 4016

SET L&TAG  
LS 4016

# BURBANK WESTERN CHANNEL



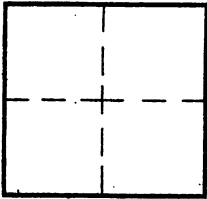
# CORNER RECORD

City of BURBANK

Document Number \_\_\_\_\_

County of Los Angeles, California

Brief Legal Description SPAZIER AVENUE SW/O LAKE STREET



### CORNER TYPE

Govt. Corner  Control   
 Meander  Property   
 Rancho  Other   
 Date of Survey 7/13/16

### COORDINATES (Optional)

N. \_\_\_\_\_  
 E. \_\_\_\_\_  
 Zone \_\_\_\_\_ NAD27  NAD83   
 NAD83 Epoch \_\_\_\_\_  
 Elev. \_\_\_\_\_  
 Vert. Datum: NGVD29  NAVD88   
 Meas. Units: Metric  Imperial

Corner - Left as found  Found & tagged  Established  Reestablished  Rebuilt

Identification and type of corner found: Evidence used to identify or procedure used to establish or reestablish the corner:  
TIED OUT AS FOUND BEFORE CONSTRUCTION

A description of the physical condition of the monument as found and as set or reset: \_\_\_\_\_

ALL FOUND TIES IN GOOD CONDITION

### SURVEYOR'S STATEMENT

This Corner Record was prepared by me or under my direction in conformance

with the Land Surveyors' Act on JULY 15, 2016

Signed David L. Lindell P.L.S. or R.C.E. No. LS 4016



### COUNTY SURVEYOR'S STATEMENT

This Corner Record was received \_\_\_\_\_

and examined and filed \_\_\_\_\_

Signed \_\_\_\_\_ P.L.S. or R.C.E. No. \_\_\_\_\_

Title: \_\_\_\_\_

County Surveyor's Comment \_\_\_\_\_